

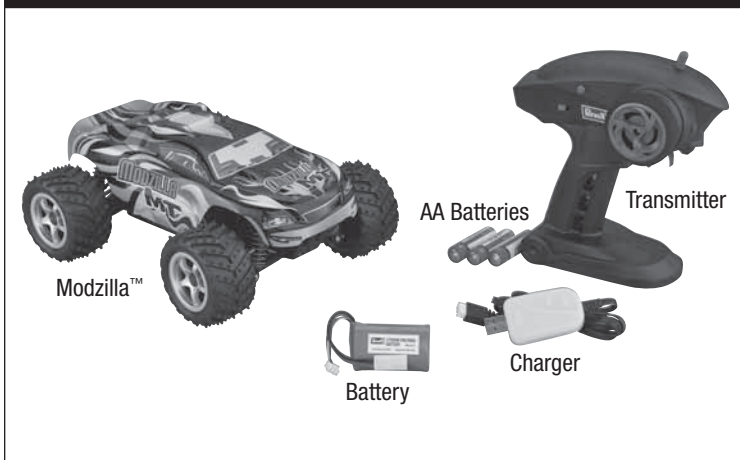
MODZILLA MT

Radio Controlled Truck



Revell Control

Contents



FCC REQUIREMENT

This device complies with part 15 of the FCC rules. Operation is subject to the following two conditions.

- (1) This device may not cause harmful interference.
- (2) This device must accept any interference received, including interference that may cause undesired operation.

NOTE: THE MANUFACTURER IS NOT RESPONSIBLE FOR ANY RADIO OR TV INTERFERENCE CAUSED BY UNAUTHORIZED MODIFICATIONS TO THIS EQUIPMENT.

Any changes or modifications not expressly approved by the party responsible for compliance could void the user's authority to operate the equipment.

This equipment complies with FCC radiation exposure limits set forth for an uncontrolled environment.

This equipment should be installed and operated with a minimum distance of 20cm between the radiator (transmitter) and your body.

This transmitter must not be co-located or operating in conjunction with any other antenna or transmitter.

Safety Precautions:

Warning: Do not modify or alter this unit. Changes or modifications to this unit not expressly approved by the party responsible for compliance could void the user's authority to operate the equipment.

- This vehicle is suitable for indoor or outdoor use in dry conditions.
- The vehicle is suitable for ages 14 and above. Parents should supervise children who operate the vehicle.
- Remove batteries from the transmitter when not in use.
- Switch off the vehicle and disconnect the battery when it is not in use.
- Keep hands, face and loose clothing away from the vehicle.
- Keep these instructions for future reference.
- Always keep an eye on the vehicle. Careless or irresponsible use may cause damage.
- Always follow these instructions when operating this vehicle.
- Do not operate near people, animals or water.

Battery Requirements for Transmitter:

3 x 1.5V AA size batteries (included)

Care and Maintenance:

- Regularly examine all parts for damage. If any is found, do not use again until the damage has been repaired.
- Use a clean cloth to wipe the vehicle clean.
- Keep the vehicle and batteries away from direct sunlight and/or heat sources.

Battery Cautions:

- Parental guidance is recommended when installing or replacing batteries.
- For best performance, use new alkaline batteries in transmitter.
- Insert new batteries in the transmitter as soon as any function becomes diminished.
- Do not power transmitter by mixing different types of batteries, or old and new batteries.

- Use only batteries of the same or equivalent type as those recommended.

The vehicle is equipped with a LiPo battery. Always follow these safety instructions:

- ALWAYS disconnect the battery from the vehicle when not in use.
- Only use the included charger.
- Do not attempt to use this charger with NiCd or NiMH battery packs.
- Do not attempt to use a damaged battery.
- LiPo batteries must be recycled or disposed of properly.
- Do not leave the charger unattended while charging. Disconnect the battery and unplug the charger immediately if either becomes hot! However, it is normal for the charger to get warm.
- Disconnect the battery from the charger and carefully move the battery to a fireproof location if the battery

begins to swell or smoke!

- Never allow the battery temperature to exceed 140° F [60° C].
- Do not attempt to charge a battery if it is swollen or hot.
- Do not place the charger or any battery on a flammable surface or near combustible materials while in use.
- Never disassemble or modify pack wiring in any way or puncture cells.
- Never charge inside a vehicle.
- Always disconnect the battery and remove the charger from the USB port when not in use.
- ALWAYS keep a supply of sand accessible when charging. Dumping sand on the battery will extinguish a LiPo chemical fire.
- ALWAYS KEEP OUT OF REACH OF CHILDREN

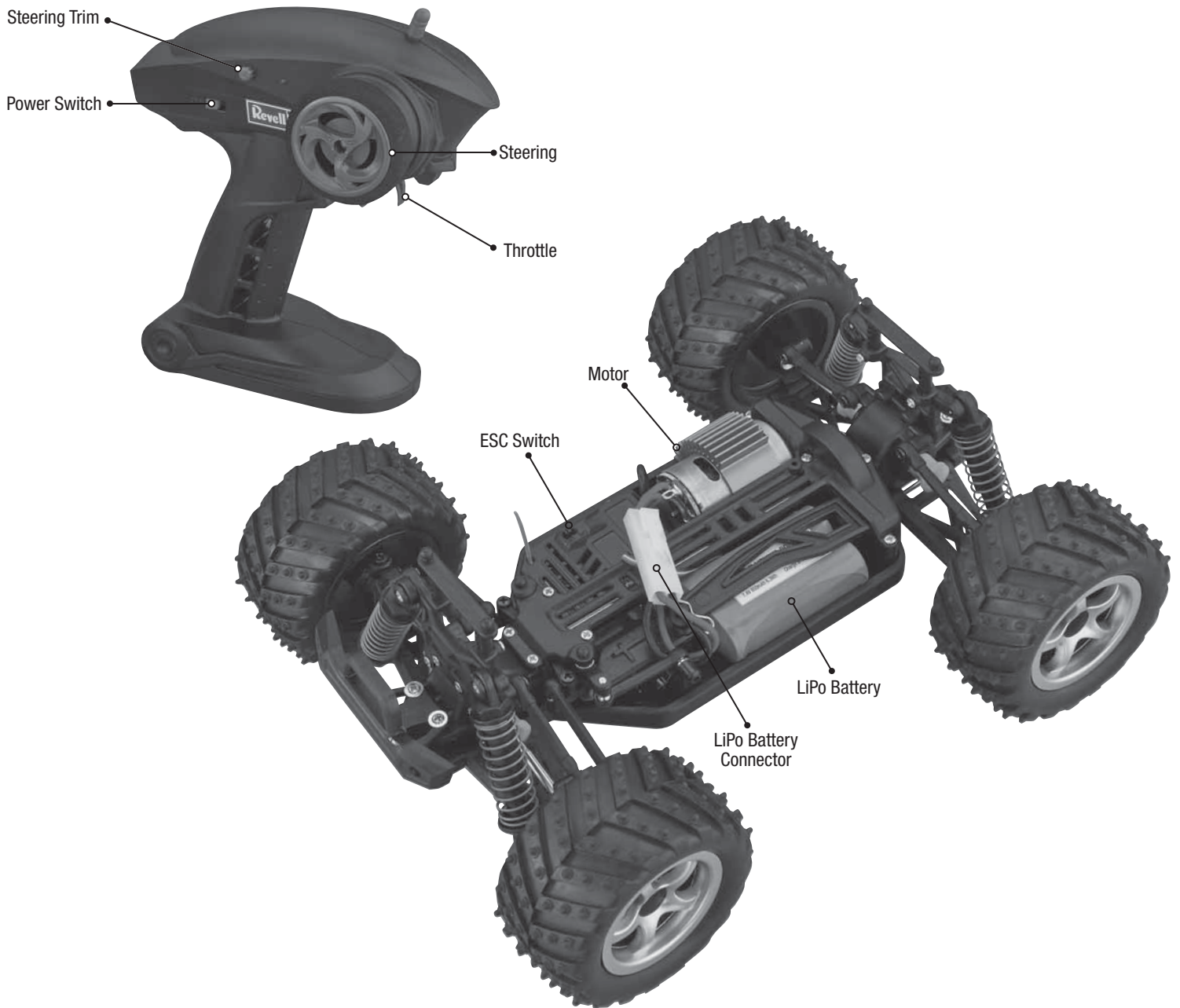
90 DAY LIMITED WARRANTY

PLEASE DO NOT RETURN YOUR PRODUCT TO THE STORE – Revell will repair or replace factory defects for 90 days from the date of purchase. This warranty specifically does not cover crash damage, misuse or abuse. To make a warranty claim, please contact our product support team at 1-217-398-8970 or e-mail us at productsupport@hobbico.com.

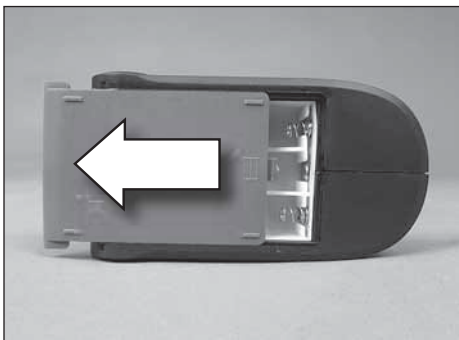
If requested by Product Support, please send defective product to: Hobby Services, 3002 N Apollo Dr., Suite #1, Champaign, IL 61822.

This warranty applies only if the product is operated in compliance with the instructions and warnings provided with each model. Revell assumes no liability except for the exclusive remedy or repair of parts as specified above. Revell shall not be liable for consequential or incidental damages. Some states do not allow the exclusion of consequential or incidental damages so the above exclusion may not apply to you. This warranty gives you specific legal rights and you may also have other rights which vary from state to state.

Vehicle and Transmitter Parts



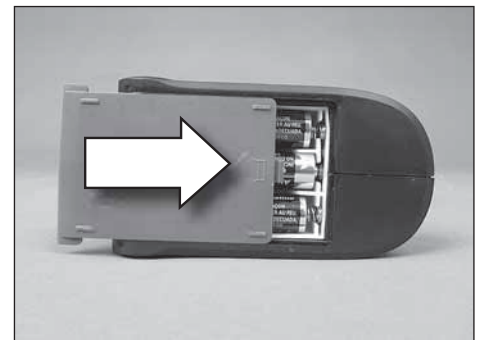
Insert Batteries into the Transmitter



1. Slide the battery cover from the bottom of the transmitter.



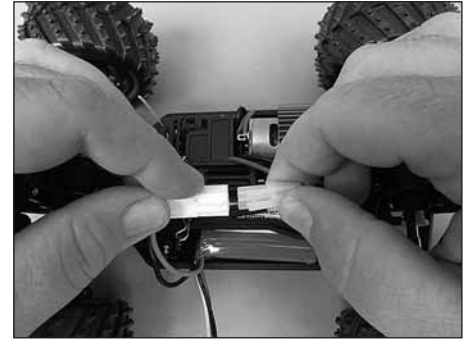
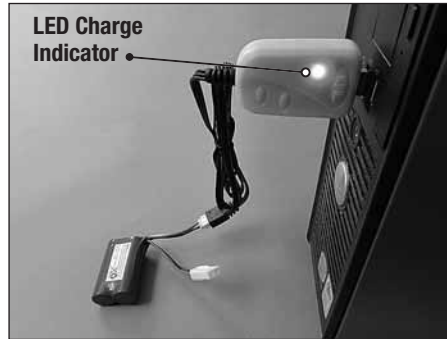
2. Insert (3) 1.5V AA batteries, following the polarity information.



3. Re-install the battery cover.

Charging Procedure

- ATTENTION:**
- Allow the battery to cool off for 10-15 minutes before recharging.
 - Do not leave the battery unattended during the charging process.
 - Charge times will vary depending on how much charge is left in the battery.



1. Switch off the car.
 2. Carefully plug the charger into the USB port on your computer or USB adapter.
 3. Plug the vehicles lipo battery into the charger.
- NOTE: You must plug the charger into the USB port/adapter first before plugging the battery into the charger for the charger to perform properly.**

2. The charging process takes approximately 3.5 hours. For safety reasons, never charge the battery for longer than 4 hours. While charging, the red charger LED will be on. When the battery is finished, the green charger LED will be on.

3. Disconnect the battery from the charger and reconnect the battery to the speed control.

Driving the Vehicle

Getting Started:

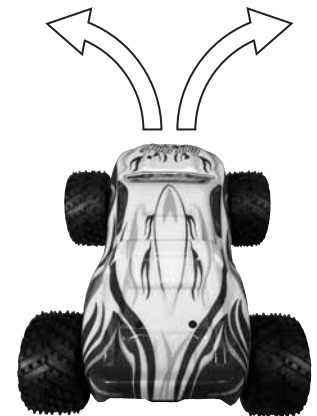


1. Move the ESC switch to the "on" position.
2. Turn the transmitter on, by sliding the power switch to the "on" position. The red LED should illuminate. If the LED does not illuminate check that the batteries are installed correctly in the transmitter and that the batteries are in good condition.
3. When you are finished driving, turn the truck off then the transmitter. Make sure you always unplug the battery from the truck once you are finished running. Failure to disconnect the battery will cause a slow drain on the battery which could cause damage to it.



NOTE: You must turn the vehicle on before the transmitter for the transmitter and receiver to link properly.

Operation:



- To slowly drive forward, pull the trigger slightly. To drive faster, pull the trigger further.
- To brake, push the trigger. To drive in reverse, push again.
- During a crash, release the trigger.

- To turn, rotate the wheel to the left or right.
- Always move the controls slowly and with a gentle touch.

- When the vehicle battery becomes low, the vehicle will roll to a stop. The vehicle is equipped with a LVC (Low Voltage Cutoff) to protect the battery.
- Allow the battery to cool before recharging.

Driving the Vehicle (continued)

Steering Trim:

- If the vehicle pulls right (when viewed from behind), rotate the knob to the left.
- If the vehicle pulls left (when viewed from behind), rotate the knob to the right.

Steering Trim Button



Driving Tips:

- Run the vehicle on a flat surface.
- Watch the vehicle instead of looking at the transmitter.
- Always release the throttle trigger right away following a crash to prevent damaging the electronics.
- The vehicle should be operated in an area that has as much open space as possible with no people or animals nearby.
- Do not operate this vehicle on the street.

Linking Procedure

The Modzilla is equipped with an auto linking feature which allows the transmitter and receiver to automatically link once they are turned on. Make sure to turn the transmitter on before the vehicle.

Troubleshooting

Problem: The wheels won't turn.

Solution: Recharge the battery.

Problem: The transmitter doesn't function.

Solution: Make sure the batteries are inserted correctly.
Insert new batteries.

Problem: The vehicle loses speed or comes to a stop.

Solution: Recharge the battery.

Problem: Transmitter LED flashing slowly (low voltage).

Solution: Replace the transmitter batteries.

Service

If your Modzilla™ requires repairs or replacement, **DO NOT RETURN TO RETAILER.** Contact:

Hobby Services
3002 N. Apollo Drive, Suite 1
Champaign, IL, 61822, U.S.A.
9am-5pm Central Mon.-Fri.
(217) 398-0007
hobbyservices@hobbico.com