

ROOM GUARD ACTIVITY KIT

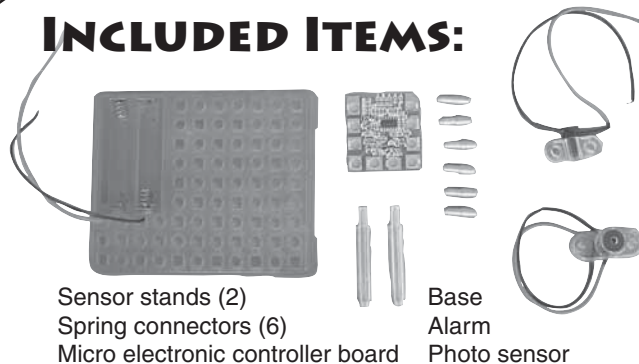
SAFETY WARNINGS:

1. Not suitable for children under 3 years because of small parts.
2. Assembly and use of the product should only be done under direct supervision of an adult.
3. Batteries should be installed and replaced by an adult.
4. Alkaline batteries are recommended for this product.
5. Do not use rechargeable batteries.
6. Do not short circuit the terminals.
7. Batteries may leak or potentially explode if misused.

ASSEMBLY GUIDE:

1. Lay the micro electronic controller board on the base.
2. Install two spring connectors into holes VSS1 and VCC by pressing the smaller end of the spring connector in as far as possible.
3. Install the black wire to the VSS1 spring connector by pushing the spring to the side and inserting the black wire.
4. Install the red wire to the VCC spring connector by pushing the spring to the side and inserting the red wire.
5. Install the sensor stands onto the bottom of the photo sensor.
6. Install the sensor assembly onto the base.
7. Install two spring connectors into holes PHOTO and VSS1 by pressing the smaller end of the spring connector in as far as possible.
8. Install the black wire to the VSS1 spring connector by pushing the spring to the side and inserting the black wire.
9. Install the red wire to the photo spring connector by pushing the spring to the side and inserting the red wire.

INCLUDED ITEMS:



Sensor stands (2)
Spring connectors (6)
Micro electronic controller board

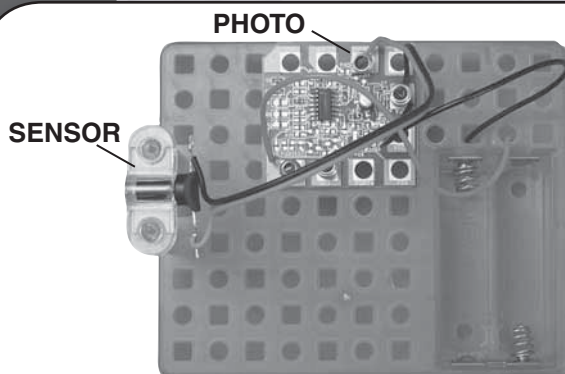
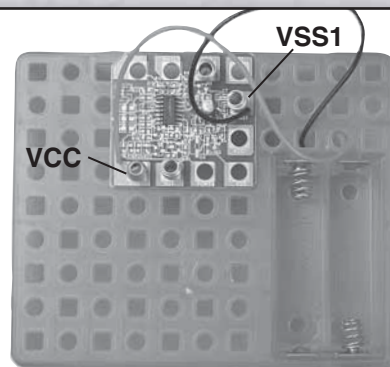
Base
Alarm
Photo sensor

REQUIRED ITEMS:

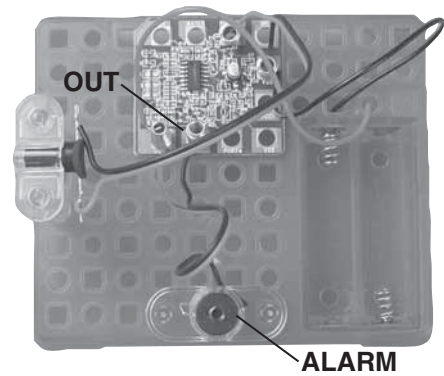
- (2) AA Batteries

SCIENCE FACTS:

The Room Guard is an electronic device that detects visible light, infrared (IR), or ultraviolet (UV) energy. Light sensors are used in a variety of everyday electronic devices such as fiber optic systems, optical scanners, wireless LAN, automatic lighting systems, optical disk drives and remote control devices.



10. Install the alarm onto the base.
11. Install two spring connectors into holes VCC and OUT by pressing the smaller end of the spring connector in as far as possible.
12. Install the black wire to the OUT spring connector by pushing the spring to the side and inserting the black wire.
13. Install the red wire to the VCC spring connector by pushing the spring to the side and inserting the red wire.



OPERATION GUIDE:

1. Install 2 AA size batteries into the holder. This will turn "ON" the circuit.
2. The room guard works by continually sending a signal to the micro controller. When the amount of light entering the sensor changes dramatically, the signal to the micro controller will also change. When the micro controller reads this change, it is programmed to sound the alarm. Due to the electro-optical properties of this room guard, it works best in a bright environment and needs a big change in light in order to trigger the alarm.
3. To use the Room Guard, place the unit on the floor or on a table with the light sensor facing the door. Leave the light outside the room on. Close your door. If the door is opened, the Room Guard will detect the change in light and set off the alarm.

Note: To turn OFF the Room Guard, remove the batteries. Do not leave the batteries installed in the Room Guard when not in use.

