

The crew of the *Hornet* was mystified when sixteen Army B-25 bombers were hoisted aboard. Land-based bombers had never before flown a mission from a carrier deck. Not until they were well underway did they learn the nation's biggest military secret. They were going to bomb Japan.

"MAN YOUR PLANES!"

On April 18, 1942, the klaxon sounded with chilling urgency. The loud-speaker blared: "Army pilots, man your planes!"

Ropes lashing the planes to the deck were unfastened and wheel chocks pulled away. The *Hornet's* speed was increased. Her deck seawarded each time her bow bit into the waves.

The lead plane, piloted by Brig. General Jimmy Doolittle, lunged into the gale that swept down the deck. One by one the other planes followed.

BOOSTED MORALE

No group ever undertook a more dangerous combat mission with less chance of survival. Yet they bombed Tokyo and other targets without a single loss to enemy fire. After the endless toll of defeats in the Pacific, the Doolittle raid gave a tremendous boost to American morale. Above all, it demonstrated Japan's vulnerability to air attack.

This was the first full-scale war action in which the USAAF teamed up with the Navy.

TALENT FOR SURVIVAL

Hornet planes stung Japanese carriers and cruisers and were the first to reach the enemy strike force at Midway. The *Hornet* had a remarkable talent for survival, and continued Japanese victories for a brief time left her the only U.S. fleet carrier in the South Pacific. On October 26, 1942, the *Hornet* became the victim of unrelenting attacks by enemy aircraft. While taking hits from bombers and torpedo planes, she was divebombed by Kamikaze (suicide planes). She was able to shoot down all but two of the twenty-seven planes attacking her.

Later in the day, while under tow, she was hit again and the order was given to abandon ship. Still she did not sink. Destroyers left behind to scuttle her were unable to do so even after firing all their torpedoes and more than 400 shells. Finally they abandoned the fatally wounded *Hornet* to Japanese destroyers who finally sent her down to the depths.

SPECIFICATIONS — U.S.S. HORNET CV-8

Built by Newport News Shipbuilding and Dry Dock Company, Virginia

Launched: December 14, 1940
Commissioned: October 20, 1941
Length: 809'6"
Beam: 83'1"
Displacement: 19,800 tons
Aircraft: 85
Speed: 32-1/2 knots
Complement: 160 officers, 1,729 men

READ THIS BEFORE YOU BEGIN

- Study the assembly drawings.
- Each plastic part is identified by a number.
- Check the fit of each piece before cementing in place.
- Do not use too much cement to join parts.
- Use only cement for polystyrene plastic.
- Model may be painted to match photos on box.
- Allow paint to dry thoroughly before handling parts.
- Scrape paint from areas to be cemented.
- For better paint and decal adhesion, wash the plastic parts in a mild detergent solution. Rinse and let air dry.

LISEZ CE QUI SUIT AVANT DE COMMENCER LE MONTAGE

- Etudier les schémas d'assemblage.

- Chaque pièce plastique porte un numéro d'identification.
- Contrôler que chaque pièce soit bien conforme avant de la coller à sa place.
- N'utilisez pas trop de colle pour réunir les pièces.
- Utilisez uniquement une colle spéciale pour polystyrène.
- Le modèle peut être peint conformément aux photos sur la boîte.
- Laissez sécher la peinture complètement, avant de manipuler les pièces.
- Grattez la peinture sur les surfaces devant être collées.
- Pour assurer la meilleure adhésion possible de la peinture et des décalcomanies, laver les pièces de plastique avec une légère solution savonneuse. Rincer et laisser sécher à l'air.

LEA ESTO ANTES DE EMPEZAR

- Estudie los dibujos de ensamblaje.
- Cada pieza de plástico se identifica por un número.
- Verifique que cada pieza encaje bien antes de pegar en posición.
- No use demasiado pegamento para unir las piezas.
- Use únicamente pegamento para plástico de poliestirena.
- El modelo puede pintarse de acuerdo con las fotografías de la caja.
- Permita que se seque la pintura completamente antes de tocar las piezas.
- Raspe la pintura de las superficies que serán pegadas.
- Para una mejor fijación de la pintura y de las calcomanías, lávense las piezas plásticas en una solución de detergente suave. Enjuáguese y déjense secar al aire.



DECAL (DIP IN WATER)
 DECALCOMANIE (A PLONGER DANS L'EAU)
 DECALCOMANIA (MOJE CON AGUA)



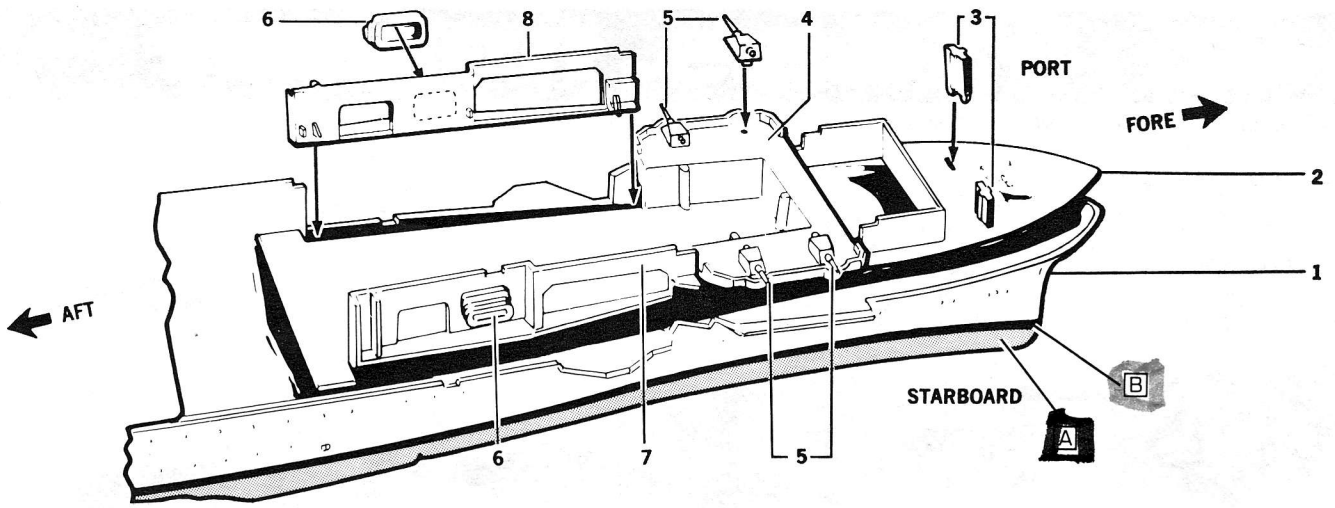
DO NOT CEMENT
 NE PAS COLLER
 NO USE PEGAMENTO



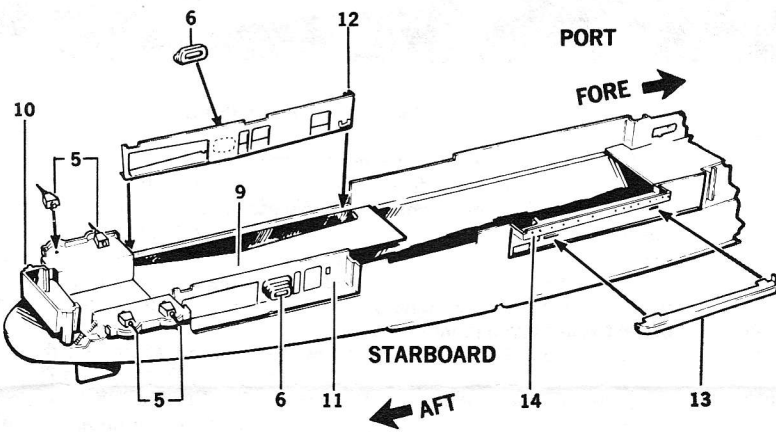
OPTIONAL PARTS
 PIECES EN OPTION
 PIEZAS OPCIONALES

A	FLAT RED	ROUGE TERNE	ROJO APAGADO
B	FLAT BLACK	NOIR TERNE	NEGRO APAGADO
C	WHITE	BLANC	BLANCO
D	GOLD	DORE	DORADO
E	SILVER	ARGENT	PLATA
F	OLIVE DRAB	VERT OLIVE	ACEITUNADO

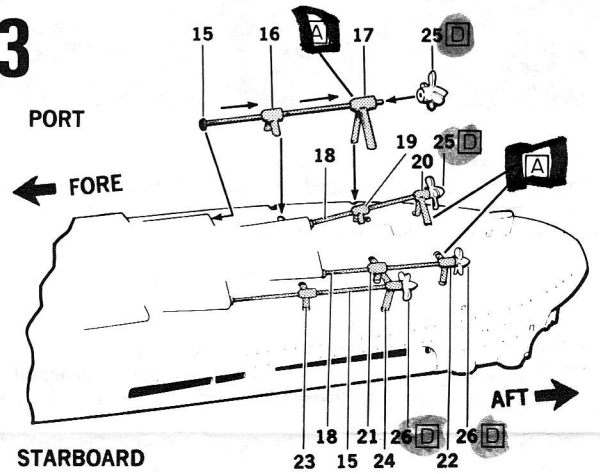
1



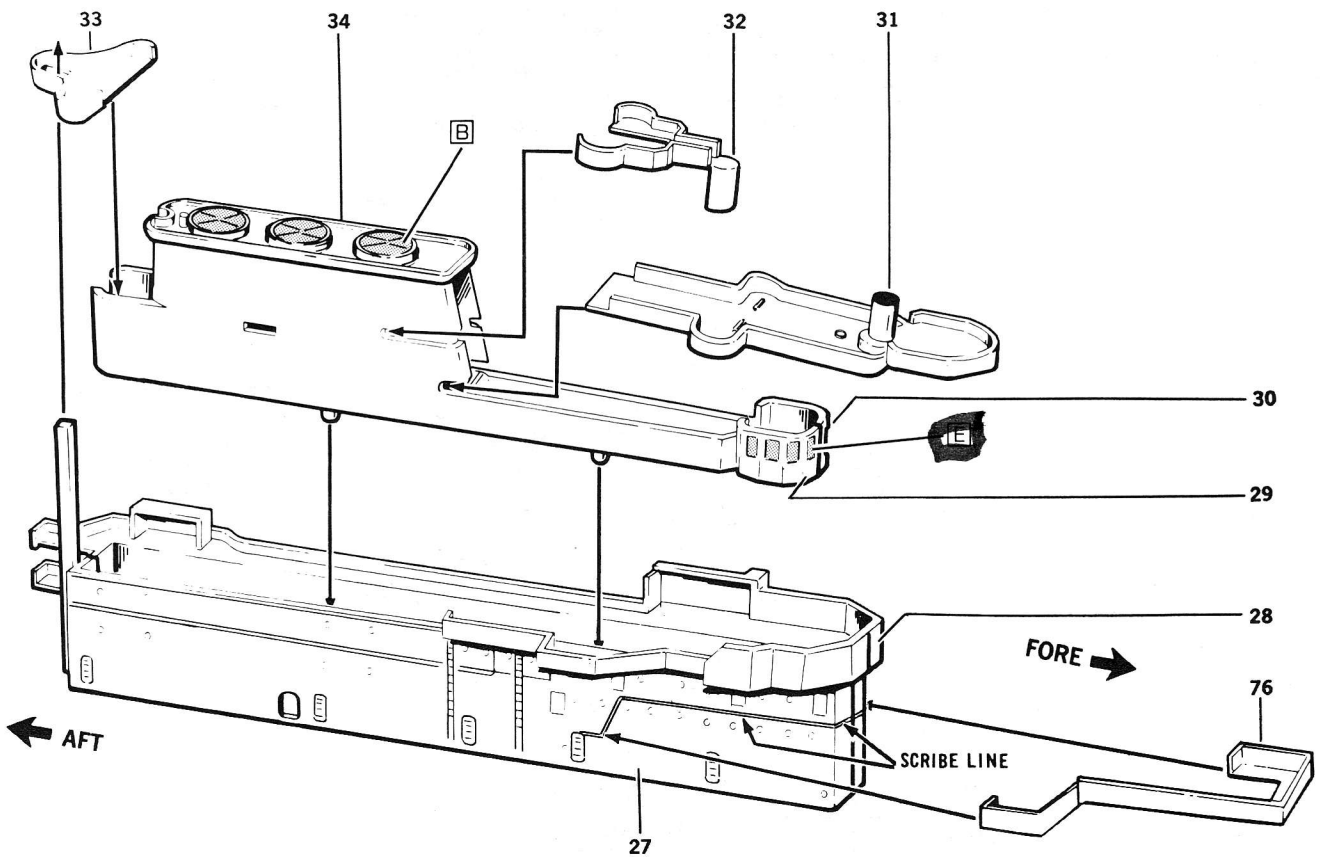
2



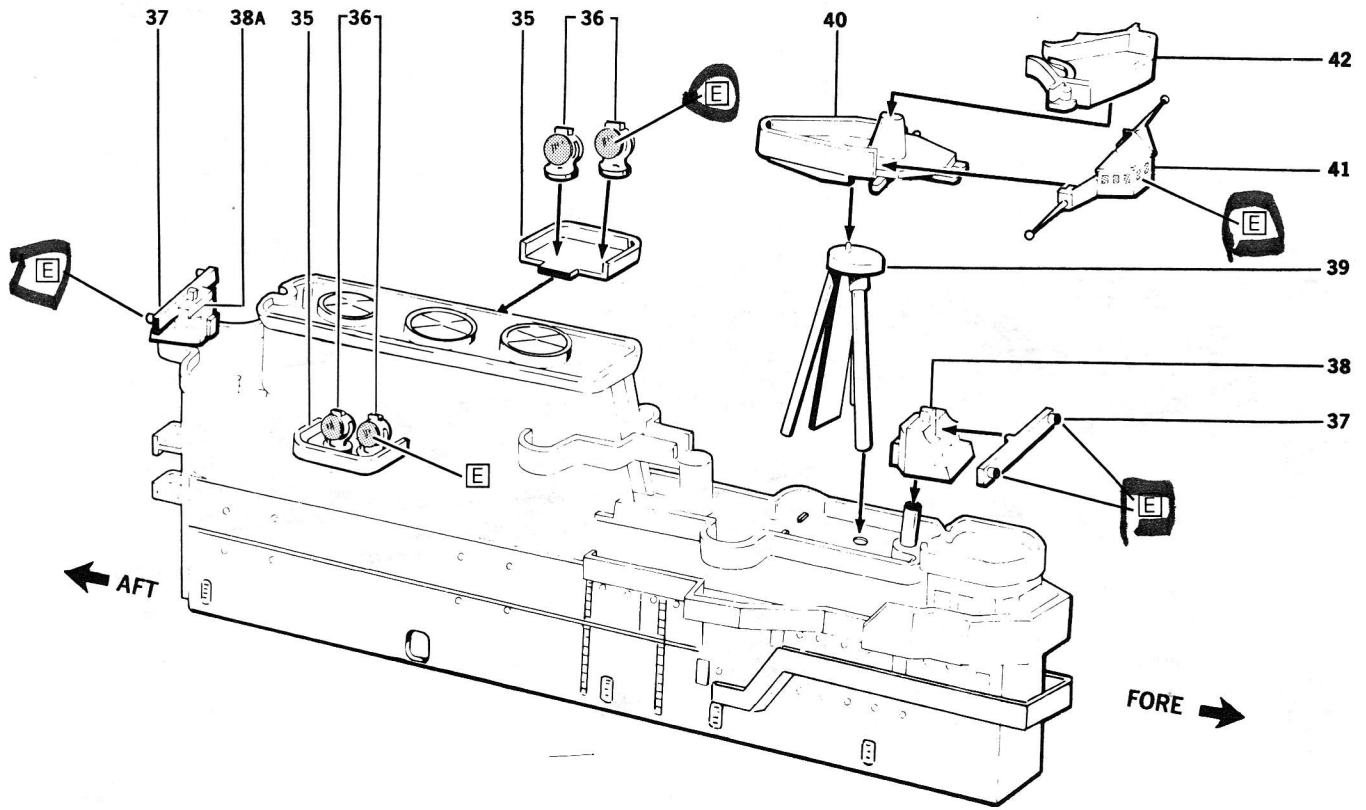
3



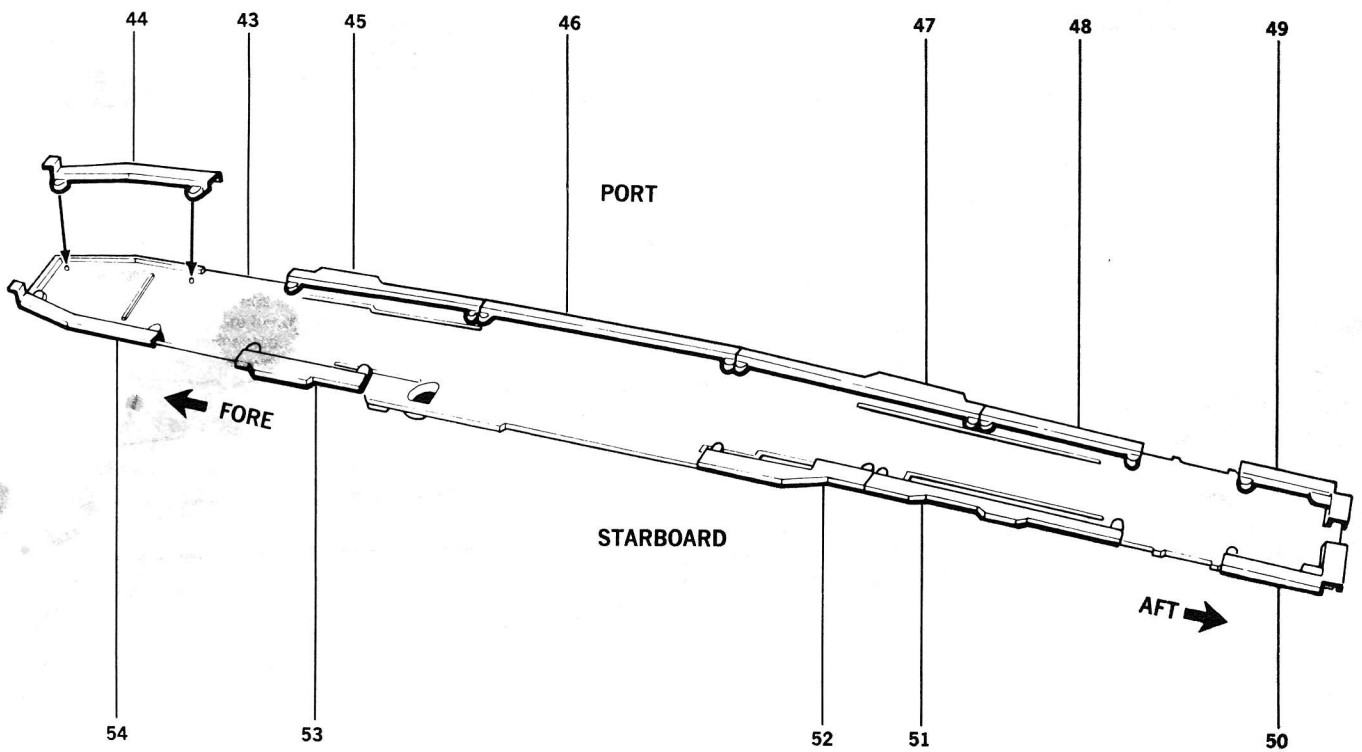
4



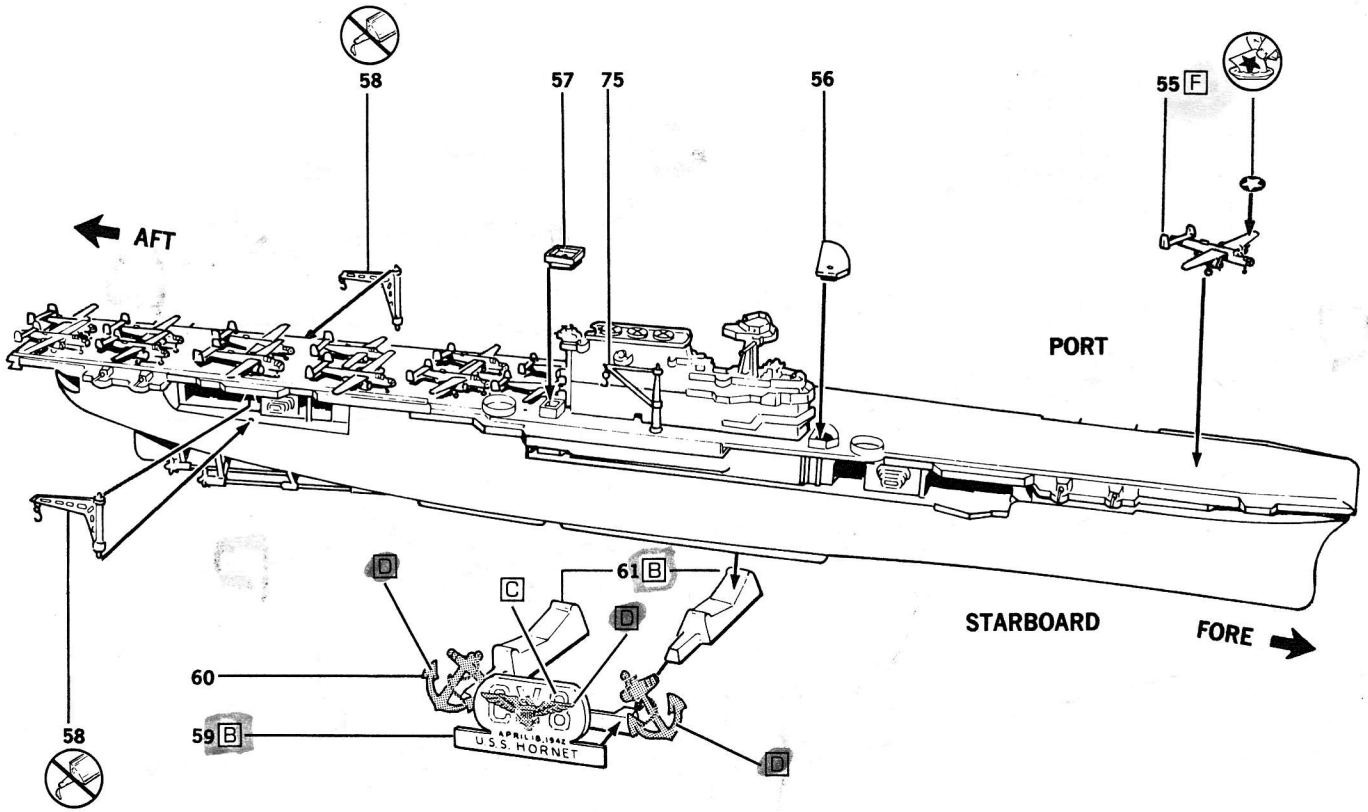
5



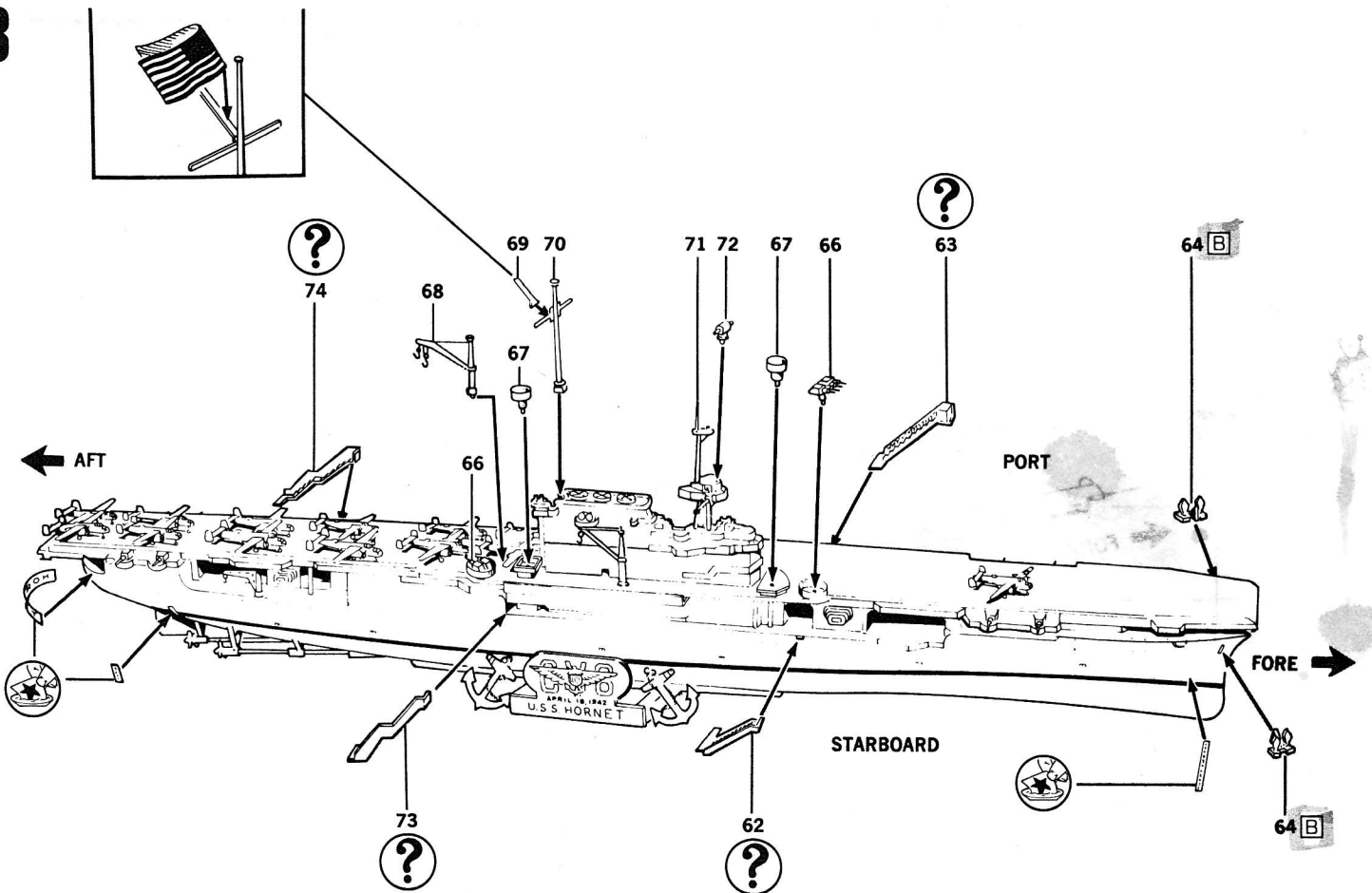
6



7



8



• REMAINING PARTS MAY BE DISCARDED.
 • SE DÉFAIRE DES PIÈCES RESTANTES.
 • LAS PIEZAS QUE SOBREN PUEDEN DESCARTARSE.