



KIT 2893

85289300200

'32 FORD HIGHBOY

No other car says "Street Rod" more than the '32 Ford. Available in a number of body styles, one of the most popular is the '32 Highboy Roadster. The small, sporty body style was originally designed for businessmen as an inexpensive, reliable way to move around while selling their goods. Those same inexpensive roadsters and coupes are now being turned into modern pieces of rolling art. The only factor in determining the look of the featured rod is imagination.

Today's rods feature classic bodies sitting on modern frames, with up-to-date components. Gone are the original buggy springs and friction brakes, in their place you'll find state-of-the-art coil over shocks and disc brakes. The narrow wheels and tires of the 30's have given way to up-to-date tires mounted on aluminum wheels, giving the car a nose-in-the-weeds stance.

While some rodders continue to use original flathead V-8's, most prefer to replace them with newer engines for more performance and better reliability. The old 3-speed crash box transmissions have been replaced with overdrive automatics and everything is

now dressed up with polished billet aluminum or chrome trim.

If you count yourself among the millions of people that love hot rods, street rods and customs of all types, then you may want to check out the Goodguys Rod & Custom Association, the nation's leader in producing and promoting exciting automotive enthusiast events. The Goodguys have over 70,000 members worldwide and currently hold 22 annual events across the US. Whether you drive in your own creation and participate or just come by to eyeball all the fantastic machinery, the Goodguys guarantee a good time.

Check out their website at www.good-guys.com for all the information on the next event nearest you.

While you're there, you can join their mailing list and even become a member, which among many benefits also brings you a subscription to the Goodguys Gazette, their monthly 140+ page large format magazine chock full of event coverage and plenty of full-color pictures of some of the most jaw-dropping rods and customs you've ever laid your eyes on.



* REPEAT SEVERAL TIMES
* A REPETER PLUSIEURS FOIS



* OPTIONAL PARTS
* PIECES EN OPTION



* DECAL
* DECAL COMANIE



* ALTERNATIVE ASSEMBLY
* ENSEMBLAGE ALTERNATIVE



* CEMENT TOGETHER
* A COLLER



* REMOVE AND THROW AWAY
* A RETIRER ET JETER



* DO NOT CEMENT
* NE PAS COLLER

READ THIS BEFORE YOU BEGIN

- * Study the assembly drawings.
- * Each plastic part is identified by a number.
- * In the assembly drawings, some parts will be marked by a star (★) to indicate chrome plated plastic.
- * For better paint and decal adhesion, wash the plastic parts in a mild detergent solution. Rinse and let air dry.
- * Check the fit of each piece before cementing in place.
- * Use only cement for polystyrene plastic.
- * Scrape plating and paint from areas to be cemented.
- * Allow paint to dry thoroughly before handling parts.
- * Any unused parts may be discarded.

DECAL APPLICATION INSTRUCTIONS

1. Cut desired decal from sheet.
2. Dip decal in water for a few seconds.
3. Place wet decal on paper towel.
4. Wait until decal is movable on paper backing.
5. Place decal in position on model, face up and slide backing away.
6. Press out air bubbles with a soft damp cloth.
7. Milkiness that may appear is for better decal adhesion and will dry clear. Wipe away any excess adhesive.
8. Do not touch decal until fully dry.
9. Allow the decals 48 hours to dry before applying clear coat.

NOTE: Decals are compatible with setting solutions or solvents.

LIRE CE QUI SUIT AVANT DE COMMENCER

- * Etudier les schémas de montage.
- * Chaque pièce en plastique est identifiée par un numéro.
- * Sur les schémas de montage, certaines pièces sont marquées d'une étoile (★) pour indiquer qu'elles sont en plastique chromé.
- * Pour une meilleure prise de la peinture et des autocollants, laver les pièces en plastique avec une solution détergente peu concentrée. Les rincer et les laisser sécher à l'air.
- * Vérifier que chaque pièce s'ajuste bien avant de la coller en place.
- * N'utiliser que de la colle pour polystyrène.
- * Gratter les parties à coller pour enlever le chrome et la peinture.
- * Laisser la peinture bien sécher avant de manipuler les pièces.
- * Toute pièce inutilisée peut être jetée.

DIRECTIVES D'APPLICATION DES AUTOCOLLANTS

1. Découper l'autocollant désiré de la feuille.
2. Tremper l'autocollant dans de l'eau pendant quelques secondes.
3. Placer l'autocollant mouillé sur une serviette en papier.
4. Attendez que l'autocollant puisse être déplacé sur son support en papier.
5. Mettre l'autocollant en position sur le modèle face sur le dessus et faire glisser le support pour l'enlever.
6. Appuyer avec un chiffon doux humide pour éliminer les bulles d'air.
7. La substance laiteuse qui peut apparaître est destinée à améliorer l'adhésion de l'autocollant et devient incolore au séchage. Essuyer pour enlever tout excédent d'adhésif.
8. Ne pas toucher l'autocollant tant qu'il n'est pas bien sec.
9. Laisser l'autocollant sécher pendant 48 heures avant d'appliquer une couche transparente.

REMARQUE: Les autocollants sont compatibles avec les solutions de fixation ou les solvants.

This paint guide is provided to complete this kit as shown on the box.

Ce guide de peintures est fourni pour reproduire le modèle réduit qui apparaît sur la boîte.

Gloss Black	Noir Lustre
Flat Black	Noir Terne
Gloss Blue	Bleu Lustre
Aluminum	Aluminum
Steel	Acier
Gloss Red	Rouge Brillant

If you have any questions or comments, call our hotline at: **(800) 833-3570**
or, please write to:

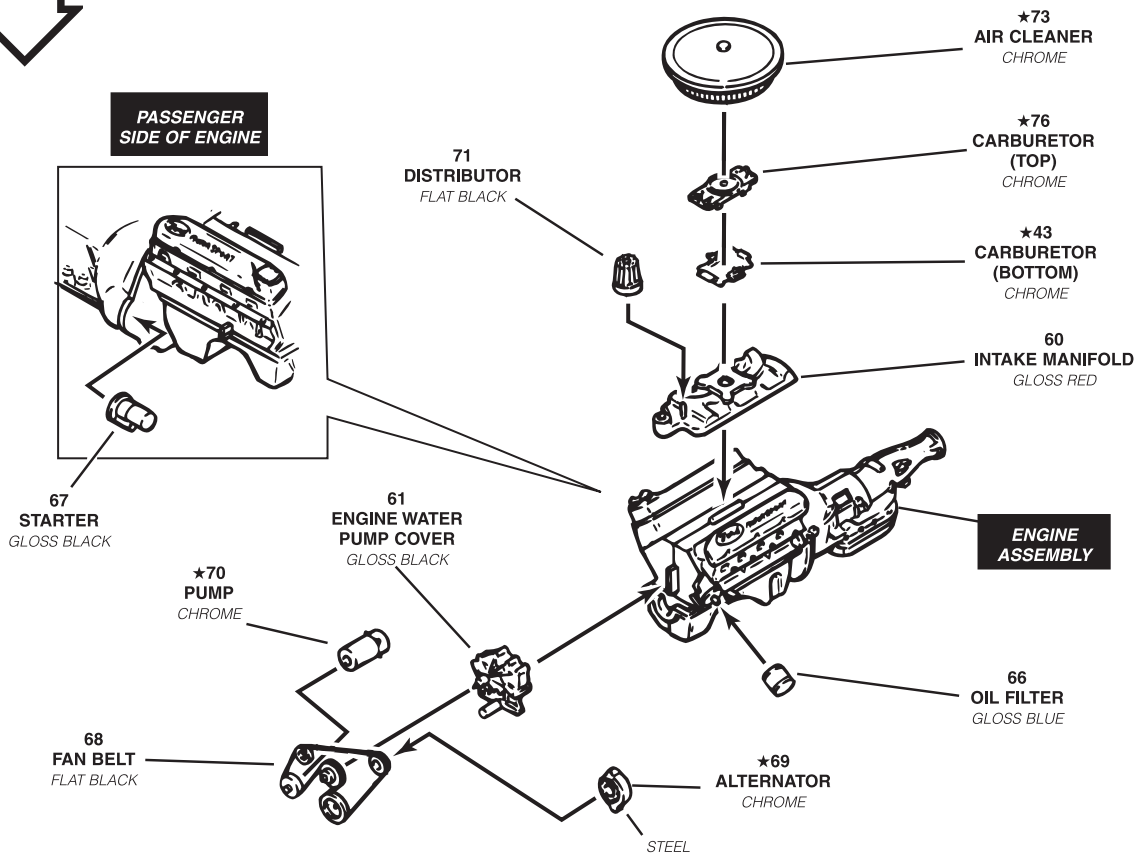
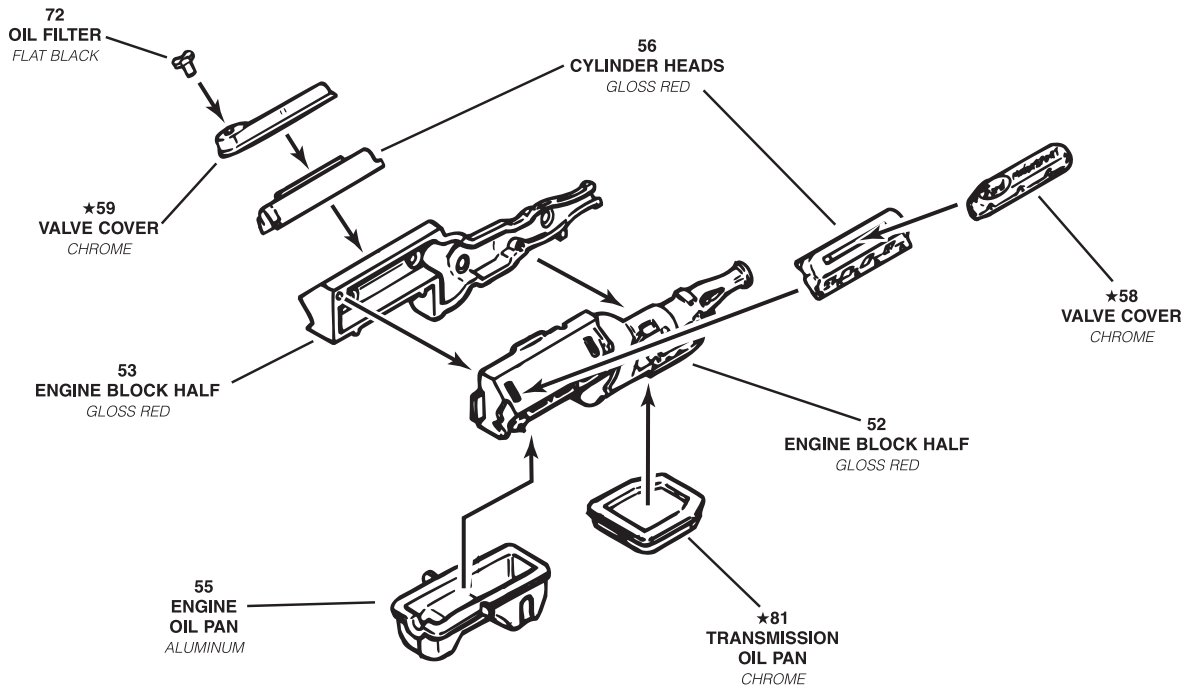
Revell-Monogram Consumer Service Department, 725 Landwehr Road, Northbrook, Illinois 60062

Be sure to include the plan number (85289300200), part number, description, your return address and phone number.

Visit our website: www.revellmonogram.com

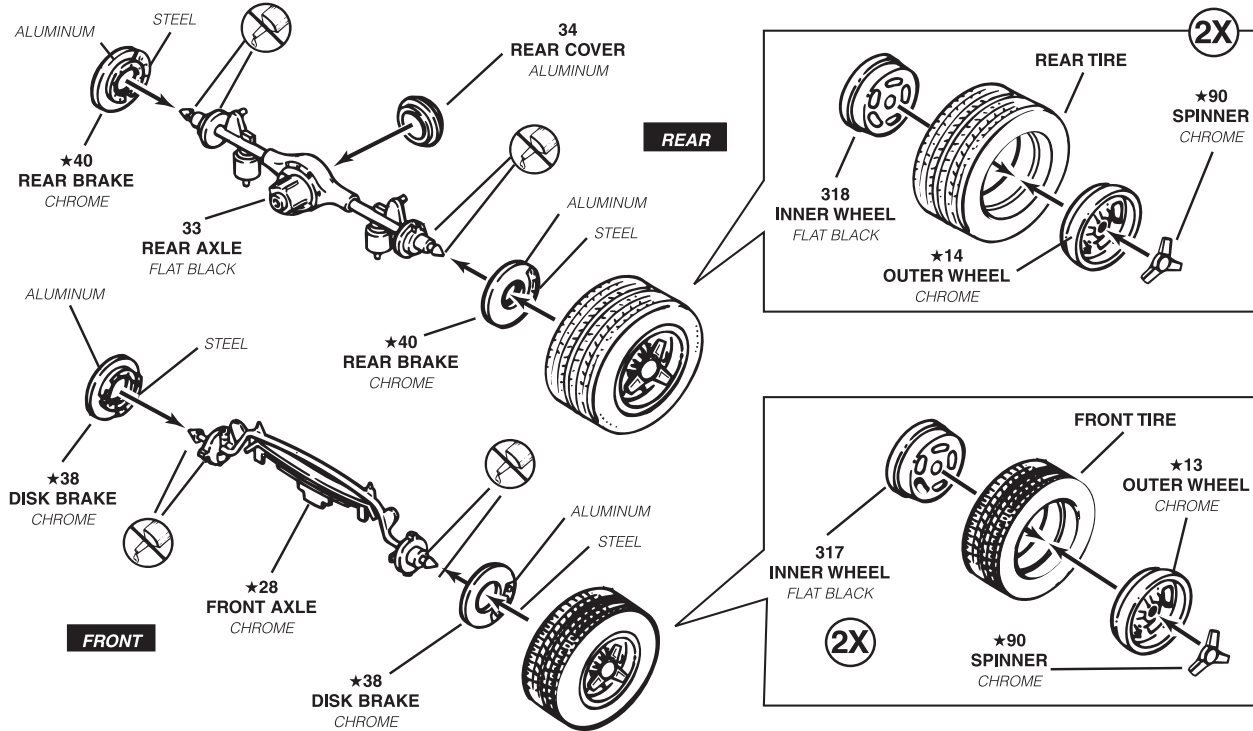
1

ENGINE ASSEMBLY



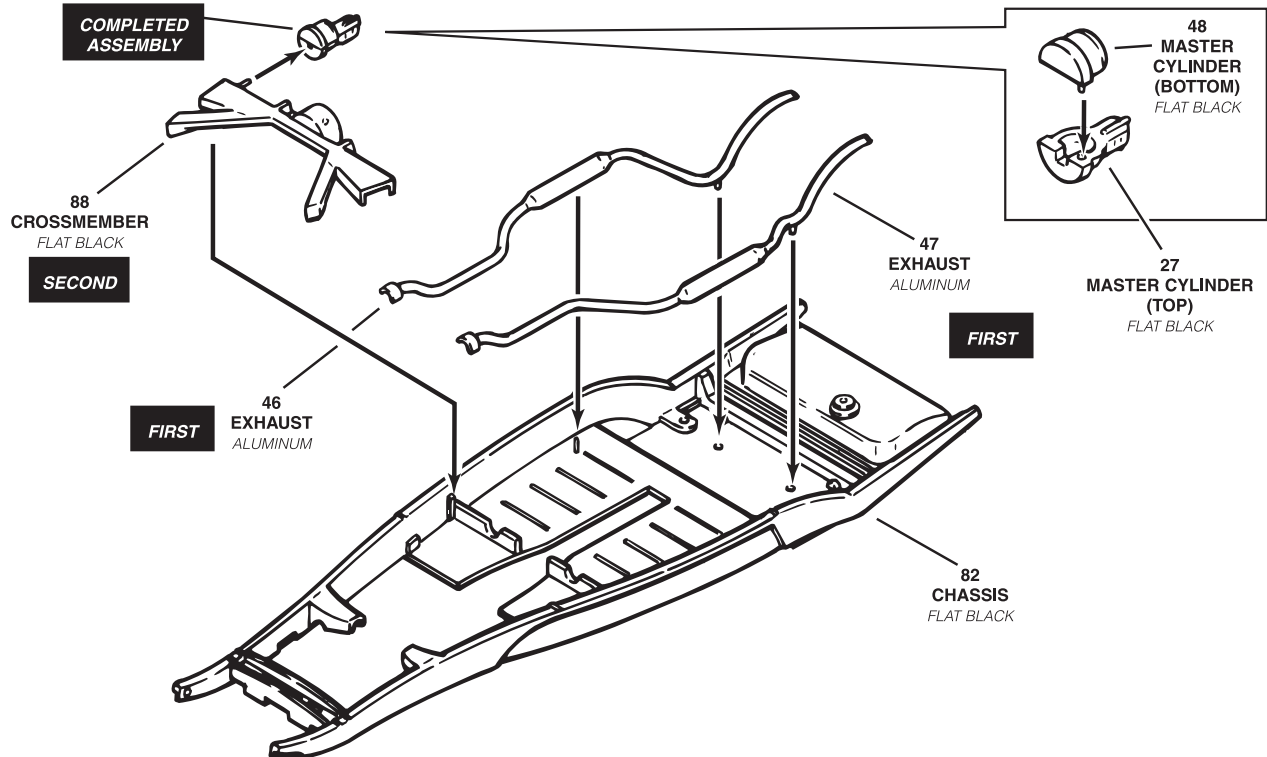
2

FRONT & REAR AXLE ASSEMBLY



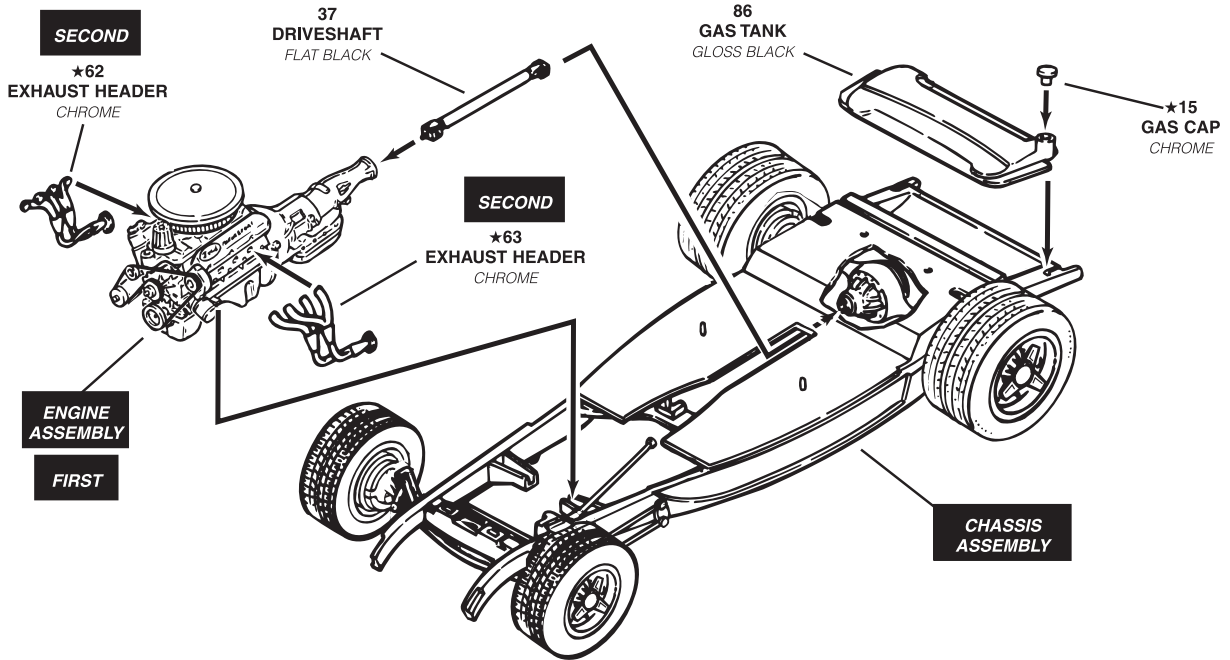
3

CHASSIS ASSEMBLY



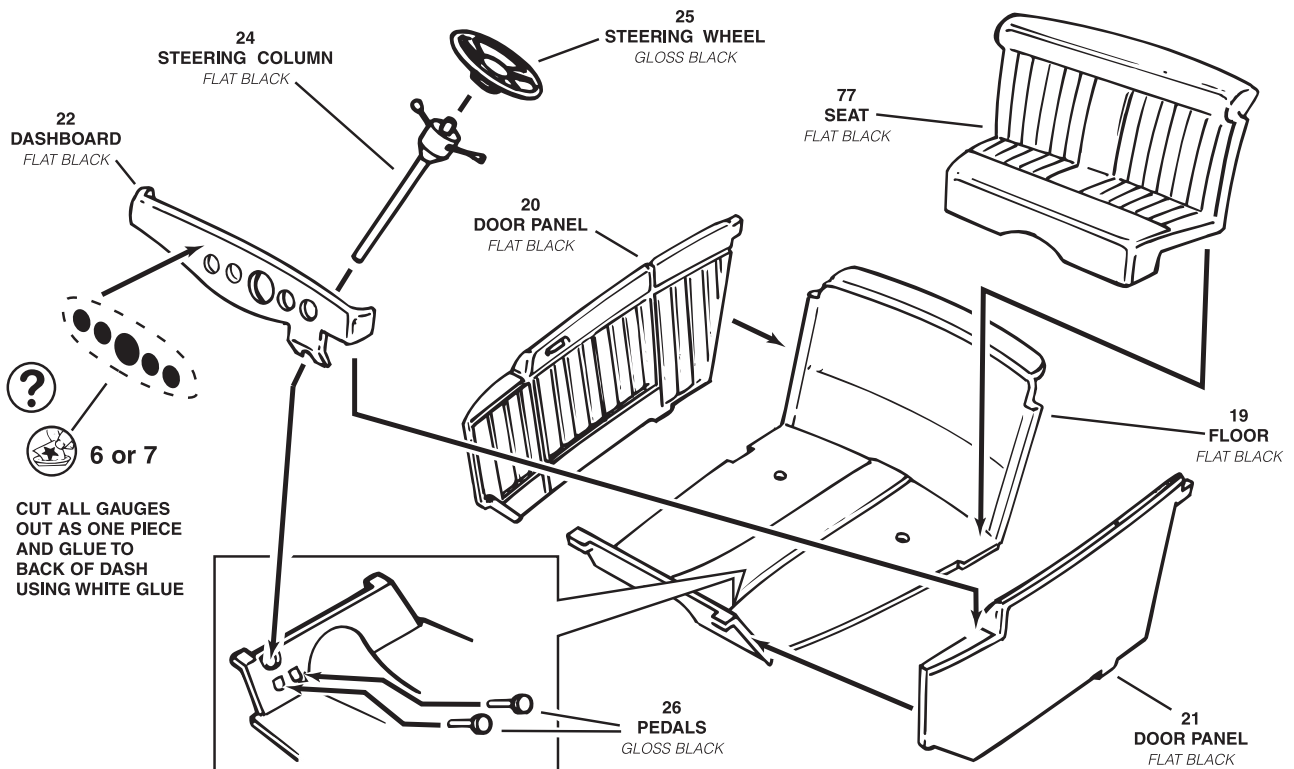
5

ENGINE AND CHASSIS ASSEMBLY



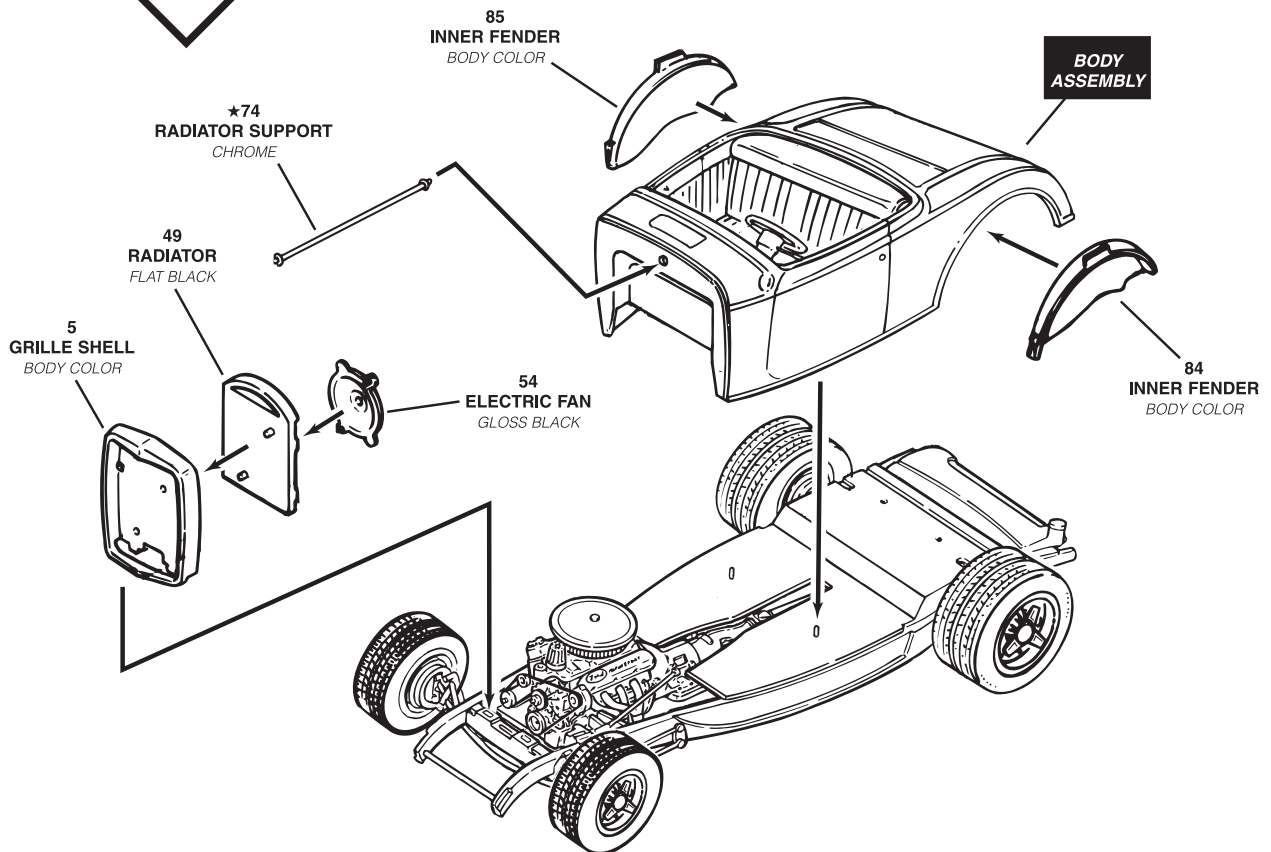
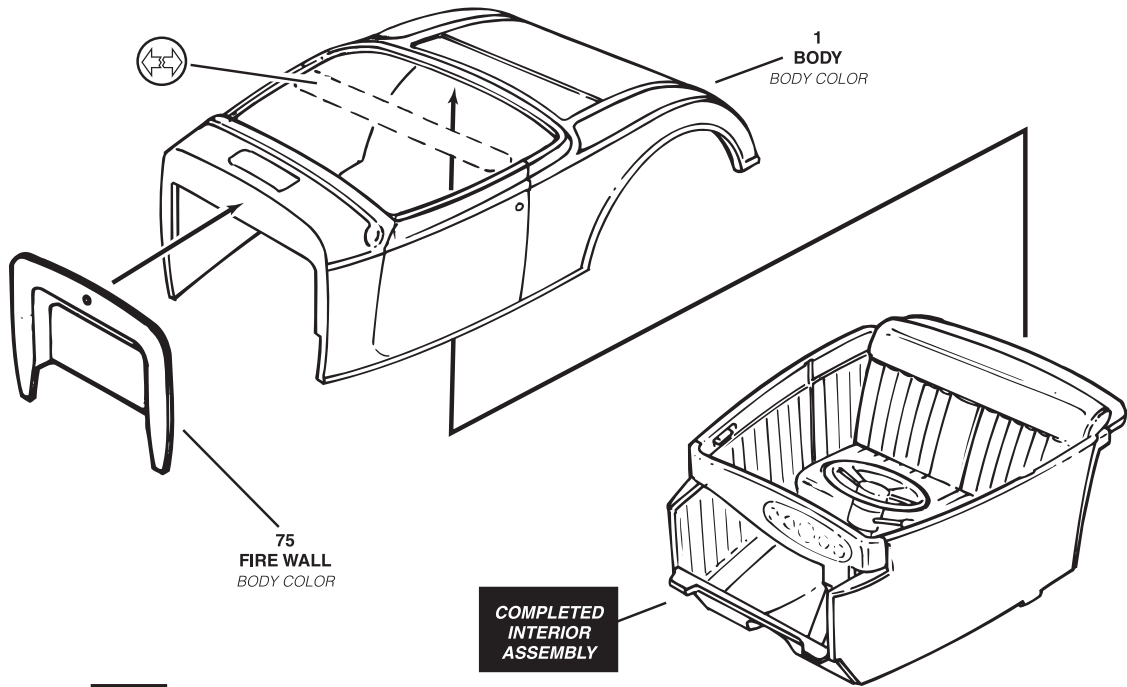
6

INTERIOR ASSEMBLY

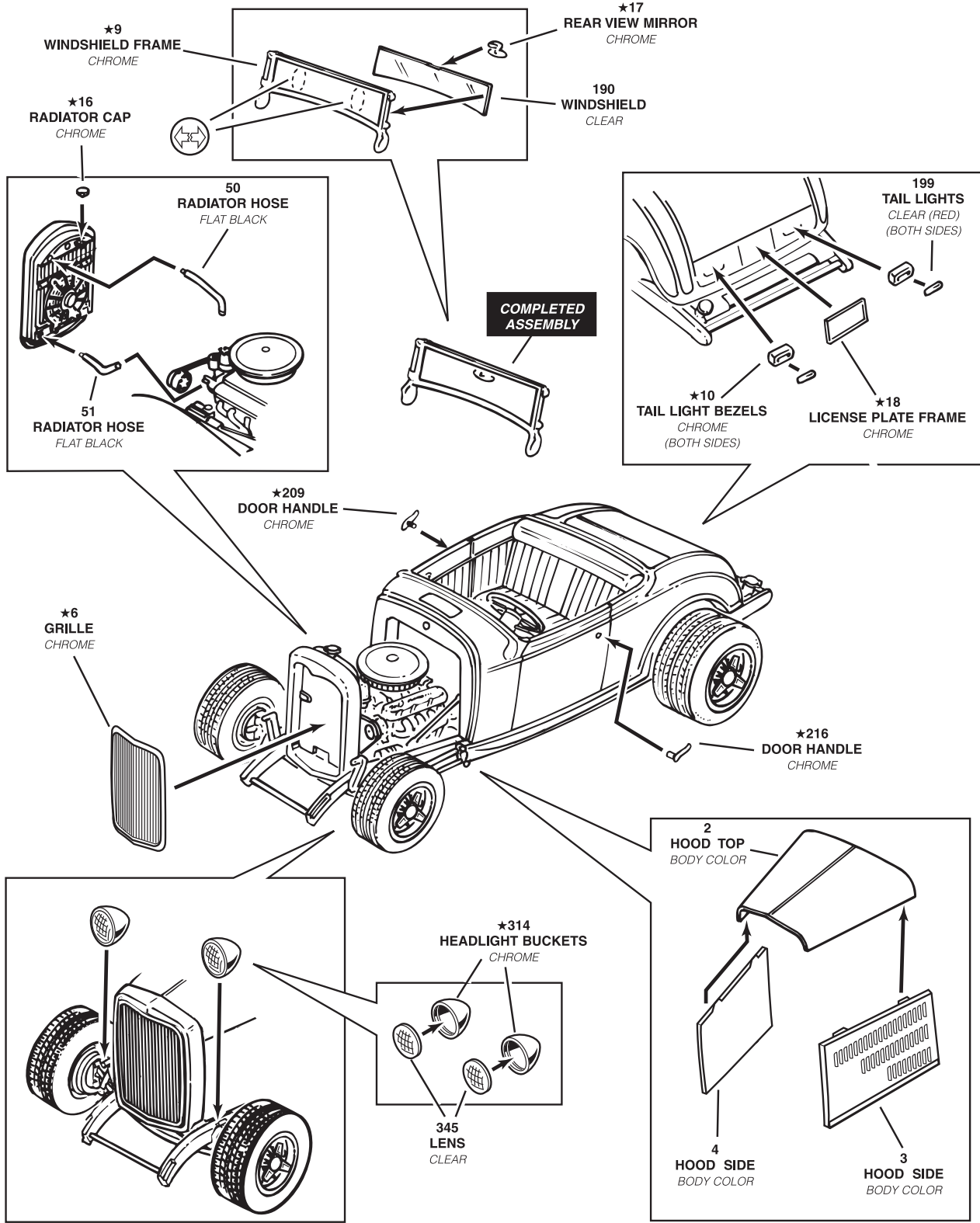


7

DASH ASSEMBLY



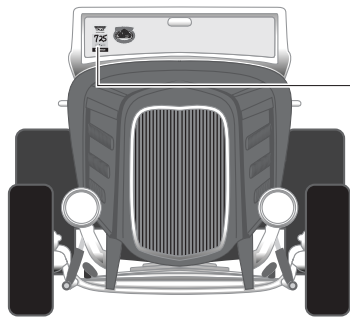
FINAL ASSEMBLY



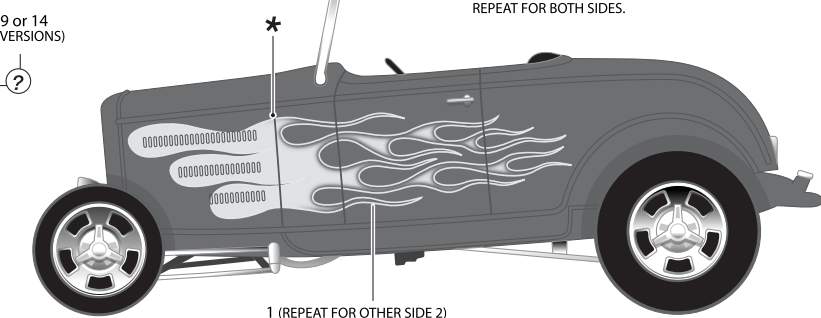
9

DECAL PLACEMENT

VERSION 1 BODY COLOR GLOSS RED WITH BLACK INTERIOR



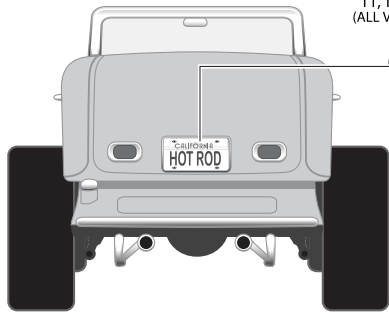
8, 9 or 14
(ALL VERSIONS)



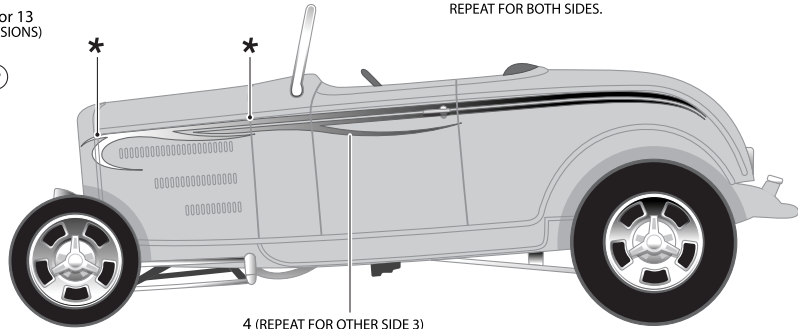
1 (REPEAT FOR OTHER SIDE 2)

* NOTE: AFTER DECAL HAS COMPLETELY DRIED, CAREFULLY CUT HERE TO REMOVE ENGINE COVER. REPEAT FOR BOTH SIDES.

VERSION 2 BODY COLOR GLOSS SILVER WITH RED INTERIOR



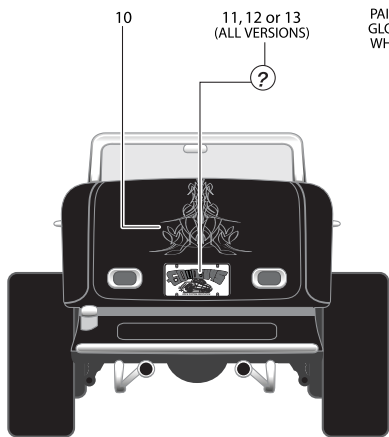
11, 12 or 13
(ALL VERSIONS)



4 (REPEAT FOR OTHER SIDE 3)

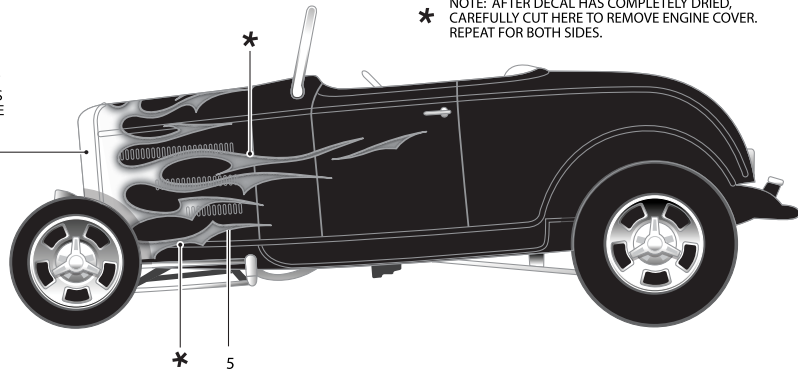
* NOTE: AFTER DECAL HAS COMPLETELY DRIED, CAREFULLY CUT HERE TO REMOVE ENGINE COVER. REPEAT FOR BOTH SIDES.

VERSION 3 BODY COLOR GLOSS BLACK WITH WHITE INTERIOR



11, 12 or 13
(ALL VERSIONS)

PAINT
GLOSS
WHITE



* 5

* NOTE: AFTER DECAL HAS COMPLETELY DRIED, CAREFULLY CUT HERE TO REMOVE ENGINE COVER. REPEAT FOR BOTH SIDES.

PAINT GLOSS WHITE

