



## HARDWARE



(x2)

2-56x1/4" Button  
Head Screw



(x2)

Shock End Ball



(x2)

2.5mm Washer

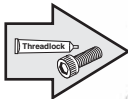


(x2)

3mm Washer (Silver)

## **IMPORTANT!**

Thoroughly clean screws of oil **before**  
applying threadlock.



2.5mm Washer



3mm Washer



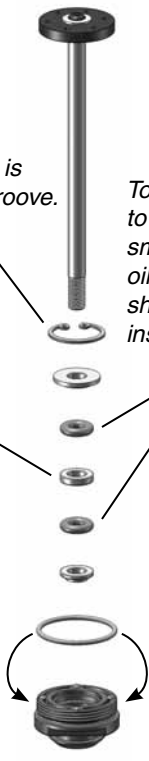
**Note:** The notch in the 3mm  
silver washer does not affect  
shock performance and can  
be positioned in any direction.

***IMPORTANT!***

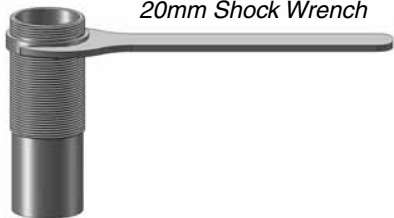
*Make sure the snap ring is securely seated in the groove.*

*To help prevent damage to the O-rings, apply a small amount of shock oil to the O-rings and shaft threads before installing the shock shaft.*

**Note:** *Make sure the spacer fits freely with no resistance in the shock cartridge. If necessary, sand or trim spacer to fit.*



*20mm Shock Wrench*



*14mm Shock Wrench*



### ***IMPORTANT!***

*When installing the shock cartridge into the shock body, be sure to not cross-thread the cartridge in the shock body. Press the shock cartridge into the bottom of the shock body and rotate the cartridge backwards until you feel the threads engage. Then thread the cartridge into the shock body until it bottoms out. GENTLY snug the cartridge (DO NOT overtighten!)*



*Be careful not to damage the shock shaft when installing the shock ends.*



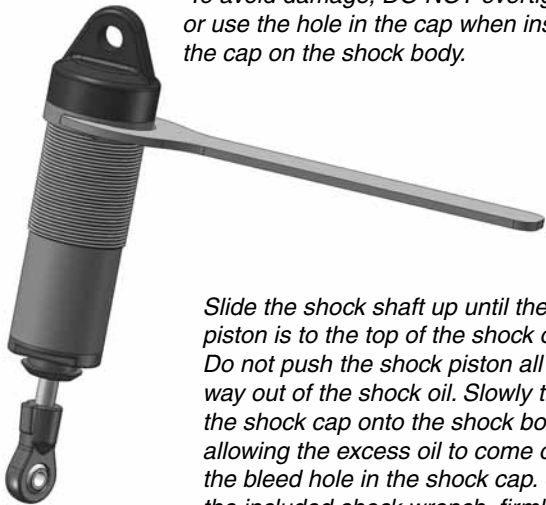
Fill the shock body with shock oil (with shock shaft fully extended, oil level should be just below the top of the shock body). Gently work the shaft up and down in the shock body to allow the air bubbles to work out of the oil.

*Make sure the bladder is fully seated in the shock cap groove before installing it on the shock body.*



### ***IMPORTANT!***

*To avoid damage, DO NOT overtighten or use the hole in the cap when installing the cap on the shock body.*



*Slide the shock shaft up until the piston is to the top of the shock oil. Do not push the shock piston all the way out of the shock oil. Slowly thread the shock cap onto the shock body, allowing the excess oil to come out of the bleed hole in the shock cap. Using the included shock wrench, firmly tighten the shock cap.*

*Install the shock boot over the shock end and secure it in place on the shock body. Gently work the shock end out the bottom of the shock boot. The bottom of the shock boot should be firmly in place around the top of the shock end.*

*Make sure the spring retainer keys onto the tab on the shock end.*

*Be careful not to tear the shock boots during installation.*

*Thread the adjustable collar onto the shock body.*

