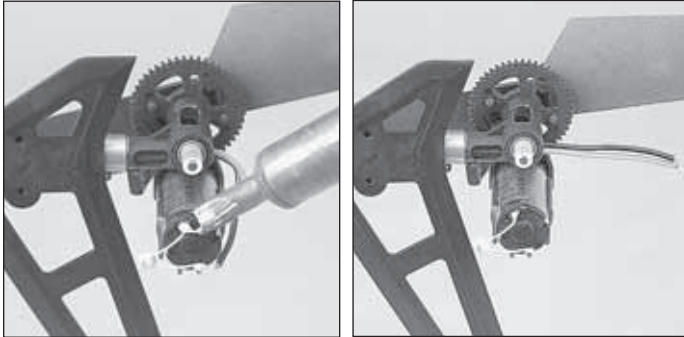
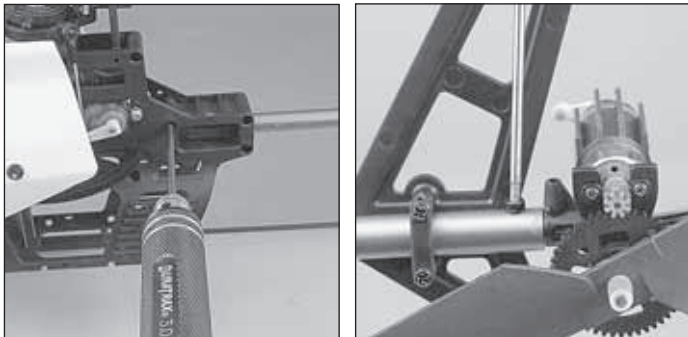


AXE CP CARBON FIBER TAIL BOOM UPGRADE INSTALLATION

REMOVING THE TAIL ASSEMBLY

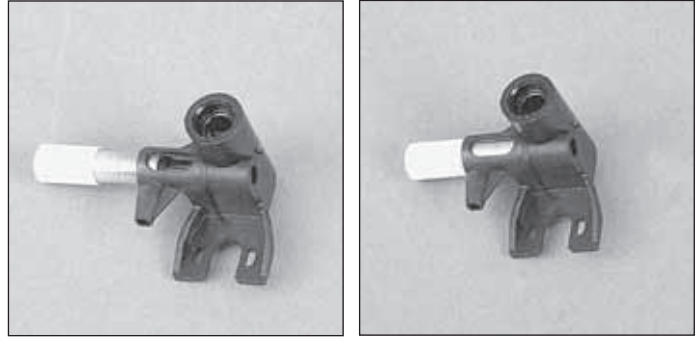


❑ Mark the motor where the positive (red) and negative (black) wires connect. Being careful not to unsolder the capacitor from the motor, unsolder the positive and negative wires from the motor. Straighten the two tail motor wires and align them with the hole in the plastic tail motor mount.



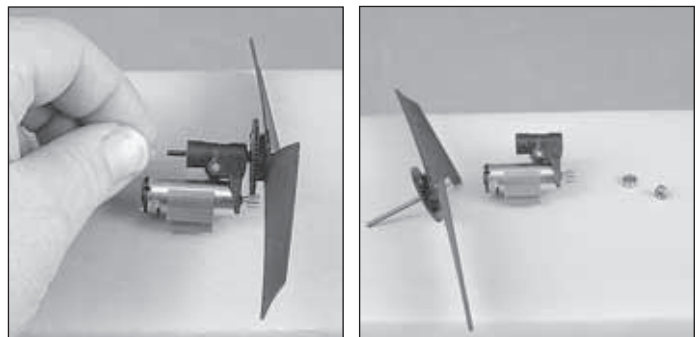
❑ Loosen the four Phillips screws on the main frame as shown. Rotate and pull back to remove the tail boom from the helicopter. The two long tail motor wires will remain on the helicopter but pull free from the tail boom. Using a 1/16" [1.5mm] hex wrench, remove the screw from the bottom of the tail boom. Remove the tail motor mount by pulling back while rotating the gearbox.

INSTALL THE CARBON FIBER TAIL BOOM

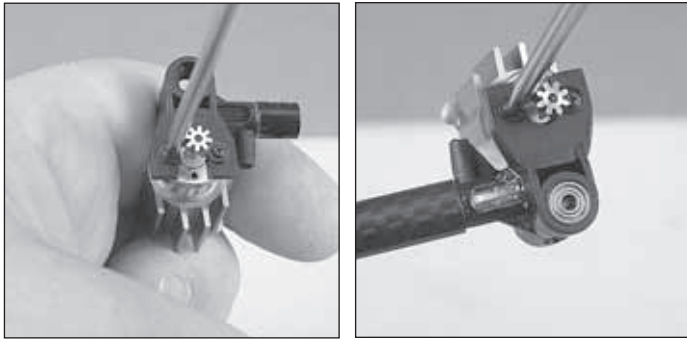


❑ Use alcohol and a paper towel to clean the aluminum pin. Make note that half of the pin is smooth and half of the pin is knurled. The smooth side slides into the plastic motor mount and the knurled end slides into the tail boom. Mix a small amount of 6 minute epoxy. Apply the epoxy to the inside of the plastic motor mount and to the smooth side of the aluminum pin. Insert the pin into the motor mount as shown. Remove any excess epoxy with a paper towel and alcohol. The pin does not get glued into the boom until later.

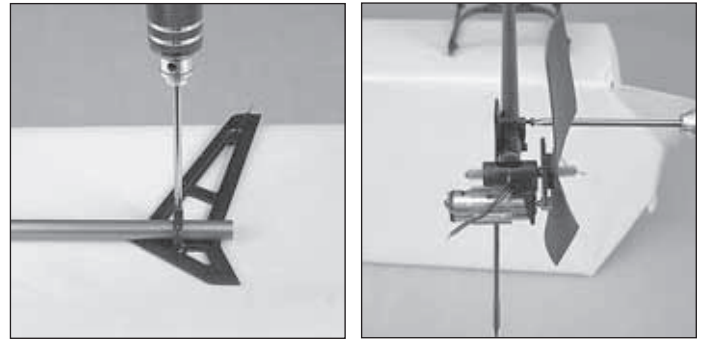
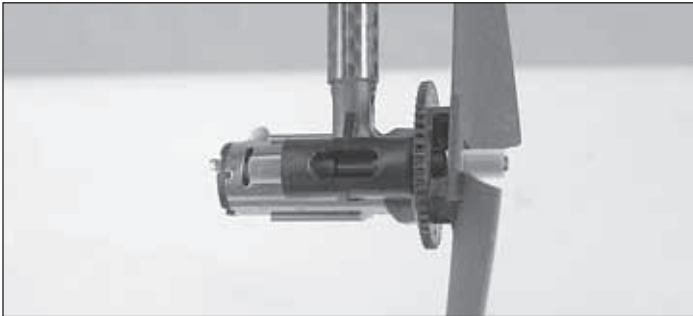
SWAPPING COMPONENTS FROM THE OLD TAIL ROTOR MOUNT TO THE NEW TAIL ROTOR MOUNT.



❑ Remove the silicone tubing from the left side of the tail rotor shaft. Pull the tail rotor shaft out of the gear box. Using a 1/16" [1.5mm] hex wrench, carefully push both bearings out of the tail rotor mount.

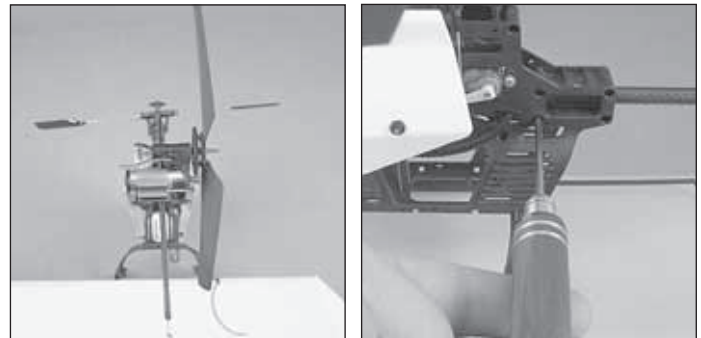


any excess epoxy with a paper towel and alcohol. Allow the epoxy to cure undisturbed. Re-solder the positive and negative wires to the motor.



❑ Remove the tail fin from the aluminum boom and re-install it onto the carbon boom.

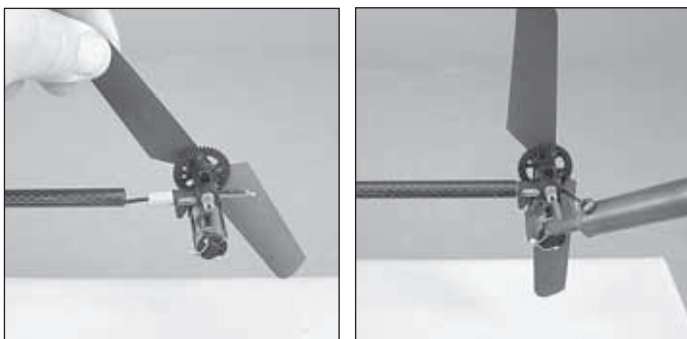
❑ Use a small Phillips screwdriver to remove the two motor screws and re-install the motor into the new motor mount. Slide the tail rotor shaft through the bearings and re-install the silicone tubing as shown above.



❑ The tail motor mount must be perpendicular with the main shaft and the tail fin must be parallel to the main shaft. Once the fin and motor mount are aligned, tighten the four tail boom clamp screws.



❑ Slide the two tail motor wires into the tail boom and re-install the tail boom onto the helicopter. The boom should protrude 1/8" [3mm] from the front of the tail boom mount.



❑ Slide the two motor wires through the aluminum pin and out the back of the motor mount. Mix a small amount of 6 minute epoxy and apply it to the aluminum pin. Slide the pin into the carbon boom and remove