



DA500 Paint Gun

ASSEMBLY AND OPERATION MANUAL

Thank you for purchasing the Model Maker™ DA500 paint gun. This manual contains the instruction you need to use and maintain your new paint gun. Read over this manual thoroughly before operating the Model Maker paint gun.

SAFETY PRECAUTIONS

- Never spray near an open flame.
- Always wear an adequate respirator when using the paint gun.
- Always spray in a well ventilated area.
- Never spray near an item where overspray can get on them and cause damage.
- Always properly maintain you paint gun to achieve optimal performance and extended life of the paint gun.
- Never allow children to use the paint gun without adult supervision.
- Always properly dispose of excess paint in the proper location.
- Always use caution when handling the needle. It is extremely sharp and easily damaged.
- Always shut off the air source before disconnecting the air hose.
- Always disconnect the air hose from the air source before disconnecting it from the paint gun.

OPERATION

Remove the DA500 paint gun and air hose from the plastic storage case. Thread the small end of the airbrush hose onto the included adapter then thread the adapter onto the bottom of the paint gun. Attach the other end of the hose to the air source (air compressor/propellant). Make sure the hose is securely installed at both ends to prevent air leaks. If attaching to an air compressor, set the regulator between 25 and 40 psi depending on the type of paint that you are using. This is a general starting point and will vary from paint to paint. You will have to find the psi setting that works best for you and your paint.

Remove the plastic color cup from the plastic storage case. Install it onto the body of the paint gun. Make sure it is securely in place to prevent it from falling off during use. Add the desired paint to the color cup. Gently pull the paint gun trigger back. This regulates how much paint is being sprayed through the paint gun. The air adjust screw regulates the amount of air being sprayed through the paint gun.

You should practice with the paint gun on a scrap piece of paper or cardboard. Make various strokes with the paint gun, varying the amount of air and paint being sprayed. This will help you achieve the desired spray pattern.



For small, thin lines, use more air and less paint, holding the paint gun slightly closer to the surface. To achieve larger lines, add more paint with the air.

Make sure you keep the paint gun parallel to the surface you are painting. If you use an arcing motion it will cause the surface to be uneven because more paint will be sprayed in the center than on the edges.

CHANGING COLORS

To change colors while using the color cup, simply drain the excess from the color cup into an acceptable container. Then remove the color cup from the paint gun and wash it out using airbrush cleaner or lacquer thinner. Again, this depends on the type of paint being used. Flush the remainder of the previous color out of the paint gun using the necessary cleaner. Re-install the color cup onto the paint gun and pour in the new color.

MAINTENANCE

Properly cleaning and maintaining your paint gun is vital to the continued consistent performance of the paint gun. The paint gun must be thoroughly cleaned out after each use to prevent dried paint in the passages.

BETWEEN COLORS

If you are using water based paints:

After you have finished spraying a color, you should detach the color cup and spray the remaining paint in the paint gun onto a scrap piece of paper. Then flush the paint gun out with airbrush cleaner. (Window cleaner will act as a suitable substitute.) When flushing the paint gun out, make sure to spray both fine and broad patterns, working the needle back and forth. This will help get as much of the leftover paint out as possible.

If you are using a paint that requires lacquer thinner for clean-up:

After you have finished spraying a color, you should detach the color cup and spray the remaining paint in the paint gun onto a scrap piece of paper. Then flush the paint gun out with lacquer thinner. When flushing the paint gun out, make sure to spray both fine and broad patterns, working the needle back and forth. This will help get as much of the leftover paint out as possible.

READ THROUGH THIS MANUAL BEFORE USING YOUR PAINT GUN. IT CONTAINS IMPORTANT INSTRUCTIONS AND WARNINGS CONCERNING THE USE OF THIS PAINT GUN.

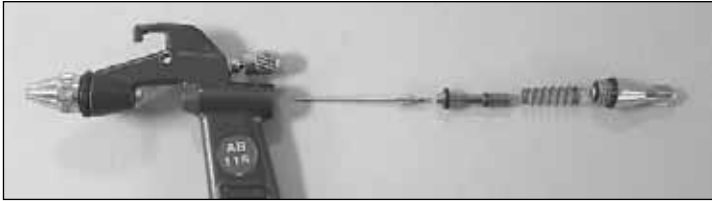
If the buyer is not prepared to accept the liability associated with the use of this product, the buyer is advised to return it immediately in new and unused condition to the place of purchase.

AFTER EACH USE

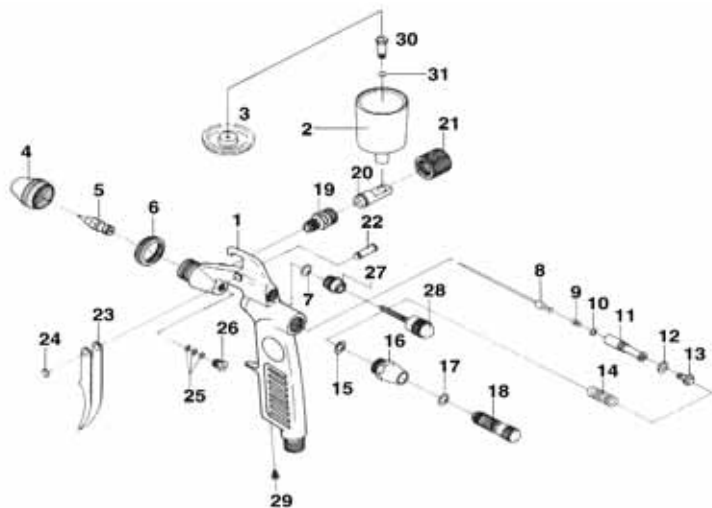
1. Remove the air hose from the paint gun so that it is easier to work on.
2. Remove the E-clip and pin that secure the trigger to the paint gun. Remove the trigger from the paint gun.



3. Remove the lock screw from the back of the paint gun. This will allow you to remove the trigger valve assembly and needle. Be careful not to damage the needle when removing it from the paint gun assembly.



4. Clean the needle and the inside of the paint gun thoroughly with the correct cleaner for your paint.
5. Re-assemble the needle, trigger valve and lock screw back onto the paint gun body.
6. Re-install the trigger and pin then secure them in place with the E-clip.



1	HCAR4301	BODY	22	HCAR4322	TRIGGER RIVET
2	HCAR4302	COLOR CUP 22CC	23	HCAR4323	TRIGGER
3	HCAR4303	CUP COVER	24	HCAR4324	CIRCLIP
4	HCAR4304	AIR TIP SEAL	25	HCAR4325	TEFLON O-RING
5	HCAR4305	FLUID TIP FINE	26	HCAR4326	SEAL NUT
6	HCAR4306	LOCK NUT	27	HCAR4327	AIR FLUID LOCK SCREW
7	HCAR4307	O-RING	28	HCAR4328	AIR FLUID ADJUSTMENT SCREW
8	HCAR4308	FLUID NEEDLE FINE	29	HCAR4329	PLUG SCREW
9	HCAR4309	FLUID NEEDLE SPRING	30	HCAR4330	CUP FIXING SCREW
10	HCAR4310	NEEDLE O-RING	31	HCAR4331	CUP FIXING SCREW O-RING
11	HCAR4311	TRIGGER VALVE			
12	HCAR4312	VALVE SEAL			
13	HCAR4313	SEALING SCREW			
14	HCAR4314	VALVE SPRING			
15	HCAR4315	LOCK SCREW O-RING			
16	HCAR4316	LOCK SCREW			
17	HCAR4317	FLUID ADJUSTMENT SCREW O-RING			
18	HCAR4318	FLUID ADJUSTMENT SCREW			
19	HCAR4319	CUP ADAPTER SCREW			
20	HCAR4320	CUP ADAPTER			
21	HCAR4321	LOCK NUT			

MASKING

A good quality masking tape or Hobbico® Master Mask™ are both good masking materials. The job should be evaluated and then decide which will work best for each situation. Make sure to properly seal the masking tape down to prevent bleeds. If using Hobbico Master Mask, make sure you follow the instructions on the container. Using too little of the Master Mask will cause problems when you try to remove it.

WARRANTY

Model Maker warrants this product to be free from defects in material and workmanship for a period of one (1) year from the date of purchase. During that time, we will repair or replace, at our option, any product that does not meet these standards. You will be required to provide proof of purchase date (receipt with UPC proof-of-purchase or invoice).

If, during the one year warranty period, your Model Maker product shows defects caused by abuse, misuse, or accident, it will be repaired or replaced, at our option, at a service charge not greater than 50% of the current retail list price. Be sure to include your daytime telephone number in case we need to contact you about your repair.

Under no circumstances will the purchaser be entitled to consequential or incidental damages.

This warranty gives you specific legal rights, and you may also have other rights, which vary from state to state.

If you attempt to disassemble or repair this unit yourself, it may void the warranty.

For service on your Model Maker product, either in or out of warranty, send it post paid and insured to:

Hobby Services
3002 N. Apollo Drive, Suite 1
Champaign IL 61822 USA
(217) 398-0007
www.hobbyservices.com

This warranty applies to USA and Canada only. For service in other countries, please inquire at the place of purchase. Customers residing outside the USA and Canada who wish to have service performed at our USA service center will be responsible for all postage charges.

This product contains a chemical known to the State of California to cause cancer and birth defects or other reproductive harm.

TROUBLE SHOOTING

PROBLEM: The paint gun does not spray when the trigger is pulled.

SOLUTION:

1. The paint may be too thick.
2. The PSI may be too low.
3. The paint gun may be clogged.

PROBLEM: The paint pulsates.

SOLUTION:

1. The nozzle is loose on the body.
2. The air hole in the top of the jar assembly is plugged.

PROBLEM: The trigger action is rough.

SOLUTION:

1. The needle is bent.
2. The paint gun needs cleaned.

PROBLEM: Paint bubbles in the color cup.

SOLUTION:

The paint gun is clogged.

PROBLEM: The paint sprays out grainy.

SOLUTION:

The paint is too thick. Gradually thin the paint using the proper solution.

PROBLEM: Splattering.

SOLUTION:

This is caused by letting the tip snap back into place. Always release the trigger gently.