

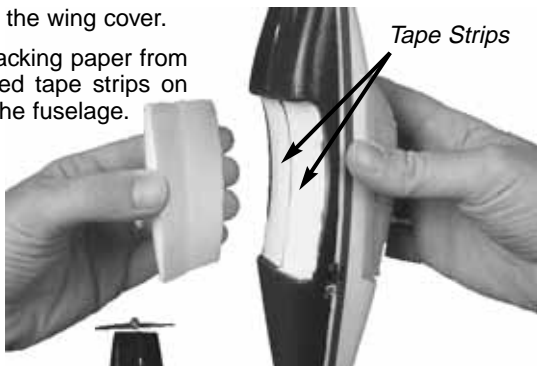
# ASSEMBLY OF YOUR ELECTRIC FREE-FLIGHT SKY VOYAGER

**WARNING:** Read instructions carefully! Improper use of this product may result in personal injury or damage to the public.

**WARNING:** Choking hazard—small parts. Do not allow children under age 3 to play with the Sky Voyager. This model contains small parts which could accidentally be swallowed and cause suffocation. Use with adult supervision.

## ① INSTALL THE MAIN WING

- Gently remove the wing cover.
- Remove the backing paper from the double-sided tape strips on the bottom of the fuselage.



- Carefully line the wings up so that the seam will run along the center of the fuselage and control surfaces are towards the tail as shown. Gently press the wings in place.

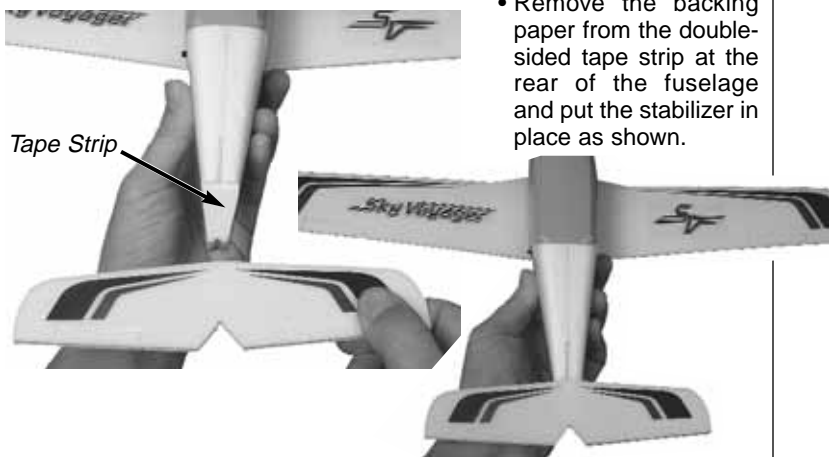
- Remove the backing paper from the double-sided tape strips on the wing cover and gently press it back in place on the bottom of the fuselage.

**Note:** The front edge of the wing cover is thicker and can be identified by the double-sided tape.



## ② INSTALL THE STABILIZER & RUDDER

- Remove the backing paper from the double-sided tape strip at the rear of the fuselage and put the stabilizer in place as shown.



- Locate the two (2) strips of tape in the accessory bag. Press-fit the vertical fin in place and secure it to the fuselage by putting a strip of tape on either side of the rudder as shown.



**FLYZONE™**  
by **Hobbico™**

**Sky Voyager™**

HCAA0313



Replacement Parts  
HCAA3281 Propeller (2)

Requires 4 "AA"  
Alkaline batteries  
(Not included)

## ③ PREPARE THE CHARGING UNIT

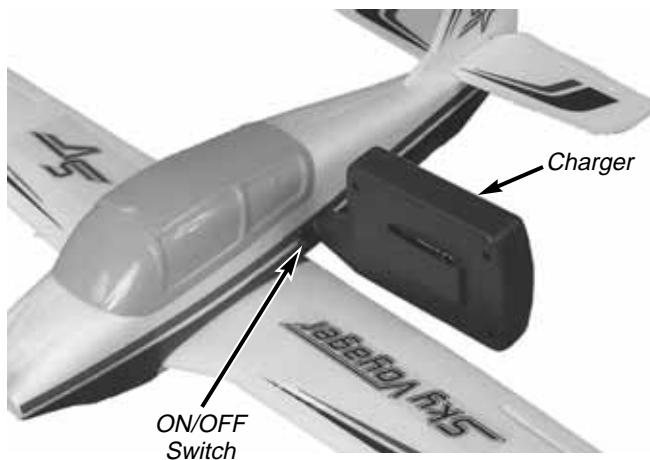
- Using a small Philips head screwdriver, loosen the battery door screw and carefully remove the battery door from the charger unit.
- Install 4 fresh "AA" Alkaline batteries into the charger. Make sure that the (+) positive and (-) negative poles match up correctly with the diagram molded inside the battery compartment.

**NOTE:** Do not use rechargeable (Nickel Cadmium) batteries. Do not mix old and new batteries. Do not mix Alkaline, standard (Carbon Zinc), or rechargeable (Nickel Cadmium) batteries.

- Carefully replace the battery door on the charger and retighten the screw.

## ④ CHARGING INSTRUCTIONS

*Before charging your Sky Voyager, be sure that the ON/OFF switch is in the "OFF" position!*



- Insert the charger into the charge socket located on the side of the fuselage, next to the ON/OFF switch. The charging unit will fit only one way so match the tab on charger with the notch on the charge socket.
- Press and hold the button on the charger to charge the airplane. On the first charge, only charge the Sky Voyager for 15 seconds. For longer flights, you may increase the charge time up to 60 seconds. Release the button to stop charging.
- When charging is complete, remove the charger from the Sky Voyager.

**NOTE:** Never charge the Sky Voyager for more than 60 seconds! Charging for more than the suggested time may result in damage to the plane's internal battery pack or to the charging unit.

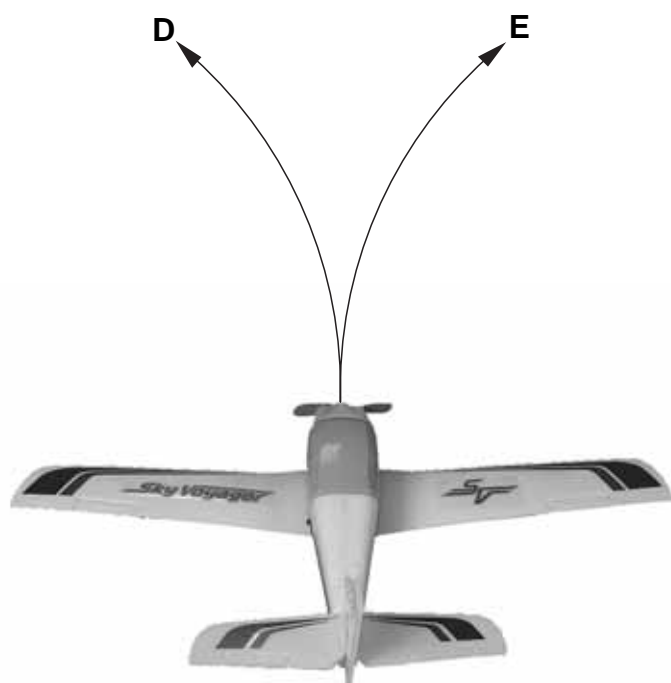
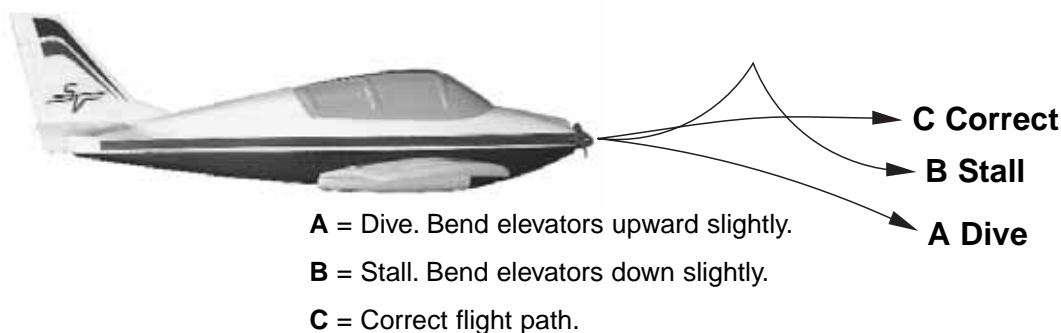
## WARRANTY

Hobbico, Inc. guarantees this kit to be free of defects in both material and workmanship at the date of purchase. This warranty does not cover any component parts damaged by use or modification. In no case shall Hobbico's liability exceed the original cost of the purchased kit. Further, Hobbico reserves the right to change or modify this warranty without notice. In that Hobbico has no control over the final assembly, no liability shall be assumed nor accepted for any damage resulting from the use of the final user-assembled product. By the act of using the user-assembled product, the user accepts all resulting liability. If the buyer is not prepared to accept the liability associated with the use of this product, the buyer is advised to return this kit in new and unused condition to the place of purchase. Please inspect all parts carefully before starting assembly! If any parts are missing, broken, or defective, or if you have any questions regarding assembly or flying of this airplane, please call us at (217) 398-8970, and we'll be glad to help.

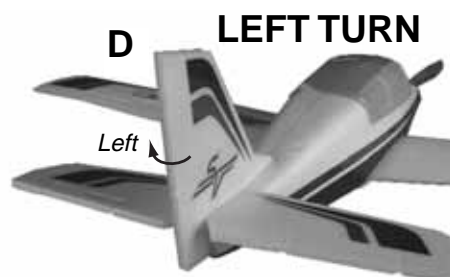
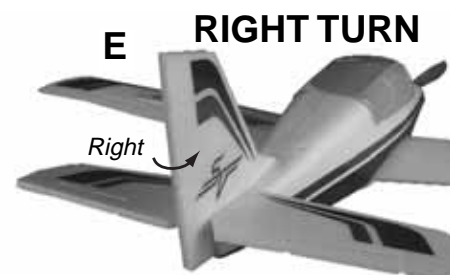
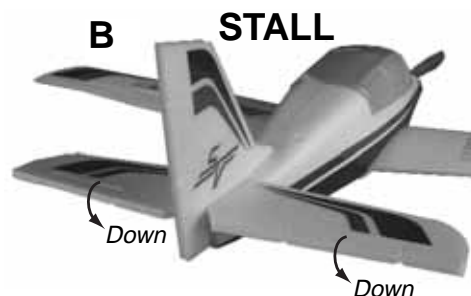
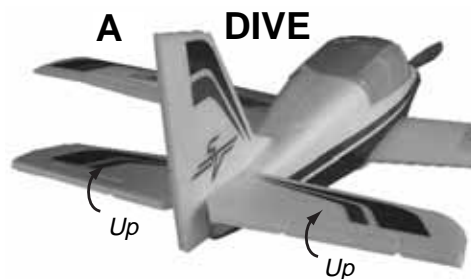
## ADJUSTING FLIGHT CHARACTERISTICS OF THE SKY VOYAGER

Before attempting to fly the Sky Voyager, it will be necessary to make adjustments or "trim" the flight characteristics. The most important thing that determines how well your Sky Voyager flies is how well you have trimmed it.

- With the motor off, grasp the sides of the fuselage and gently toss the Sky Voyager into the wind. It should glide straight ahead and settle gently to the ground.
- If it stalls and crashes adjust the elevator. If it does not turn, bend the rudder slightly to the left or right.



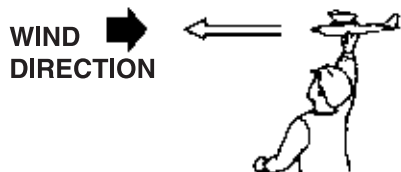
- D = To turn left, bend the rudder slightly to the left.  
E = To turn right, bend the rudder slightly to the right.



## FLYING YOUR ELECTRIC FREE-FLIGHT SKY VOYAGER

### SAFETY RULES

- Always launch the airplane away from people and obstacles.
- Never point the airplane at anyone or anything.
- Always launch skyward.
- Do not launch indoors.



1. Choose an open field that is free of trees, power lines, and other obstacles. Grasp the fuselage of the Sky Voyager firmly and turn the power switch to "ON". **IMPORTANT:** The propeller will begin spinning as soon as the switch is turned "ON"! Be certain that the propeller is unobstructed; failure to do so will damage the prop. Keep hands away from the prop.
2. Launch the Sky Voyager in an overhand motion into the wind, keeping the wings level.

3. The Sky Voyager should climb gently and turn gradually. If it stalls and crashes or does not turn, adjust the elevators and rudder. Refer to "Adjusting Flight Characteristics of the Sky Voyager" for details.

### IMPORTANT THINGS TO REMEMBER WHEN FLYING YOUR SKY VOYAGER

- Do not fly the Sky Voyager in close proximity to houses, streets, trees, and overhead wires.
- Closely inspect your Sky Voyager after every flight and make sure that the wings are not broken and are securely attached to the fuselage.
- Make sure that the tail parts are not cracked or broken.
- Always throw the Sky Voyager into the wind. Do not fly the Sky Voyager if it is too windy.
- Never charge the Sky Voyager for more than 60 seconds. It may cause damage to either the charger or the airplane's internal battery.

**REPAIR:** If the fuselage, wings, or tail are cracked or damaged, glue them together using white glue and reinforce them with cellophane tape. Allow them to dry completely before attempting to fly. **DO NOT USE** super glue as it will damage the foam.



**Attention:** The Sky Voyager is powered by a rechargeable battery. At the end of the battery's useful life, under various state and local laws, it may be illegal to dispose of the battery into the municipal waste system. Check with your local solid waste officials for details in your area regarding recycling options or proper disposal.

**Warning:** This product contains a chemical known to the state of California to cause cancer or other reproductive harm.

Hobbico, Inc.  
Champaign, IL 61826