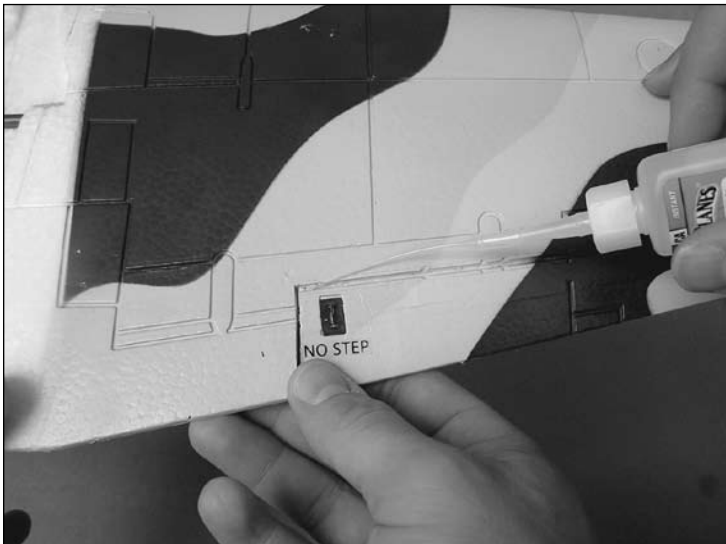


While following forum threads regarding the L-39 Albatross, we've been excited to see that pilots are trying a variety of motor packages to increase its performance. In order to ensure the model's safety and improve future products, we've duplicated many of these set-ups, conducted additional flight testing, and closely observed the effects on the airframe.

The fan and the airframe, we're happy to report, are testing very well. We've also discovered a trick you can use to improve the longevity of the L-39's control surfaces. With this easy step, you can be certain that your jet will survive countless belly landings.

1. With the top of the wing facing you, torque the aileron to the down position. Add a small bead of regular thin CA to the entire seam of the aileron.



2. Repeat step 1 on the bottom seam of the aileron and on the top and bottom seams of the other aileron.