

## Conversion of the Interlink Controller to Mode 1

**IMPORTANT:** If you damage your Interlink controller whilst performing this modification, it will not be covered by the manufacturer's warranty. However, if you follow these instructions with care, you should encounter no issues. Just be sure to keep all removed parts in a safe place until they are required to be re-installed elsewhere in the controller. If, after reading this, you feel unable to perform the modification yourself, it can be returned to the Hobbico Service Department for modification at no cost

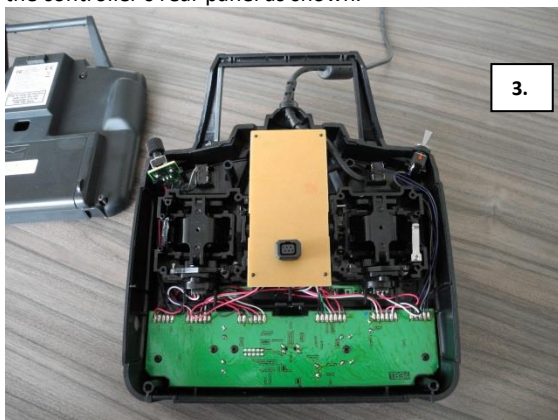


You will require:

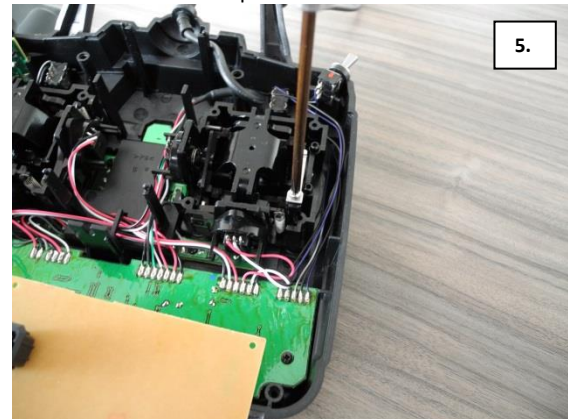
- Phillips Screwdriver PH1
- Tweezers



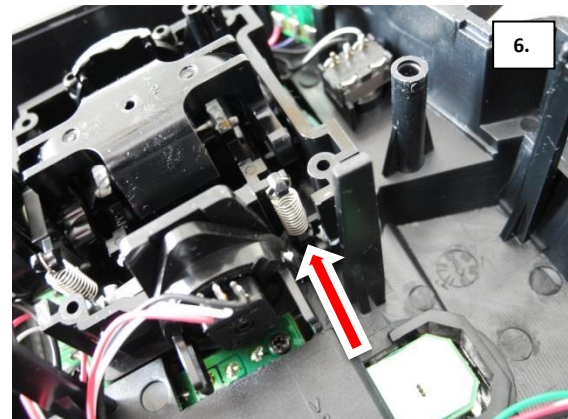
Place the Interlink controller face down (we'd recommend on a cushion or similar to protect the sticks), remove the 4x Philips head screws and carefully remove the controller's rear panel as shown.



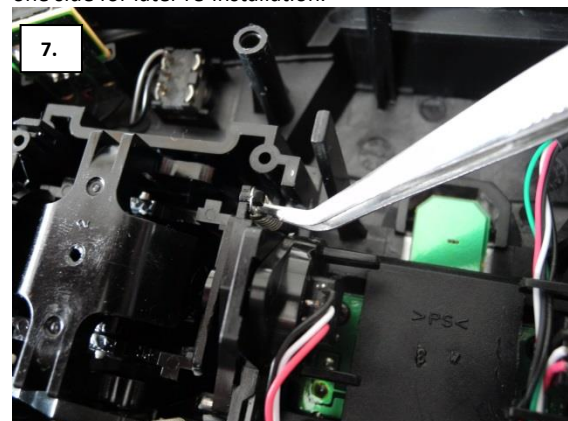
Remove the connector plate



Unscrew and remove the ratchet plate as shown. Place it to one side for later re-installation.

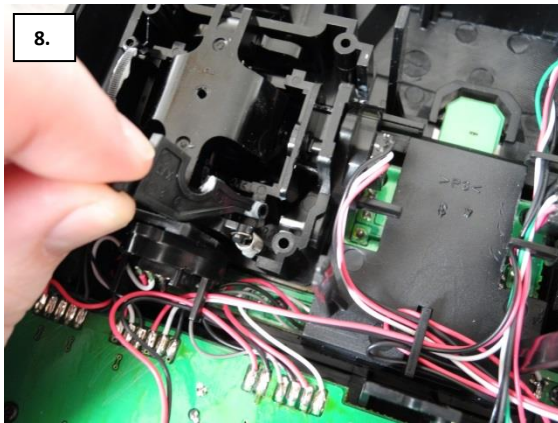


Carefully detach the spring as shown using the tweezers. First unclip from the top and then the bottom. Place it to one side for later re-installation.

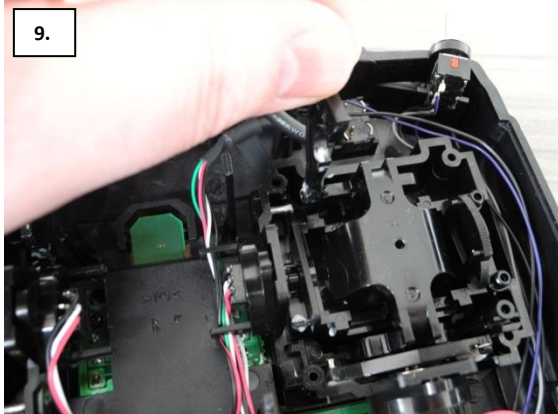




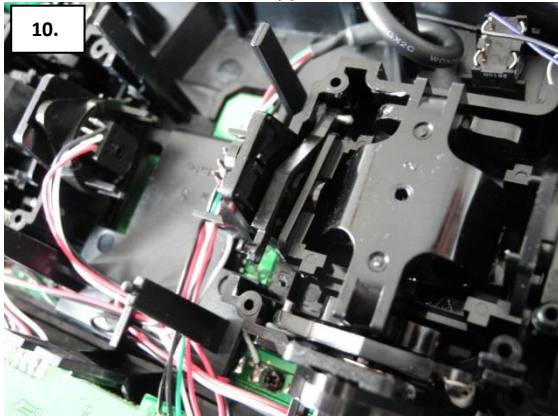
## Conversion of the Interlink Controller to Mode 1



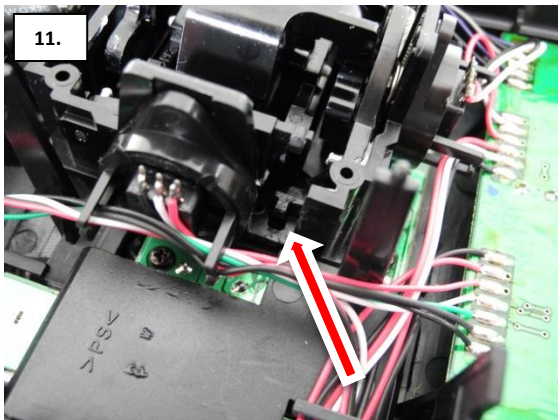
Lift up lever and remove from pivot shaft as shown.



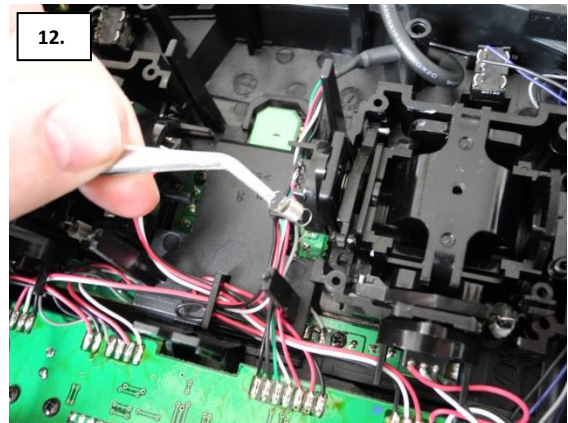
Re-attach the lever on the opposite side as shown.



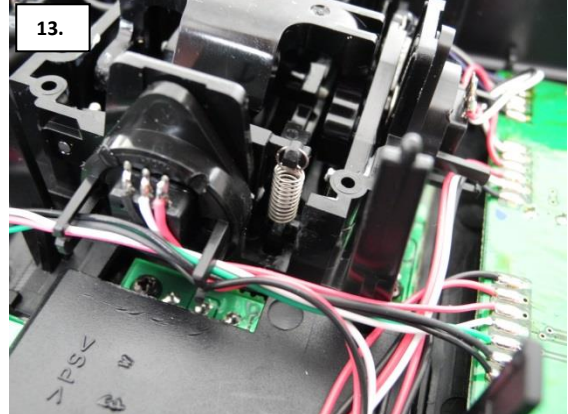
Pivot lever down as shown



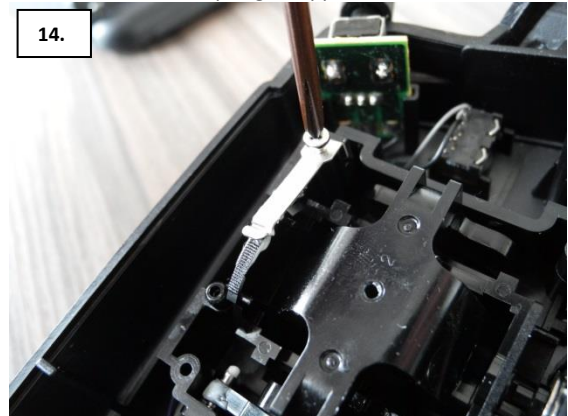
Re-attach spring in reverse order from how it was originally removed.



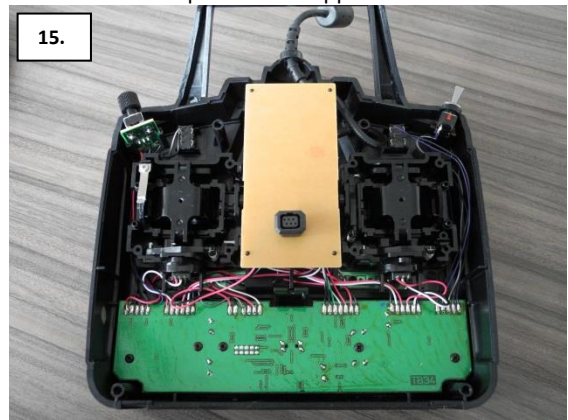
Re-attach spring to lever, lower hook first



Attach other end of spring to upper hook as shown



Screw the ratchet plate on the opposite side as shown



This is how the finished modification should look. Next, carefully replace the controller's rear panel and re-secure with the screws. Finally, select the Mode1 option from the drop down menu which is part of the RealFlight software and the conversion is complete.