

AiRCORE

Power Core Instruction Manual



AIRFRAME AND AIRCORE SYSTEM OPTIONS



- Principle trainer (FLZA3903)
- FW190 (FLZA3905)
- Mustang Cathy II (FLZA3904)
- Mustang Miss America (FLZA3910)
- Spifire (FLZA3907)
- Zero White (FLZA3908)
- Zero Green (FLZA3909)
- Me 109 (FLZA3906)
- More airframes coming!



- Aircore 2S LiPo AC/DC Charger (FLZA6411)



- TTX403 4-Channel SLT 2.4GHz Mini Transmitter (TACJ2403)
- TTX404 4-Channel SLT 2.4GHz Radio System (TACJ2404)
- TTX600 6-Channel SLT 2.4GHz Radio System (TACJ2600)
- TTX650 6-Channel SLT 2.4GHz Computer Transmitter (TACJ2650)

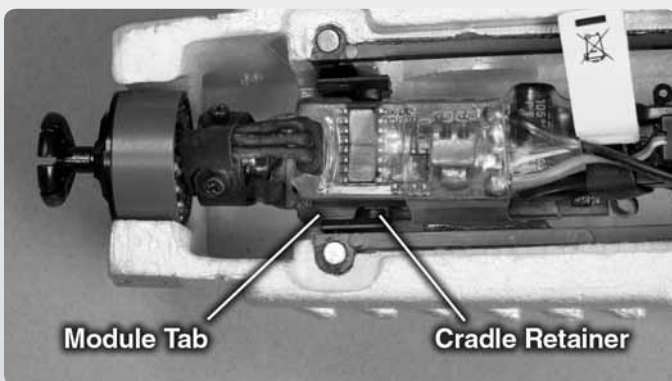
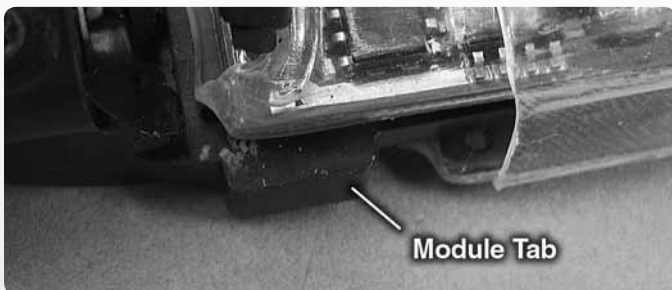
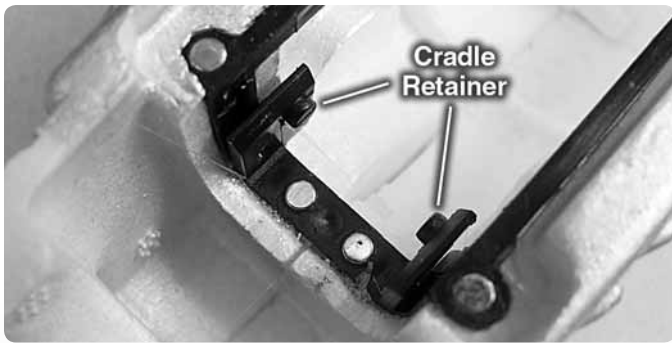
- AnyLink 2.4GHZ Radio Adapter (TACJ2000)



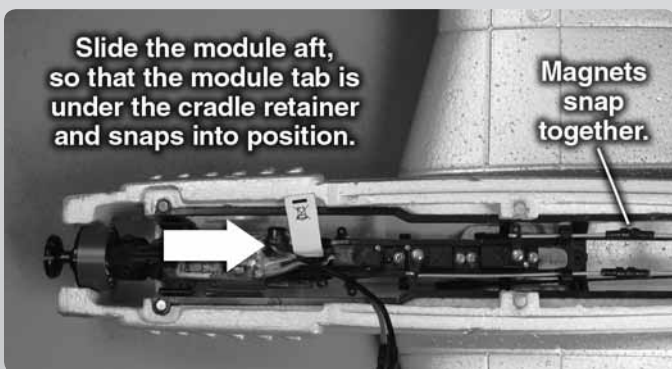
- Aircore LiPo 2S 7.4V 250mAh 20C (FLZA6401)

INSTALLATION OF THE AIRCORE MODULE

Refer to the instructions included with each airframe for removal of the battery hatch.



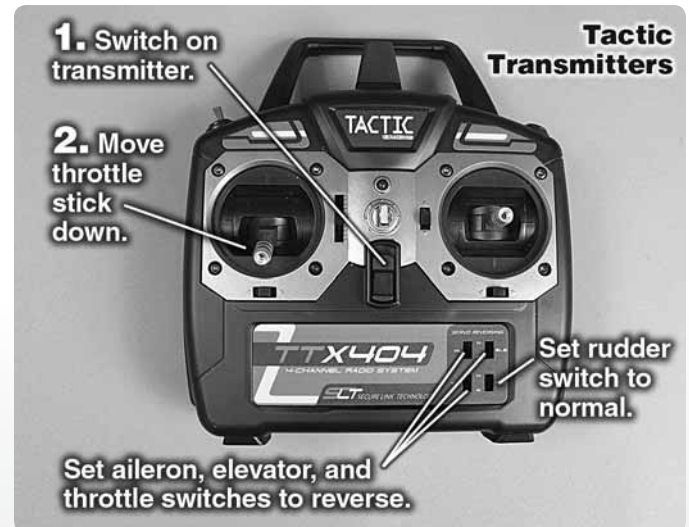
Position the module so that the tab is in front of the cradle retainer.



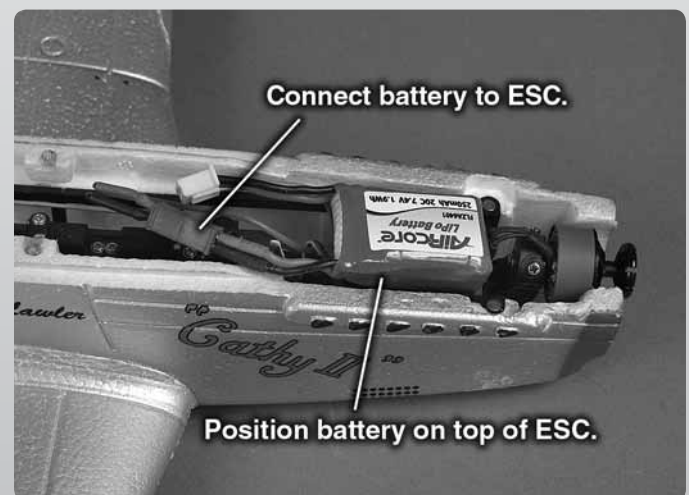
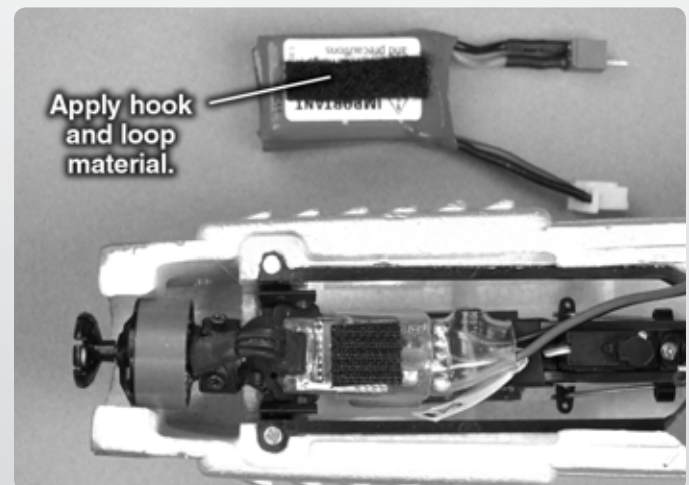
If any of the control surface pushrods do not connect, gently move the control surfaces until the pushrods snap together.

BIND THE TRANSMITTER TO THE PLANE

IMPORTANT: Once the battery is connected to the ESC the motor will start if the throttle stick is moved up.

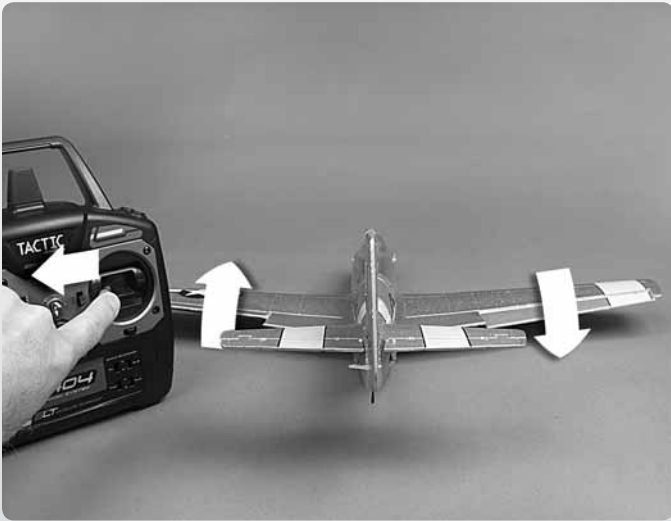
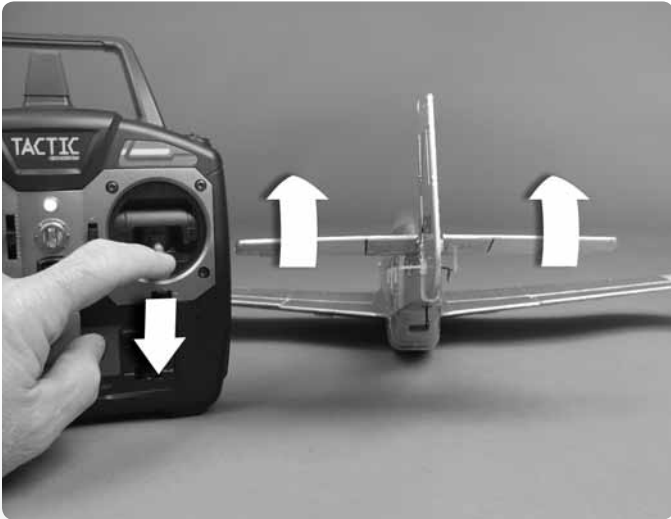


Place the transmitter near the plane.



If the motor starts to beep rapidly, adjust the throttle trim down.

CHECK THE CONTROL SURFACE DIRECTION



CENTER THE CONTROL SURFACES



Because the AirCore Module can be used in more than one plane, we recommend making sure the control surfaces are as close to center as possible on each plane. Make sure the trims are centered on your transmitter.

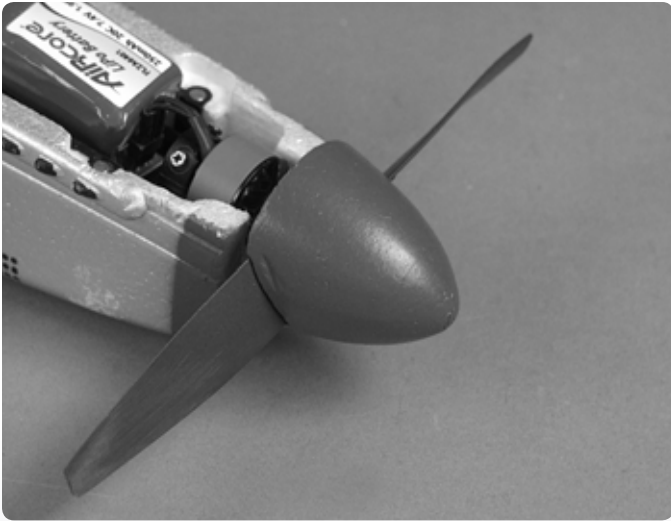
Check that the elevator and rudder are centered on the airplane. If they are not, use needle nose pliers to gently squeeze or spread the "U" bend in the pushrods to center the control surfaces.

INSTALL THE PROPELLER

CAUTION: Do not install the propeller until the plane is ready to fly. Once the battery is connected, the motor will start if the throttle stick is moved up.



Disconnect the battery and snap the propeller onto the propeller adapter.



Slide the spinner on the propeller adapter.

See the instructions included with each airframe for control throws, C.G. and flight recommendations.

REPLACEMENT PARTS

To order replacement parts for the AirCore Module, use the order numbers in the list below. Replacement parts are available only as listed. Replacement parts are not available from Product Support, but can be purchased from hobby shops or mail order/Internet order firms. If you need assistance locating a dealer to purchase parts from, contact:

Product Support Phone: 217-398-0007
 Fax: 217-398-7721

E-mail: productsupport@hobbico.com

Stock No. Description

- FLZA6433 AirCore 6A Electronic Speed Control
- TACL0424 Tactic 4-Channel Micro Receiver
- FLZA6432 AirCore Motor
- FLZA6402 AirCore Prop and Prop Adapter
- TACM0190 Tactic 1.9g Servo
- FLZA6429 AirCore Power Core Cradle
- FLZA6430 AirCore Power Core Frame
- FLZA6431 AirCore Power Pushrod Set