

FOCKE-WULF FW 190

Retractable Landing Gear

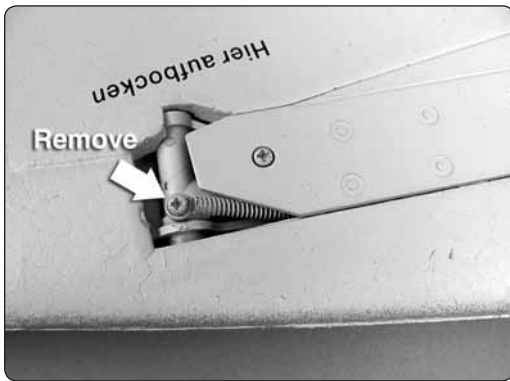
AXA
RECEIVER-READY

RTF
READY-TO-FLY

Tx-R
TRANSMITTER-READY

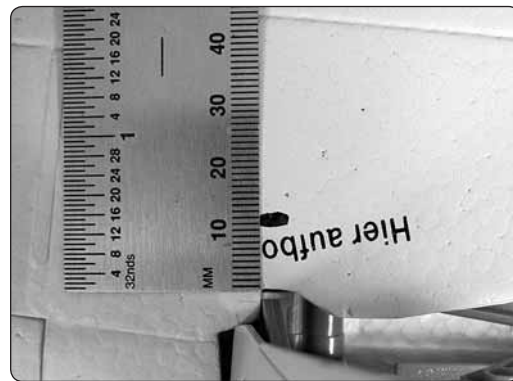


Please follow these instructions to replace the retractable landing gear struts on the Focke-Wulf Fw190.



❑ 1. With the landing gear in the up position, remove the spring screw from the strut.

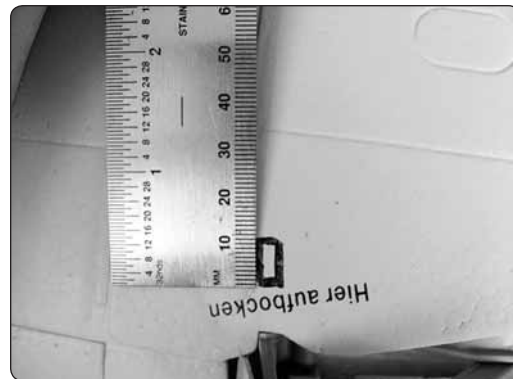
❑ 2. Extend the retractable gear to the fully extended position or landing gear down position.



❑ 5. Measure 12mm (15/32") from the rear of the retract and make a 5mm length mark in the direction of the wing root.



❑ 3. Using a straight edge, mark the position of the strut's hinge pin with a marker.

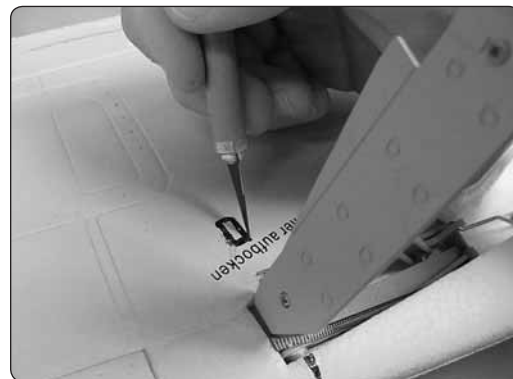


❑ 6. Next, measure 12mm (15/32") toward the trailing edge of the wing from the mark on step #4. Make an additional 5mm length mark in the direction of the wing root.

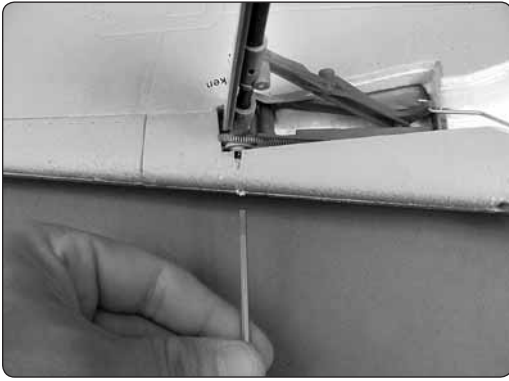


❑ 4. Using a 2.5mm (3/32") drill bit, drill at the leading edge of the wing towards the retract hinge pin in line with the mark made on step #2. Drill to a depth of 14mm, or until the drill bit makes contact with the hinge pin.

❑ 7. Using the marker, draw two lines connecting the two lines drawn on steps 4 and 5.

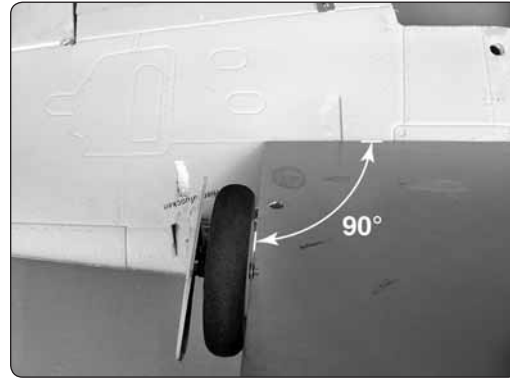


❑ 8. Using a hobby knife, remove the foam material within the rectangular marks to a depth of 5mm. This removed area will allow an exit path for the retract hinge pin.



❑ 9. Place a 3mm hex tool in the hole from the leading edge of the wing. **MAKE SURE THE PUNCH IS ALIGNED WITH THE BRASS HINGE PIN BEFORE APPLYING PRESSURE!**

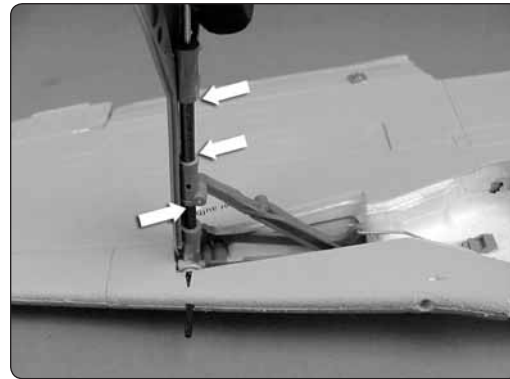
❑ 16. Secure the strut arm screw to the replacement strut and secure the spring screw to the replacement strut.



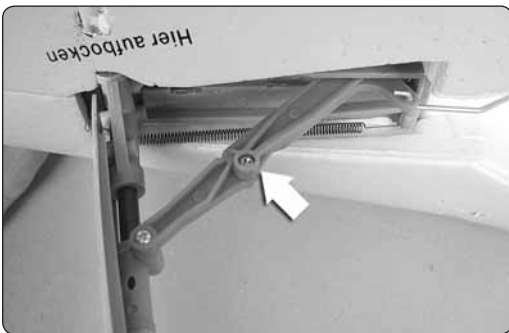
❑ 17. Use a builder's triangle to set the toe-in of the wheel by lining the builder's triangle with the mid-line of the wing.



❑ 10. Using the punch, gently push the hinge pin out of the hinge and into the exit area created on steps 4-7. Using pliers, remove the brass hinge pin.



❑ 18. Once satisfied with the toe-in of the wheel, apply CA to the strut in the areas shown.



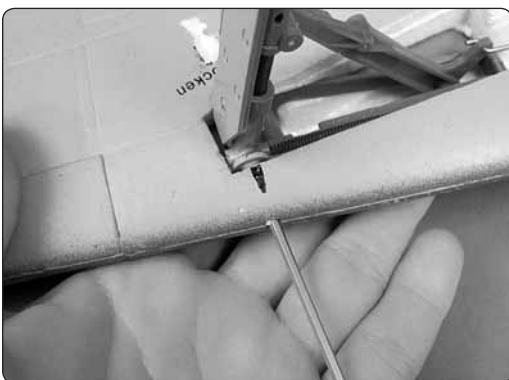
❑ 11. Remove the strut arm screw from the strut.



❑ 19. Insert the 3x30mm carbon fiber tube into the hole made at the leading edge. Apply foam safe CA to the area around the carbon fiber tube.

❑ 13. Remove the replacement strut from HCAA6428 by removing the strut arm screw and hinge pin.

❑ 14. Place the replacement strut in the retract assembly in your wing.



❑ 15. Using the 3mm hex tool, push the brass hinge pin into the hinge through the hole in the leading edge of the wing, securing the replacement strut.

❑ 20. Apply RC-56 glue to fill the exit area for the hinge pin.

HOBIBICO[®]