

Seawind[®]

RETRACT SERVO REPLACEMENT 36g RETRACT SERVO (FLZA6580)

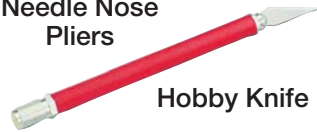
TOOLS REQUIRED



Single Edge
Razor Blade



Needle Nose
Pliers



Hobby Knife



Silicone
Glue



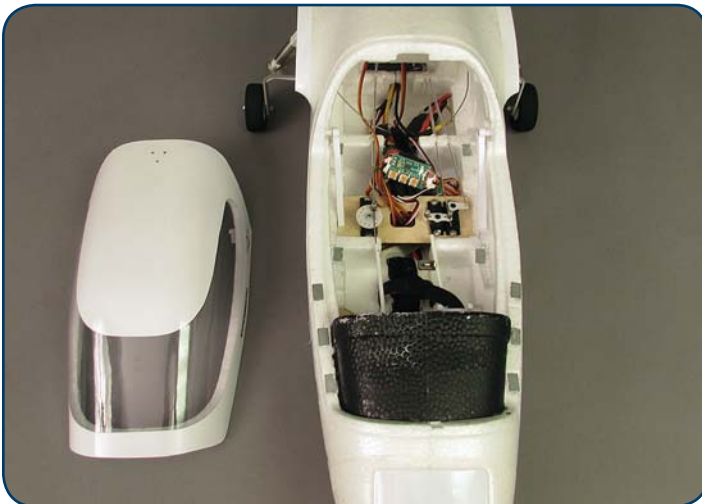
6" Ruler



#1 Phillips Head
Screwdriver



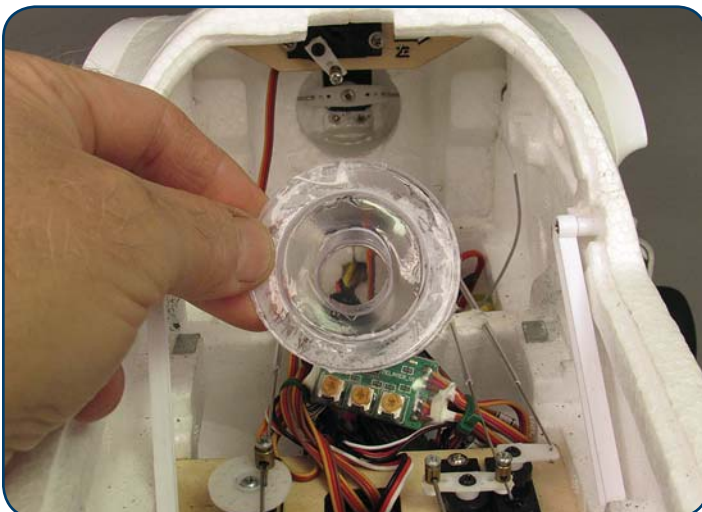
Thin CA
(optional)



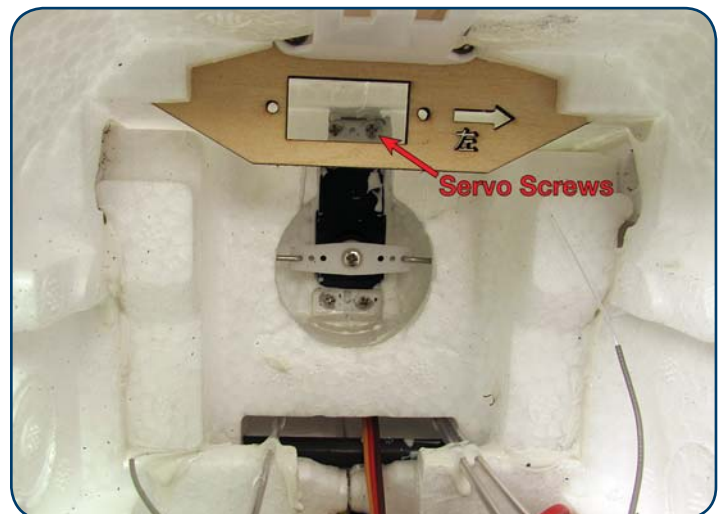
1. Remove the hatch by removing the three screws in the top of the hatch and the screws holding the hatch to the arms.



3. Remove the flap servo.



2. Carefully remove the clear cover. The cover is glued on with a silicone glue. Use a single edge razor blade to cut the glue behind the cover.



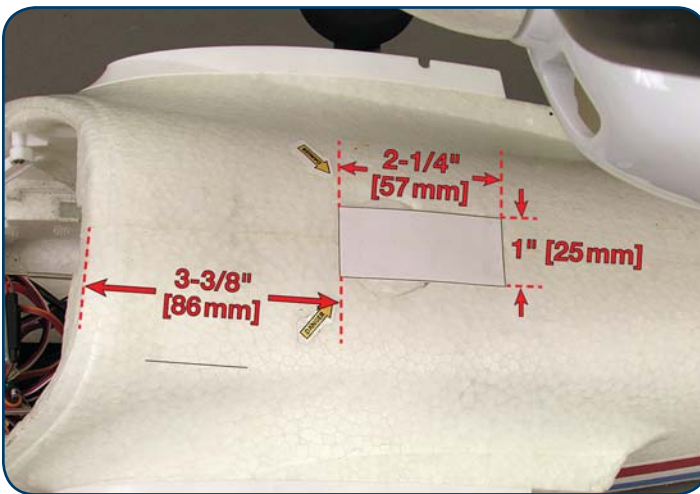
4. Use a sharp hobby knife to cut and remove the foam over the top of the servo to expose the servo screws.



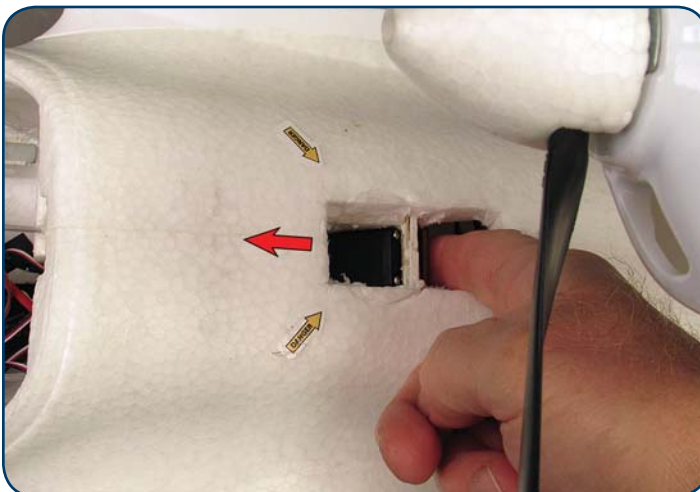
5. Remove the servo arm screw. Use a needle nose pliers to loosen the screw in the pushrod connector on the retract. Remove the servo arm and retract pushrods.

6. Remove the four retract servo screws.

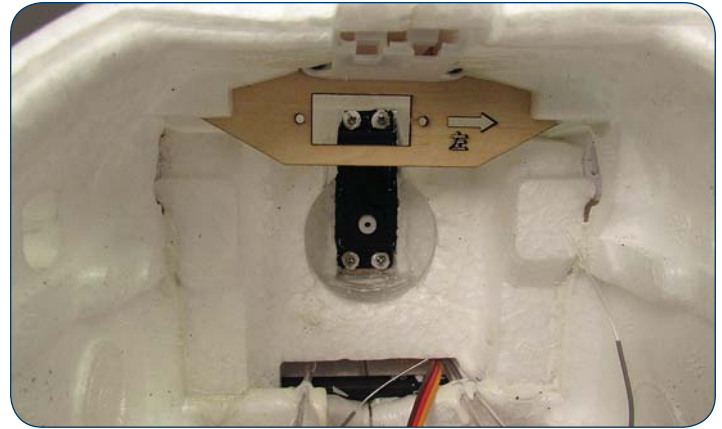
7. Using a sharp hobby knife, cut the silicone around the edge of the retract servo.



8. Mark and cut a hole in the top of the fuselage.

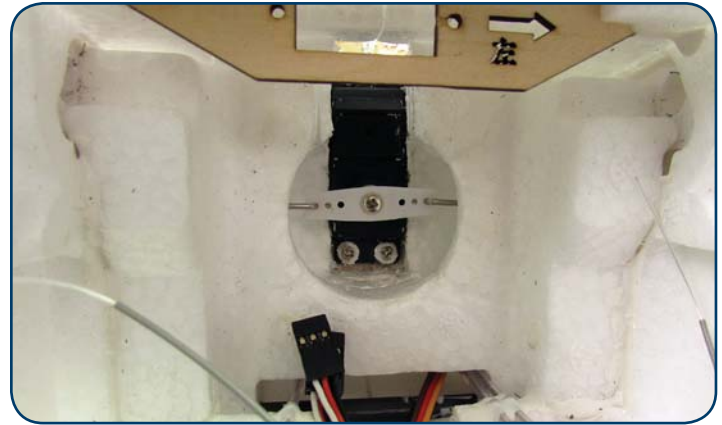


9. Remove the servo from the servo tray. The fit of the servo in the servo tray is tight. You will need to push on the bottom of the servo to get it out.



10. Install the new servo by reversing the removal procedure. We recommend applying a bead of silicone glue around the edge of the servo.

11. Install the retract servo pushrods in the pushrod connectors. Tighten the connectors enough to hold the pushrods.



12. **WARNING:** Remove the propeller. Switch on the transmitter and connect a battery into the ESC. Set the switch so the retracts are down. Install the servo arm so that it is close to straight across. Loosen the pushrod connectors and position the retracts in the locked down position. Retighten the pushrod connectors.

13. Glue in the foam pieces that have been cut out in front of the retract servo and in the top of the fuselage. Regular CA or silicone glue can be used.

14. Reinstall the flap servo and connect it to the receiver.

15. Glue the clear cover to the front of the retract servo opening.