

FUJI IMVAC™

Operator's Manual for BT-24



SPECIFICATIONS

Displacement:	1.46 cu in [24cc]
Horsepower:	2.2 hp @ 10,000 rpm
Ignition Style:	CDI Automatic Timing Module™
RPM:	1,200 – 9,500 rpm
Fuel:	Gas/2-cycle engine oil
Weight w/Muffler:	3.4lb [1.55 kg]

Fuji-Imvac is not related to the original Fuji Engines sold by Mecoa.

**Manufactured by FUJI-IMVAC INC.
YOKOHAMA, 235-0005 JAPAN**
**Worldwide Distributor (except Japan): Hobbico, Inc.
Champaign, IL 61826 USA**
www.fuji-imvac.com

SAFETY TIPS AND WARNINGS

- Always use a balanced spinner and a balanced prop. An unbalanced spinner and prop combination will cause high levels of vibration and may cause the propeller shaft to break.
- Always use a lightweight spinner on your engine. Lightweight spinners are considered to be those with a cone wall of 1mm or less. Heavy spinners could cause the propeller shaft to break.
- Securely tighten the spinner and prop on the engine to prevent it from being thrown off the engine while running.
- Never use a prop that has hit the ground. Even though it may look good from the outside, it may be cracked on the inside which may cause it to disintegrate while in use. Do not use a nicked, cracked or split propeller.
- Keep foreign objects away from the propeller. Make sure that nothing can be “sucked in” by the propeller. Never start the engine on loose gravel or sand.
- Keep onlookers away from the running engine, especially small children.

- Do not attempt to stop the engine by throwing anything into the path of the propeller.
- Make sure the fuel line is well-secured to the engine and to the fuel tank so that it won't come off in flight.
- Do not use silicone fuel line because it will be attacked by the fuel. Use vinyl or neoprene rubber fuel line.
- Always secure the fuel line away from the cylinder head. The engine's heat can damage the fuel line.
- Never touch the engine after a run. The engine will be hot and it may burn you.
- Before transporting your model, remove all the fuel from the fuel tank and fuel lines.
- Always use high-quality oil intended for 2-stroke engines.
- Use only low-octane, alcohol-free gasoline. The carburetor diaphragm will gradually deteriorate if you use gasoline with alcohol (ethanol, gasohol, etc.). You will need to replace the diaphragm in about 80 hours of operation if you use gasoline with alcohol.
- Muffler pressure to the fuel tank is not required.
- Do not install your throttle servo or kill switch servo inside the engine compartment. Doing so could cause radio interference. Install all electronic radio devices at least 305mm [12"] away from the engine. The throttle pushrod should be non-metallic.
- If the engine is not to be used for more than a month, drain the fuel tank and remove any fuel from inside the carburetor. Do this by running the engine at idle until it quits by running out of fuel. Keeping gasoline inside the carburetor over an extended period of time will damage the diaphragm valve and clog passages inside the carburetor.
- Because the carburetor is more complicated than those used in glow engines, keep the fuel clean by using a fuel filter. Use a filter intended to be used with gasoline engines. Metal filters intended for glow engines are too coarse and will not screen out finer particles. Always filter your fuel by using an appropriate filter before putting it into the airplane's fuel tank.
- If you intend to run this engine on an engine stand, or on any other rigid mount, use rubber mounts. The crankcase and other parts of the engine may crack if you do not provide some kind of vibration absorption mechanism. A rubber mount is not necessary if the engine is mounted on a model airplane.
- Do not operate the engine in a closed room or where ventilation is not adequate.
- Gasoline is extremely flammable. Keep it away from an open flame, excessive heat or sources of sparks. Do not smoke near the engine or the fuel tank.
- This engine was designed for use in a model aircraft. Do not attempt to use it for any other purpose.
- Always install a kill switch that can be operated both manually and with the R/C transmitter.

PARTS LIST

BT-24 Engine w/Muffler	(4) 5mm x 22mm SHCS with Lock
Propeller Flange with Propeller Washer	Washers and Flat Washers
Propeller Bolt	Spark Plug Wrench
Friction Ring	4mm Allen Wrench
(4) 5mm x 12mm SHCS with Lock	
Washers and Flat Washers	

FEATURES

- CDI (Capacitive Discharge Ignition) for simple operation.
- An optional Digital Tachometer (FJIP9920) is available to monitor rpm and ignition battery voltage.

SPARK PLUG

The recommended spark plug is a Champion RCJ-6Y or 7Y. To avoid improper operation or possible engine damage, do not use any other type of spark plugs. The plug gap should be 0.4mm to 0.6mm [0.016" to 0.024"]. If the plug gap is incorrect, adjust it with a spark plug gapping tool, wash it with gasoline and allow it to dry completely before you reinstall the plug in the engine.

Note: If you want to check if the spark plug works, remove the spark plug from the engine, connect it to the coil and make sure the metallic threaded end of the spark plug touches the engine. Spin the propeller rapidly through top dead center and check for a spark. This procedure only works in a dark room as there is too much light outside to see the spark.

The various spark plug manufacturers have much information on their web sites regarding spark plug performance and health. For more information, check:

<http://www.championsparkplugs.com/sparkplug411.asp>

PROPELLER

Always use a well-balanced, high-quality propeller.

The recommended propellers are:

High Performance Wood Prop:	16" x 10" 18" x 8"
Carbon Prop:	16" x 10"

OIL

Fuji-Imvac has developed a special oil, Super Lube Oil (FJIP9910 – 250cc), to work with their engines. This oil is of extremely high quality and it has exceptional lubricating properties. This oil can be mixed with gasoline at much higher ratios than other engine oils which allows the engine to develop more horsepower and last longer. It is recommended that you use Fuji-Imvac oil with all your Fuji-Imvac engines. Break-in procedures are slightly different than those when using standard oils. Please refer to the table below for oil contents. Fuji-Imvac Oil is available from your Fuji-Imvac distributor or hobby shop.

- Break-in (Stage 1): 1 gallon of gasoline with 50:1 (2%) oil content ratio.

- Break-in (Stage 2): 1 gallon of gasoline with 100:1 (1%) oil content.
- Normal running: In un-cowled or well-cooled installations 150:1 (0.65%) oil content.
- In-cowl or poorly cooled installations 100:1 (1%) oil content.
- Do not try to use these engine oil ratios with any other brand of oil other than the Fuji-Imvac oil.
- Do not use the Fuji-Imvac oil with any other brand of engines.
- If you have been running the engine on other oil and wish to switch to Fuji-Imvac oil, follow the break-in procedure for Fuji-Imvac Engines oil.

If Fuji-Imvac oil is not available, or if you prefer to use a different brand of oil, use the standard fuel/oil ratios as shown below. Never experiment with cheap oil or with obscure brand names. Be certain to select only high-quality oil that is intended for use in gasoline R/C model airplane engines.

- Break-in: 1 gallon of gasoline with 25:1 (4%) oil content.
- Normal running: 40:1 (2.5%) oil content.

PREPARE THE ENGINE

1. Check to see that all screws and bolts are tight. Check carefully for any cracks, broken or missing parts. Tighten or replace before proceeding.



2. Install the prop shaft on the flywheel using two 5mm x 22mm [3/16" x 7/8"] SHCS with lock washers and flat washers. Use thread-locking compound on the screws.

3. Connect a kill switch to the ignition control module. It is recommended to install a manual switch and a servo-operated switch. This can be accomplished using two receiver ON/OFF switches.

INSTALLING THE FUJI-IMVAC BT-24 ON YOUR AIRPLANE

Note: The Fuji-Imvac BT-24 must be installed on a 9mm [3/8"] lite-ply firewall or on a 6.4mm [1/4"] birch ply firewall. The firewall must be securely glued to the airplane. Use triangle stock and pin the firewall with hardwood dowels to reinforce the firewall glue joints. **Never** install the Fuji-Imvac BT-24 onto a firewall thinner than specified because it may fail due to the power of the engine.

1. Use the supplied mounting template (on the back cover of this manual) to drill the engine mounting bolt holes and the necessary clearance hole on the firewall.
2. Install the engine on the firewall using four 6.4mm x 19mm **or** [10-24" x 3/4"] socket head cap screws, four #10 flat or lock washers and four #10 blind nuts. Use some thread-locking compound, such as Great Planes® Pro™ Threadlocker.
3. Install a manual and radio-operated kill switch (GPMG2150). Install a kill switch servo at least 305mm [12"] away from the engine.
4. Install the throttle servo at least 305mm [12"] away from the engine. Make sure that you get the carburetor's full range of rotation with your servo travel.
5. Install the ignition module securely in the airplane forward area. It is recommended that a thin piece of foam rubber be placed between the module and the mounting surface and that rubber bands are used to hold the module in place. 4mm [5/32"] screws and washers can also be used to secure it in place, but soft mounting the module is always the best choice.
6. Secure all connections with heat-shrink tubing.
7. Cut all necessary clearance and cooling holes in the cowl.
8. Make sure the cowl is secured to the airplane and that the spinner to cowl clearance is at least 3mm [1/8"].

BREAK IN THE ENGINE

- The break-in procedures for your engine will vary depending on the type of engine oil you will use. Please refer to the "Oil" section for fuel/oil mixture ratios and break-in times.
- Do not adjust the high-speed needle on the carburetor to break in the engine. If you do so, carbon will accumulate in the spark plug and that will make ignition difficult.
- Do not run at full power for extended periods of time while breaking in your engine.
- Make sure that the engine has adequate cooling. While breaking in, the engine may run at slightly higher temperatures.
- If you wish to do so, you can break in your Fuji-Imvac BT-24 while flying your airplane. Just make sure you observe all recommendations above.

STARTING PROCEDURES

There are four recommended ways to start the Fuji-Imvac BT-24:

A. Manual Starting:

Note: Use a thick glove to protect your hand while hand-starting the Fuji-Imvac BT-24.

1. The propeller should be installed on the prop spacer so that it is comfortable for you to flip it through compression. You also need to position it in a way that when you flip the propeller, the magnets are 20° clockwise from the magnet pick up.
2. Have someone help you hold the airplane while you start the engine.
3. Make sure the ignition is OFF, close the choke on the carburetor and open the throttle slightly from the idle position.
4. Rotate the propeller slowly about 10 to 20 times (more in winter) until fuel begins to be drawn into the carburetor. Another way to prime the engine is to rotate the prop clockwise from bottom dead center to top dead center (compression) and then counterclockwise back to bottom dead center repeatedly.
5. Switch the ignition to ON.
6. Flip the propeller clockwise several times briskly.
7. After you hear some initial firing sounds, move the choke lever to the OPEN position.
8. Set the throttle to a high idle. Set the prop so that the magnets are 20° clockwise from the magnet pick up when viewed from the front.
9. Flip the prop through compression rapidly. If this is done properly, the engine will start between the first and the eighth flip of the prop. During our testing, starting took an average of 3-4 flips.
10. After starting, let the engine idle for two to three minutes. Open and close the throttle slowly until the engine runs smoothly at idle and at full throttle. Acceleration should also be smooth.
11. If your engine does not start, repeat the procedure.

B. Electric Starter Starting:

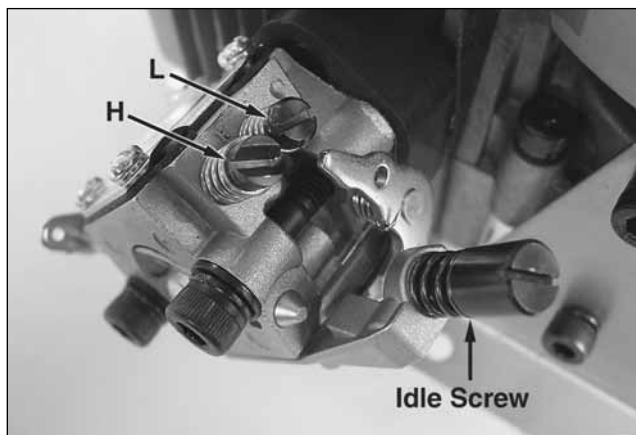
1. Make sure you use a good-quality, lightweight aluminum spinner.
2. Have someone help you hold the airplane while you start it.
3. Make sure the ignition is OFF, close the choke plate on the carburetor and open the throttle slightly from the idle position.
4. Use your electric starter to turn the engine over for several seconds.
5. Switch the ignition to ON and open the choke.
6. Set the throttle to high idle and use your electric starter to turn over the engine until it starts.
7. After starting, let the engine idle for two to three minutes. Open and close the throttle slowly until the engine runs smoothly at idle and at full throttle. Acceleration should also be smooth.
8. If your engine does not start, repeat the procedure.

C. Spring Starting (Optional):

1. Have someone help you hold the airplane while you start it.
2. With the ignition OFF, close the choke plate on the carburetor and open the throttle slightly from the idle position.
3. Rotate the propeller slowly about 10 to 20 times (more in winter) until fuel begins to be drawn into the carburetor. Another way to prime the engine is to rotate the prop clockwise from bottom dead center to top dead center (compression) and then counterclockwise back to bottom dead center repeatedly.
4. Turn the ignition switch to the ON position.
5. Hold the propeller, turn it 360° clockwise (one full turn) and let it go (move hand quickly away from the propeller arc).
6. After you hear some initial firing sounds, move the choke to the OPEN position.
7. Repeat Step 5 until your engine starts.

ENGINE ADJUSTMENTS

- Always make high- and low-speed needle adjustments with the engine shut off. Also make sure the ignition is OFF.
- Adjust the needle marked “H” for high-speed rpm. Adjust the needle marked “L” for low-speed rpm.



A. Normal high- and low-speed needle settings:

It is not necessary to change the needle settings if the engine runs smoothly. Normally only the “H” needle will need adjustment from time to time and only by a small amount.

H: Open the needle 3/4 of a turn from the closed position ($\pm 1/4$ of a turn in winter).

L: Open the needle 1-3/8 turns from the closed position ($\pm 1/4$ of a turn in winter).

Only adjust the high- and low-speed needle within the above range.

B. Idle adjustment:

Note: Do not confuse the idle screw with the low-speed needle “L”. The idle screw physically adjusts how much the carburetor valve can close. The low-speed needle “L” adjusts the gasoline-to-air mixture when the engine is running at low rpm. If your engine appears to work correctly except that the low rpm are not as low as you want them to be, then adjust the idle screw. If your engine behaves erratically at low rpm, then adjust the low-speed needle “L”. When adjusting, turn the screw about 1/8 of a turn each time. A dirty plug will make it difficult to adjust the idle rpm. Follow the recommended procedures if any of the following happens:

Problem:

1. The engine hesitates when accelerated rapidly.
2. The rpm increases at idling.
3. The engine stops when the throttle is moved from high to low.

Solution:

Your low-speed needle “L” is too lean. Open it up about 1/8 of a turn and try again.

Problem:

The idle is not steady.

Solution:

Your low-speed needle “L” valve is too rich. Close it 1/8 of a turn and try again.

C. High-speed Adjustment:

The high-speed rpm and transition performance is adjusted with the high-speed “H” needle valve. When adjusting, turn the screw about 1/8 of a turn each time. The position of the “H” needle will vary according to air temperature and field elevation. If your engine is running smoothly, then do not adjust this needle valve. Follow the recommended procedures if any of the following happens:

Problem:

1. Engine stops at full throttle.
2. Engine hesitates when accelerated rapidly.
3. The engine will not come up to full rpm at full throttle.

Solution:

Your high-speed needle valve “H” is too lean. Open it up 1/8 of a turn and try again.

Problem:

1. Your engine does not reach full rpm.
2. Carbon build-ups appear consistently on your spark plug.

Solution:

Your high-speed needle valve “H” is too rich. Close it up 1/8 turn and try again.

3-Year Limited Warranty For USA and Canada

Fuji-Imvac warrants this product to be free from defects in materials and workmanship for a period of three (3) years from the date of purchase. During that period, Fuji-Imvac will, at its option, repair or replace without service charge any product deemed defective due to those causes. You will be required to provide proof of purchase date (receipt or invoice).

- This warranty does not cover damage caused by crash, abuse, misuse, alteration or accident. Damage caused by customer disassembly, tampering, use of substandard fuel, use of incorrect accessories (spark plug, prop, etc.) or any use of the engine for which it is not specifically intended will automatically void the warranty of the engine. If there is damage resulting from these causes within the stated warranty period, Fuji-Imvac will, at its option, repair or replace it for a service charge not greater than 50% of the current retail list price. Be sure to include your daytime telephone number and e-mail address in case we need to contact you about your repair.
- Under no circumstances will the purchaser be entitled to consequential or incidental damages. This warranty gives you specific legal rights and you may also have other rights, which vary from state to state.
- If you attempt to disassemble or repair this unit yourself, it may void the warranty.

For service on your Fuji-Imvac product, either in or out of warranty, send it post paid and insured to:

Hobby Services
3002 N. Apollo Dr., Suite 1
Champaign, IL 61822 USA
(217) 398-0007
www.hobbyservices.com

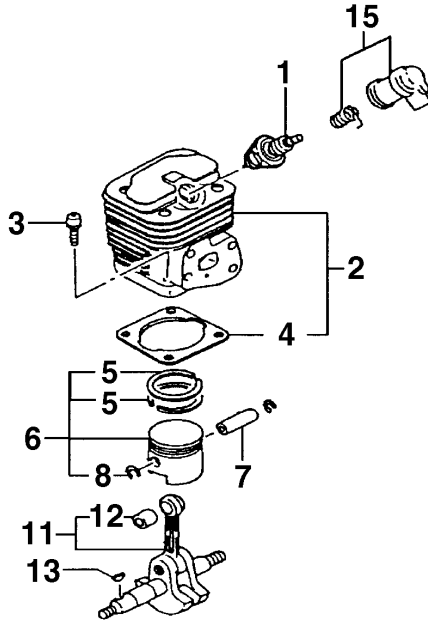
Along with your engine and proof of purchase date, please include a complete written explanation detailing the problem(s). State your name and address clearly. For repairs not covered under warranty, you must specify whether you wish the charges to be billed COD or if you wish to be notified of the charges so you can send a check.

Outside USA and Canada, contact local importer for warranty information.

REPLACEMENT PARTS

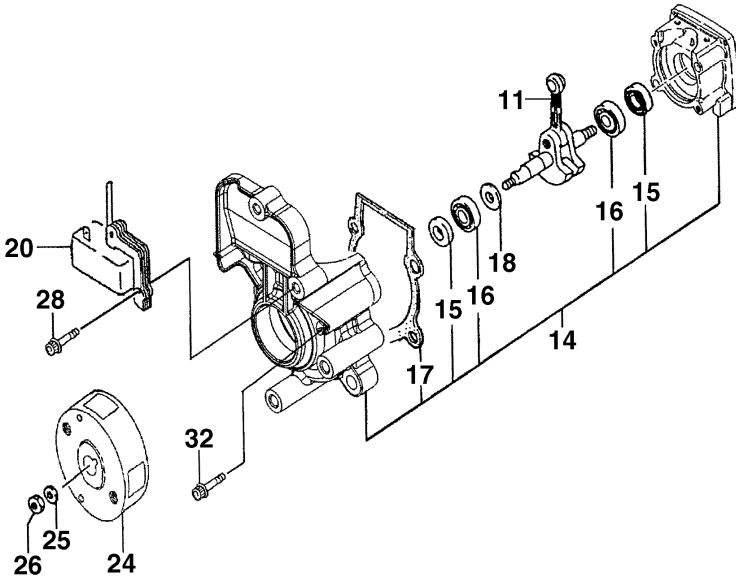
To order replacement parts for the Fuji-Imvac BT-24, use the order numbers in the **Replacement Parts Lists** that follow. Replacement parts are available only as listed. Replacement parts are not available from Product Support, but can be purchased from hobby shops or mail order/Internet order firms. If you need assistance locating a dealer to purchase parts, visit www.greatplanes.com and click on “Where to Buy.”

CYLINDER/PISTON/CRANKSHAFT



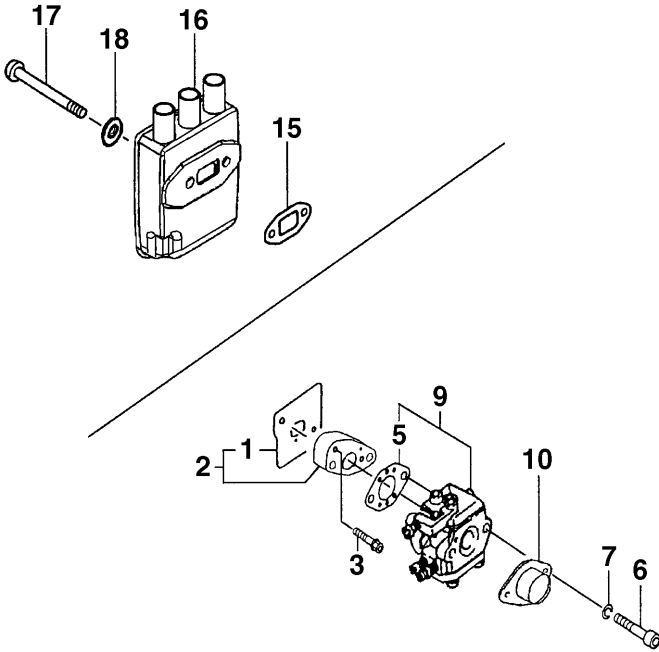
Key #	Description	Stock #
1	Spark Plug RCJ-6Y.....	FJIG7470
2	Cylinder Set.....	FJIG4379
3	Hex Bolt 5x18mm/S (4).....	FJIG8290
4	Cylinder Gasket.....	FJIG4291
5	Piston Ring (2).....	FJIG6635
6	Piston Set.....	FJIG5361
7	Piston Pin.....	FJIG6419
8	Piston Pin Retainer (2).....	FJIG6511
11	Crankshaft Complete.....	FJIG4021
12	Needle Bearing F-810 1.4x8.5mm.....	FJIG6151
13	Woodruff Key 3x13x4.5mm.....	FJIG7660
15	Spark Plug Cap Assembly.....	FJIG7500

CRANKCASE



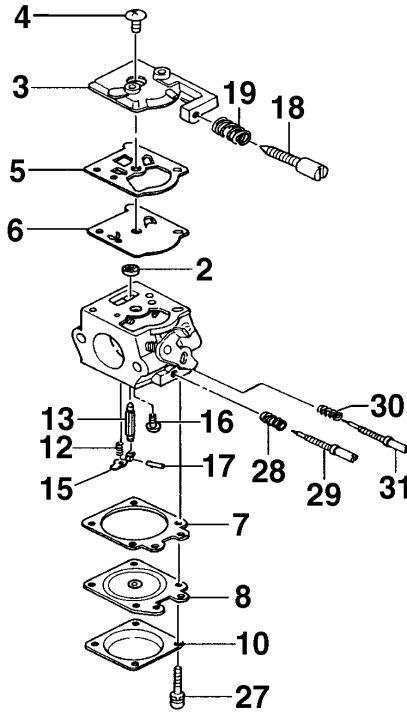
Key #	Description	Stock #
11	Crankshaft Complete	FJIG4021
14	Crankcase Assembly BT-24	FJIG3831
15	Oil Seal TB 12227 (2)	FJIG6300
16	Ball Bearing 6001 C3 (2)	FJIG3080
17	Crankcase Gasket.....	FJIG3921
18	Shim 0.2.....	FJIG7350
18	Shim 0.3.....	FJIG7380
20	Ignition Coil Complete.....	FJIG7313
24	Magneto Rotor 60mm	FJIG5720
25	Washer 8mm.....	FJIG8680
26	Hex Nut 8mm	FJIG8520
28	Hex Bolt 4x18mm/WS (2)	FJIG8220
32	Hex Bolt 5x25mm/S (4).....	FJIG8300

CARBURETOR/MUFFLER



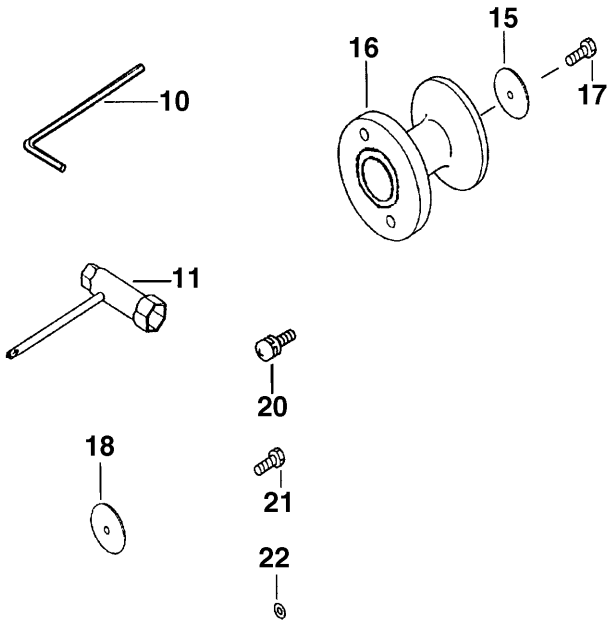
Key #	Description	Stock #
1	Inlet Manifold Gasket	FJIG5481
2	Carburetor Insulator Set.....	FJIG3221
3	Hex Bolt 5x18WS (2)	FJIG8311
5	Carburetor Gasket.....	FJIG3110
6	Hex Bolt 5x45mm (2)	FJIG8325
7	Small Washer 5mm (2)	FJIG8605
9	Carburetor Set WT-817	FJIG3231
10	Funnel Complete.....	FJIG7640
15	Muffler Gasket.....	FJIG5870
16	Muffler Complete.....	FJIG5821
17	Hex Bolt 5x35mm (2)	FJIG8324
18	Washer 5mm (2)	FJIG8750

CARBURETOR



Key #	Description	Stock #
C2	Inlet Screen.....	FJIG5460
C3	Pump Body	FJIG6930
C4	Set Screw.....	FJIG7170
C5	Pump Gasket	FJIG7060
C6	Pump Diaphragm	FJIG7020
C7	Diaphragm Gasket.....	FJIG4610
C8	Metering Diaphragm Complete.....	FJIG5760
C10	Diaphragm Cover	FJIG4520
C12	Valve Spring.....	FJIG8525
C13	Needle Valve	FJIG6240
C15	Valve Hinge.....	FJIG7540
C16	Hinge Pin Set Screw.....	FJIG5130
C17	Hinge Pin	FJIG5100
C18	Idle Adjustment Screw	FJIG5220
C19	Idle Adjustment Spring.....	FJIG5280
C27	Set Screw (4).....	FJIG7161
C28	Low Adjustment Spring.....	FJIG5070
C29	Low Adjustment Screw	FJIG5590
C30	High Adjustment Spring.....	FJIG5040
C31	High Adjustment Screw.....	FJIG5010

MISCELLANEOUS



Key #	Description	Stock #
10	Hex Wrench 4mm	FJIG4920
11	Combination Box Wrench 13x19mm	FJIG3690
15	Clutch Washer B	FJIG6810
16	Propeller Flange 45mm.....	FJIG6720
17	Propeller Fixing Bolt.....	FJIG8110
18	Small Grip Washer 36051	FJIG8530
20	Hex Bolt 4x20mm (4)	FJIG8229
21	Hex Button Screw 6x15mm (2).....	FJIG8401
22	Small Washer 8mm.....	FJIG8402