



Kwik-Pit™ SUPER START RTR™

Assembly & Operating Instructions For DTXP6001
Items Required: 6-cell Battery (DTXC1900), Charger (DTXP4005)

Installation	Operation										
<p>Use the exploded view drawings for reference.</p> <ol style="list-style-type: none"> 1. Remove the screws that attach the stock recoil to the back of the engine. 2. Remove the recoil and one-way bearing from the engine. Note the direction the one-way bearing is installed for proper reinstallation. 3. Install the one-way bearing into the Kwik-Pit™ Super Start RTR spur gear. Note: Be sure the one-way bearing is installed in the same direction it was originally. 4. Place the spur and pinion gears into the mounts on the front section of the gear case. 5. Rotate the adjustable center section of the gear case to the desired position. 6. Align the front, center, and rear sections of the gear case and press them together. Once properly seated, the case will fit together evenly around the entire edge with no gaps. 7. Align the screw holes of the adapter with the original recoil mounting points and install using the included 2.6mm x 12mm hex head screw. 8. Reinstall the engine according to the manufacturer's recommendations. 	<p>Use the exploded view drawings for reference.</p> <ol style="list-style-type: none"> 1. Install a charged 7.2V battery (not included) into the hand held starting unit. 2. Close the battery door and plug in the battery. 3. Place the hex end of the starter shaft into the hand held starting unit. 4. Turn on the radio system and check for proper operation. 5. Install the glow plug igniter. 6. Insert the starter shaft into the back of the engine adapter unit and press the starter switch to activate. Note: Stop the starter if the engine does not start within 10 seconds, or if it becomes more difficult to turn over. If the engine did not start, recheck the needle settings and glow plug, or clear out the flooded engine according to the manufacturer's recommendations and retry. <p>Replacement Parts</p> <table border="0"> <tr><td>Super Start Backplate Set</td><td>DTXP6034</td></tr> <tr><td>Motor, Switch, & Wiring Harness.....</td><td>DTXP6070</td></tr> <tr><td>Starter Shaft w/O-ring.....</td><td>DTXP6071</td></tr> <tr><td>Hand Held Unit Starter Gear Set.....</td><td>DTXP6072</td></tr> <tr><td>Hand Held Starter Unit</td><td>DTXP2023</td></tr> </table>	Super Start Backplate Set	DTXP6034	Motor, Switch, & Wiring Harness.....	DTXP6070	Starter Shaft w/O-ring.....	DTXP6071	Hand Held Unit Starter Gear Set.....	DTXP6072	Hand Held Starter Unit	DTXP2023
Super Start Backplate Set	DTXP6034										
Motor, Switch, & Wiring Harness.....	DTXP6070										
Starter Shaft w/O-ring.....	DTXP6071										
Hand Held Unit Starter Gear Set.....	DTXP6072										
Hand Held Starter Unit	DTXP2023										

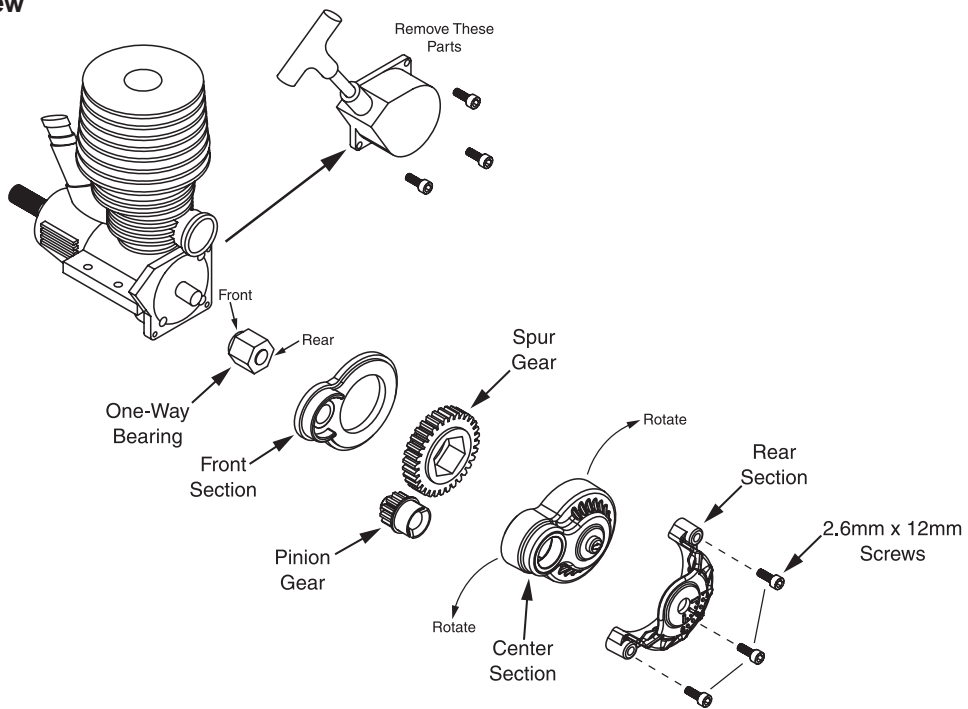
For technical assistance contact:
Hobbico Product Support
3002 N. Apollo Drive, Suite 1
Champaign, Illinois 61822
(217) 398-8970, EXT 5

E-mail: productsupport@greatplanes.com

- Hobbico will warranty the Kwik-Pit Super Start RTR for 90 days after the purchase date from defects in materials or workmanship. Hobbico will either repair or replace, at no charge, the incorrectly made part.
- To return your DuraTrax Kwik-Pit Super Start RTR for repairs, you should send it to:
- Make sure you save the receipt or invoice you were given when you bought your starter. It is your proof of purchase and we must see it before we can honor the warranty.

Hobby Services
3002 N. Apollo Drive, Suite 1
Champaign, Illinois 61822
Attention: Service Department
Phone: (217) 398-0007
9:00am - 5:00pm Central Time M-F
E-mail: hobbyservices@hobbico.com

Installation Exploded View



Operation Exploded View

