



Kwik-PitTM Super Start

Instructions

For DTXP6000, 6005, 6010, 6012, 6015, 6020, and 6022

Installation

USE THE EXPLODED VIEW DRAWINGS ON THE BACK FOR REFERENCE

1. Remove the screws that attach the recoil to the back of the engine.
2. Remove the recoil, and one-way bearing from the engine. Note the direction the one-way is installed for proper reinstallation.
3. Install the one-way into the Kwik-Pit Super Start adapter spur gear. **Note:** Be sure the one way is installed in the same direction it was originally.
4. Place the spur and pinion gears into the mounts of the inner half of the adapter case.
5. Align the screw holes and gears on the inner half of the case with those on the outer case half and press the two together. Once properly seated the case halves will fit together evenly around the entire edge with no gaps.
6. Align the screw holes of the adapter with the original recoil mounting points and install using the included hex screws.

Operation

1. Turn on the radio system and check for proper operation.
2. Install the glow plug igniter.
3. Insert the starter shaft into the back of the engine adapter unit and press the starter switch to activate.
Note: Stop the starter if the engine does not start within 10 seconds or if it becomes more difficult to turn-over. If the engine does not start, recheck the needle settings, glow plug or clear out the flooded engine according to the manufacturer's recommendations and retry.
4. Once the engine starts release the starter switch, remove the starter shaft and glow plug igniter.

PART	FITS	PART #	KEY#
WIRE HARNESS	All	DTXP6068	1
540 MOTOR	All	DTXP6037	2
PINION GEAR 12T	All	DTXP6038	3
STARTER SHAFT WITH O-RING	All	DTXP6024	4
O-RING FOR DRIVE SHAFT	All	DTXP6025	5
STARTER BODY CASE AND DOOR	All	DTXP6035	6
40 TOOTH STARTER GEAR	All	DTXP6039	7
SWITCH FOR SUPER START	All	DTXP6066	8
HEX GEAR SHAFT	All		9
SMALL HEX SHAFT BEARING 5X10MM	All	DTXC1535	10
LARGE HEX SHAFT BEARING 10X19MM	All		11
11 TOOTH SMALL ADAPTER GEAR	All	DTXP6045	12
32 TOOTH ADAPTER GEAR	DTXP6005	DTXP6046	13
(FOR HPI SAVAGE .21-.25)			
32 TOOTH ADAPTER GEAR	DTXP6000	DTXP6047	14
(FOR DURATRAX TORQ .21 AND VELOCITY .15-.17)			
32 TOOTH ADAPTER GEAR	DTXP6012	DTXP6048	15
(FOR TRAXXAS PRO .15)			
32 TOOTH ADAPTER GEAR	DTXP6010	DTXP6050	16
(FOR RS4 KYOSHO GT .12-.15)	DTXP6020		
32 TOOTH ADAPTER GEAR	DTXP6015	DTXP6049	17
(FOR TRAXXAS TMX 2.5)			

PART	FITS	PART #	KEY#
32 TOOTH ADAPTER GEAR	DTXP6022	DTXP6051	18
(FOR DURATRAX .18)			
GEAR CASE FOR HPI SAVAGE .21-.25	DTXP6005	DTXP6056	19
AND TRAXXAS TMX 2.5	DTXP6015		
GEAR CASE FOR DURATRAX TORQ .12	DTXP6000	DTXP6055	20
AND VELOCITY .15-.17			
GEAR CASE FOR TRAXXAS PRO .15	DTXP6012	DTXP6057	21
GEAR CASE FOR HPI RS4,	DTXP6010	DTXP6058	22
AND KYOSHO GT12 GT15			
GEAR CASE FOR OS .12 - .21	DTXP6020	DTXP6059	23
GEAR CASE FOR DURATRAX .18	DTXP6022	DTXP6060	24
GEARBOX CASE SCREWS	DTXP6000	DTXQ0283	25
	DTXP6005		
	DTXP6010		
	DTXP6020		
	DTXP6022		
GEARBOX CASE SCREWS	DTXP6012	DTXQ6012	26
	DTXP6015		
STARTER PINION SET SCREW	All	DTXQ0305	27

Hobbico Product Support
3002 N. Apollo Drive, Suite 1
Champaign, Illinois 61822
(217) 398-8970, EXT 5

For technical assistance contact:

E-mail: productsupport@greatplanes.com

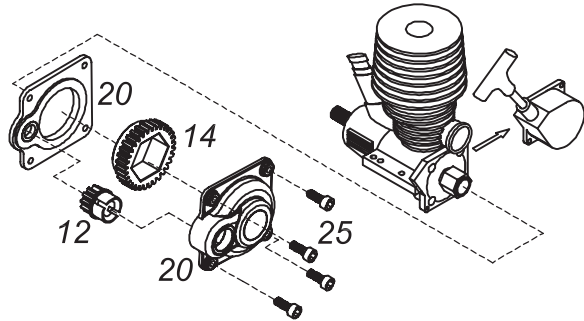
- Hobbico will warranty the Kwik-Pit Super Start for 90 days after the purchase date from defects in materials or workmanship. Hobbico will either repair or replace, at no charge, the incorrectly made part.
- Make sure you save the receipt or invoice you were given when you bought your starter box. It is your proof of purchase and we must see it before we can honor the warranty.

- To return your DuraTrax Kwik-Pit Super Start for repairs covered under warranty you should send it to:

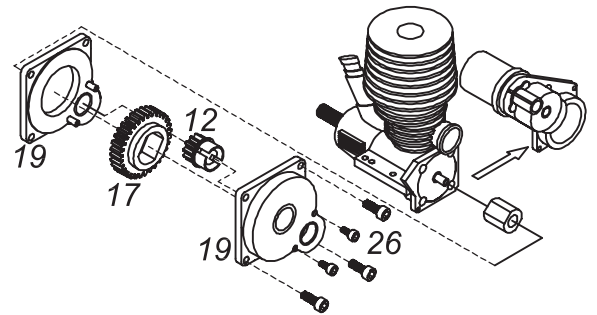
Hobby Services
3002 N. Apollo Drive Suite 1
Champaign, Illinois 61822
Attn: Service Department

Phone: (217) 398-0007 9:00am-5:00pm Central Time M-F
E-mail: hobbyservices@hobbico.com

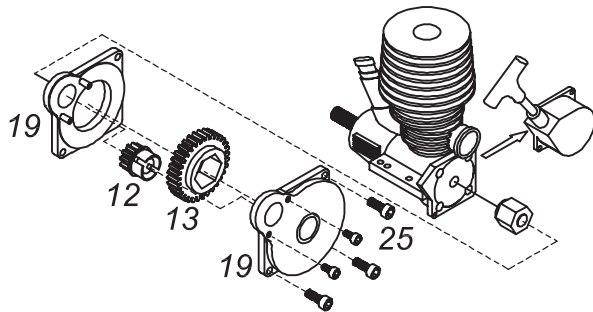
DTXP6000
Duratrax Torq 21, Velocity .15-.17



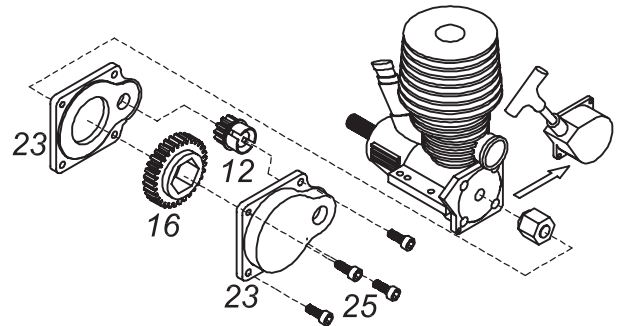
DTXP6015
Traxxas TMX 2.5



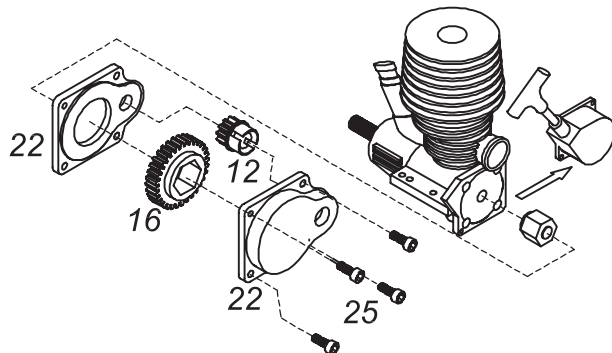
DTXP6005
HPI Savage .21-.25



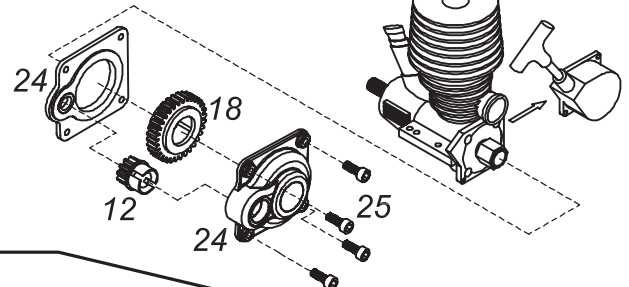
DTXP6020
OS .12-.21



DTXP6010
HPI RS4-3, Kyosho GT .12-.15



DTXP6022
Duratrax .18



DTXP6012
Traxxas Pro .15

