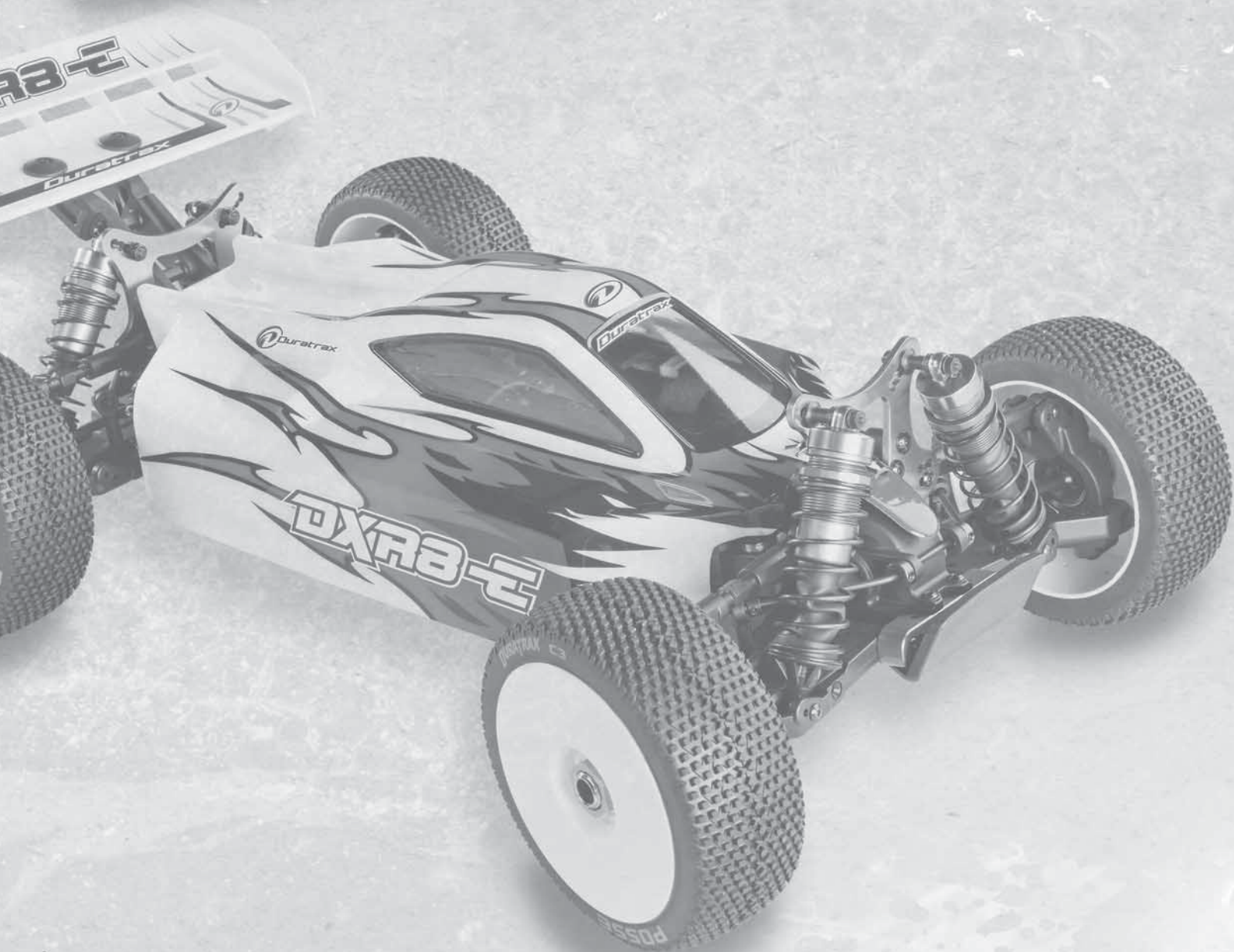


DXR8-E



INSTRUCTION MANUAL



Required for Operation



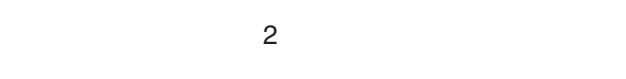
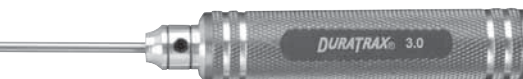
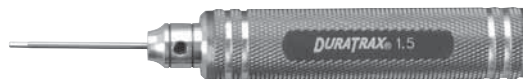
**Futaba® 4PL
Radio System**



- Transmitter (FUTK1400)
- Receiver (FUTL7616)
- LiPo Battery (TKPC0390 x2 OR TKPC0450 x1)
- 1/8-Scale Brushless Motor
- Brushless Electronic Speed Control
- High Torque Servo (FUTM0217)
- Pinion Gear (DTXC8373-DTXC8378)
- Antenna Tube (DTXC2415)
- AA Batteries (Tx)
- Velcro® (GPMQ4480)
- Servo Tape (DTXR1215)



Tools Required



- CA Glue (TKPR3000)
- Shock Oil
- Differential Oil
- Needle Nose Pliers (DTXR0300)
- Hobby Knife (RMXR6901)
- 2.5mm Hex Wrench (DTXR0290)
- 2mm Hex Wrench (DTXR0289)
- 1.5mm Hex Wrench (DTXR0288)
- 17mm Wheel Wrench (DTXR1175)
- 7mm Nut Driver (DTXR0216)
- 5.5mm Nut Driver (DTXR0212)
- Phillips Screwdriver (DTXR0182)

SAFETY PRECAUTIONS:

When the safety precautions are followed, the DXR8-E will provide years of enjoyment. Use care and good sense at all times when operating this radio controlled vehicle. Failure to use this vehicle in a safe, sensible manner can result in injury or damage to property. You and you alone must insure that the instructions are carefully followed and all safety precautions are obeyed.

- ▶ Do not operate the DXR8-E near people. Spectators should be behind the driver or at a safe distance away from the vehicle.
- ▶ Make sure to read the instructions with the battery and charger before charging.
- ▶ Do not leave any charger unattended during charging. If the battery or charger become hot at any time, disconnect the battery from the charger immediately! Failure to do so may cause permanent damage to the charger and battery and may cause bodily harm.
- ▶ When charging LiPo battery packs, always use a charge bag such as GPMP0751.
- ▶ Always turn on the transmitter before turning on the electronic speed control.

HELPFUL HINTS:

- ▶ Avoid working over a deep pile carpet. If you drop a small part or screw, it may be difficult to find.
- ▶ Place a mat or towel over your work area. This will prevent parts from rolling off and will protect the work surface.
- ▶ Avoid running the vehicle in cold weather. The plastic and metal parts can become brittle at low temperatures. In addition, grease and oil become thick, causing premature wear and poor performance.

SPECIFICATION AND DESCRIPTION CHANGES:

All pictures, descriptions and specifications found in this instruction manual are subject to change without notice. Duratrax maintains no responsibility for inadvertent errors in this manual. Visit **Duratrax.com** for the latest updates and information for your model.

WARRANTY:

- ▶ Duratrax® guarantees this kit to be free from defects in both material and workmanship at the date of purchase. Duratrax will warranty this kit for 90 days after the purchase date. Duratrax will repair or replace, at no charge, the incorrectly made part.
- ▶ Make sure you save the receipt or invoice you were given when you bought your model! It is your proof of purchase and we must see it before we can honor the warranty. Further, Duratrax reserves the right to change or modify this warranty without notice.
- ▶ In that Duratrax has no control over the final user assembly or material used for final user assembly, no liability shall be assumed nor accepted for any damage resulting from the use by the user of the final user-assembled product. By the act of using the user-assembled product, the user accepts all resulting liability.

To return your DXR8-E for repairs covered under warranty you should send your Vehicle to:

Hobby Services
3002 N. Apollo Drive Suite 1
Champaign, Illinois 61822
Attn: Service Department
Phone: (217) 398-0007 9:00 am-5:00 pm
Central Time M-F
E-mail: hobbyservices@hobbico.com
www.hobbyservices.com

If the buyer is not prepared to accept the liability associated with the use of this product, the buyer is advised to return this kit immediately in new and unused condition to the place of purchase.

STRESS-TECH PARTS GUARANTEE:

We have engineered the DXR8-E to take the rough and tumble abuse that makes R/C fun. We are so confident of the quality and durability of the Stress-Tech plastic parts that we will replace any Stress-Tech plastic part you break during the first 12 months you own the DXR8-E. Just send in the part to us and we will send you a FREE replacement. Please see the DXR8-E parts list for the items covered under the Stress-Tech guarantee.

To receive your free replacement part please send the following to the Hobby Services address listed above.

- ▶ 1. The broken part must be included.
- ▶ 2. The part number and description of the broken part.
- ▶ 3. Copy of your dated invoice or purchase receipt.
- ▶ 4. Your name, phone number and shipping address.

REPAIR SERVICE:

Repair service is available anytime.

- ▶ After the 90 day warranty, you can still have your DXR8-E repaired for a small charge by the experts at Duratrax's authorized repair facility, Hobby Services.
- ▶ To speed up the repair process, please follow the instructions listed below.

1. Under most circumstances return the ENTIRE vehicle. The exception would be sending in a Stress-Tech part. See the instruction under the Stress-Tech Guarantee.

2. Make sure the transmitter is turned off, and all of the batteries are removed.

3. Send written instructions which include: a list of all items returned, a THOROUGH explanation of the problem, the service needed and your phone number during the day. If you expect the repair to be covered under warranty, be sure to include a proof of date of purchase (your store receipt or purchase invoice).

4. Send to Hobby Services at the address shown. When shipping your item(s) to us, we recommend that you insure it and use a company that offers a tracking service (such as Federal Express Ground or UPS Ground).

Our staff will carefully inspect your item and notify you of their findings, at which time you will be notified of your options for return, repair, or replacement. Please note that items sent back unrepaired will still carry a service charge and return shipping.

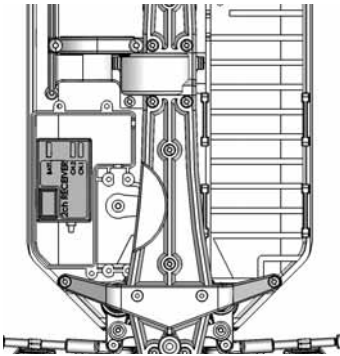
Hobby Services accepts Visa® and Mastercard®, or you can send in a check. Additionally we can return the item C.O.D., but additional charges apply.



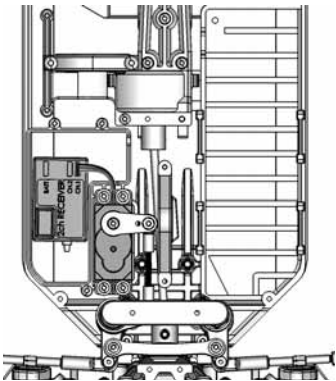
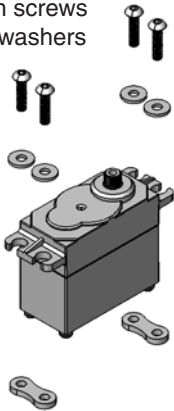
FINISHING GUIDE:

Remove the receiver box lid from the buggy.
Install your receiver into the receiver box.

Tip: Secure the receiver to the receiver box using adhesive backed Velcro.



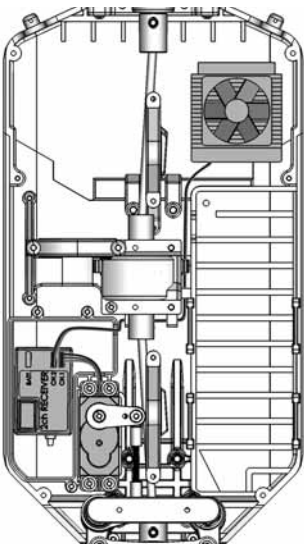
3x12mm screws
& 3mm washers



Remove the front upper brace assembly and install the steering servo. Note the direction of the servo. Depending on the servo you are using, you may need to use the included servo spacers under the servo mount tabs to raise the servo up so that it does NOT touch the chassis.

Locate the correct steering servo horn adapter (included with the DXR8-E) and install it into the steering servo horn. Do not install the servo horn yet.

SERVO TYPE	ADAPTER	SPACER
Airtronics®/Sanwa	23T	2mm*
Futaba®/Duratrax	25T	2mm*
Hitec®/Hobbico®	24T	0*
KO Propo	23T	1mm*
JR® Propo	23T	0*



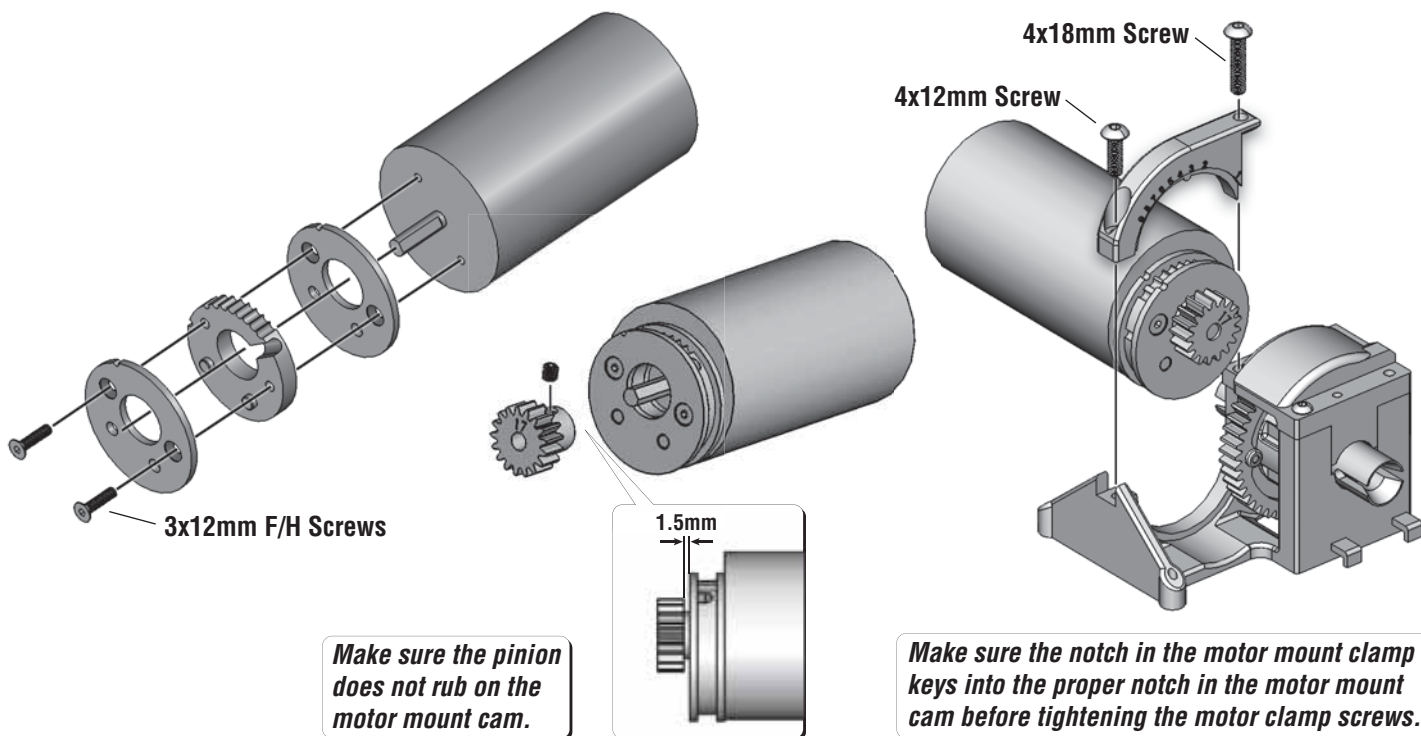
Install the ESC onto the chassis as shown.

Tip: Before permanently installing the ESC onto the chassis put the ESC in place and check that the wires route properly.

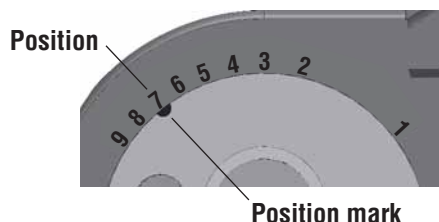
Permanently install the ESC in place using a quality double-sided tape (DTXR1215).

Remove the rear upper brace assembly and center diff/motor mount from the chassis. Route the ESC/receiver wire using the tabs located on the bottom of the diff/motor mount assembly and re-install back into the chassis.

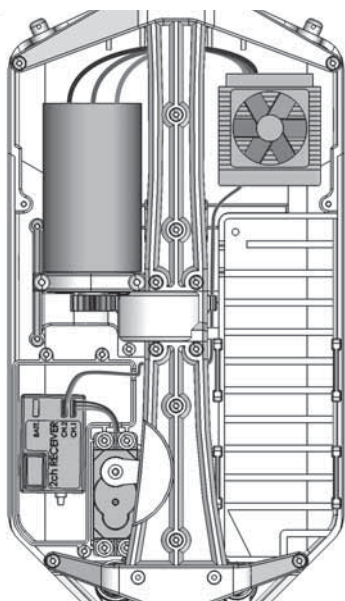
Tip: Make sure the ESC wires going to the receiver lay flat and are not pinched.



GEAR RATIO	PINION																	
	11	12	13	14	15	16	17	18	19	20								
SPUR	47	18.4 2	16.8 3	15.5 4	14.4 5	13.5 6	12.6 7	11.9 8	11.2 9	N/A	N/A							
	46	18.0 2	16.5 2	15.2 3	14.1 4	13.2 5	12.4 6	11.6 7	11.0 8	10.4 9	N/A							
	45	N/A	16.1 1	14.9 2	13.8 3	12.9 4	12.1 5	11.4 6	10.8 7	10.2 8	9.7 9							



	PINION GEAR 11	
SPUR GEAR 47	18.4 2	Position Final Gear Ratio



Re-install the front and rear upper brace assemblies onto the chassis.

Install your motor into the chassis then install your desired pinion.

Route your receiver antenna through the antenna mount on the receiver box lid and re-install the receiver box lid onto the chassis. Make sure the servo leads pass through the holes in the receiver box properly and are not pinched.

Route your receiver antenna wire through the antenna tube (not included) and install the antenna tube into the receiver box lid.

Install your battery into the DXR8-E and center your steering trims on your radio. Install the steering servo horn onto the steering servo and secure in place.

If you are using a 4S battery, you will need to remove the battery spacer from the chassis. If you are using (2) 2S batteries no change is required.

Paint and decal the body as desired.

MAINTENANCE GUIDE: The following section is provided to help you with maintenance and repairs to your DXR8-E. Pay extra attention to the notes and tips for proper assembly.

1

Apply a small amount of grease onto the O-ring and output joint before assembling.

6x18mm Washer

2.5x10.8mm Pin

8x16mm Ball Bearing

Align the flat spots on the gear shafts so they key together.

x3

2

8x16mm Ball Bearing

6x18mm Washer

2.5x10.8mm Pin

Apply a small amount of grease onto the O-ring and output joint before assembling.

3x10mm F/H Screws

DIFFERENTIAL OIL

x2

Fill the differential with differential oil until it reaches the top of the cross pins. Allow the oil to settle for a few minutes and re-check.

Install the differential screws and finish tightening them in order 1-4. This will help ensure that the differential gear is mounted flat against the differential housing and properly sealed. Be careful not to overtighten the screws.

3

2.5x10.8mm Pin
6x18mm Washer

Apply a small amount of grease onto the O-ring and output joint before assembling.

8x16mm Ball Bearing

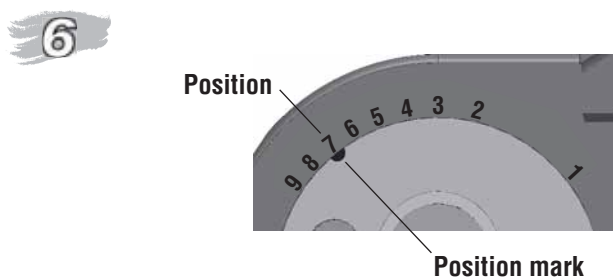
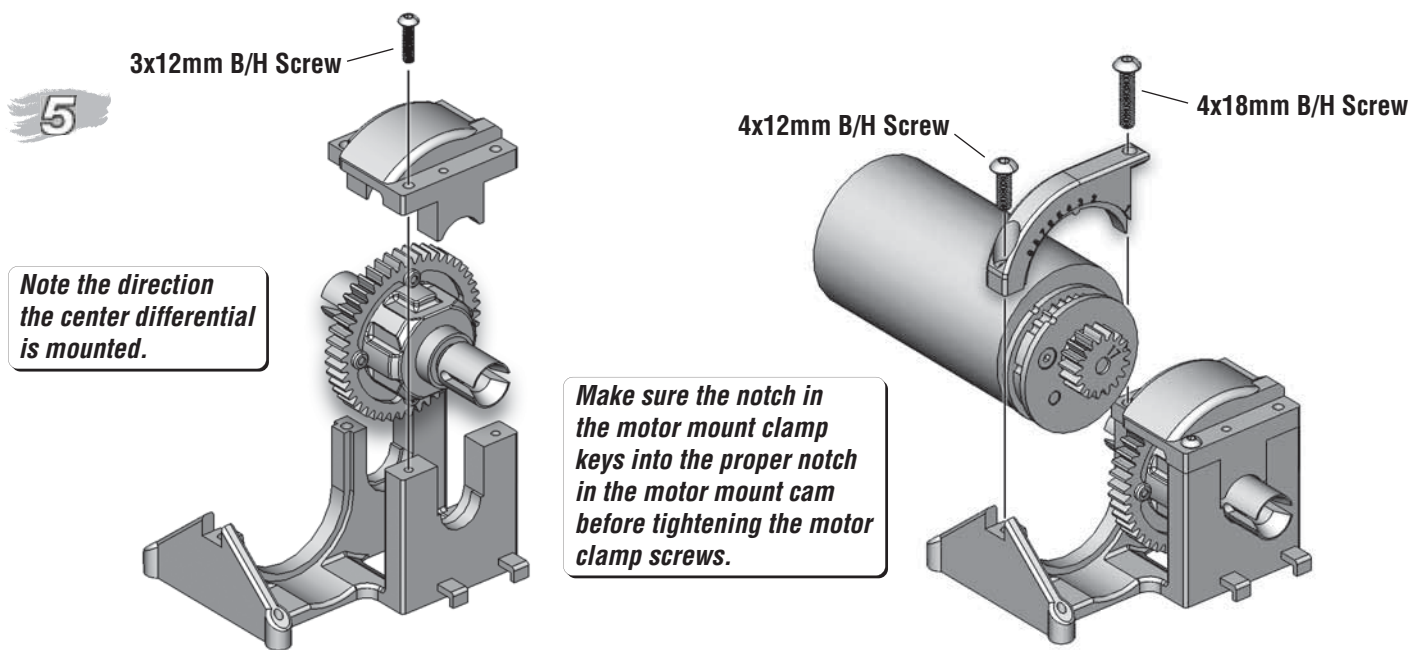
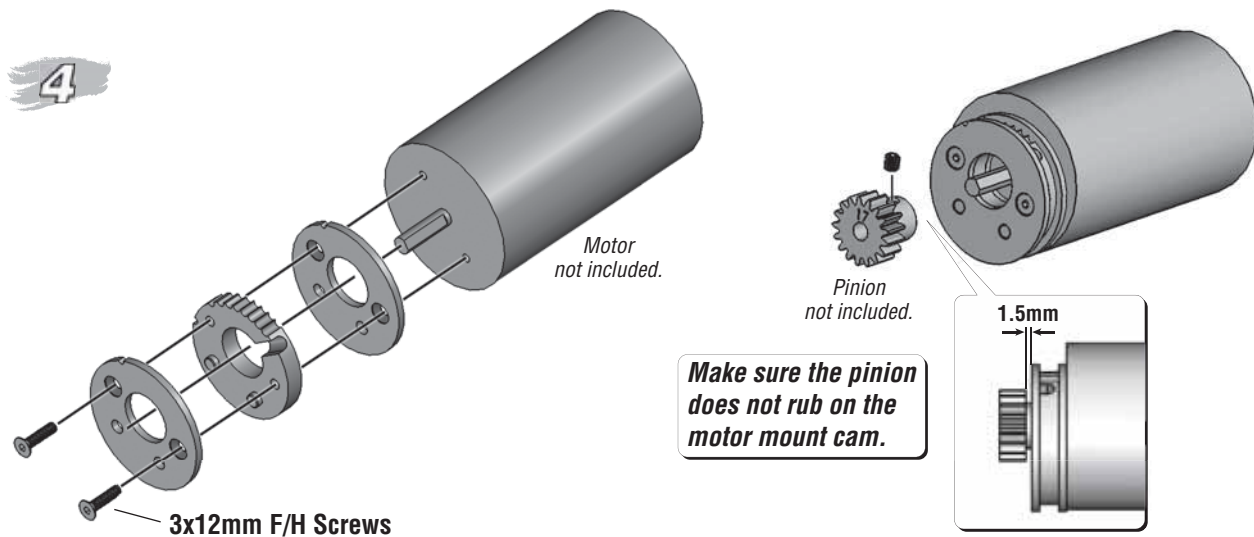
3x10mm F/H Screws

DIFFERENTIAL OIL

Refer to the tuning guide at duratrax.com for differential oil setup tips.

3x8mm F/H Screws





		PINION GEAR 11	
SPUR GEAR 47	18.4	2	Position Final Gear Ratio

GEAR RATIO		PINION																			
		11		12		13		14		15		16		17		18		19		20	
SPUR	47	18.4	2	16.8	3	15.5	4	14.4	5	13.5	6	12.6	7	11.9	8	11.2	9	N/A		N/A	
	46*	18.0	2	16.5	2	15.2	3	14.1	4	13.2	5	12.4	6	11.6	7	11.0	8	10.4	9	N/A	
	45	N/A		16.1	1	14.9	2	13.8	3	12.9	4	12.1	5	11.4	6	10.8	7	10.2	8	9.7	9

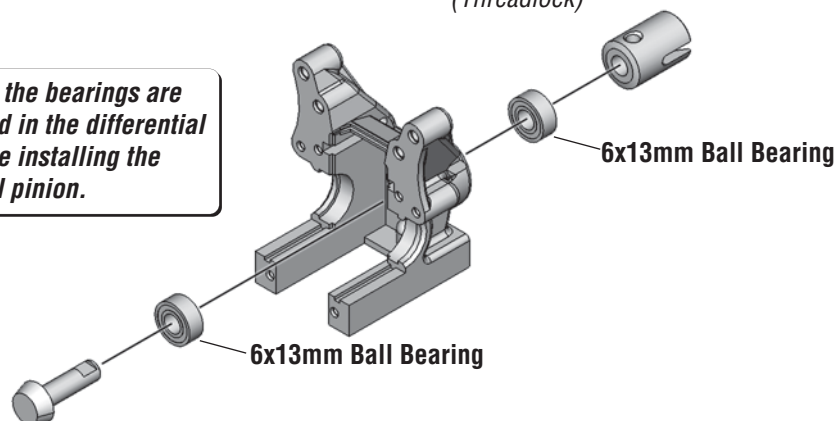
*Stock spur gear

7

5x5mm
Set Screw
(Threadlock)

x2

Make sure the bearings are fully seated in the differential case before installing the differential pinion.



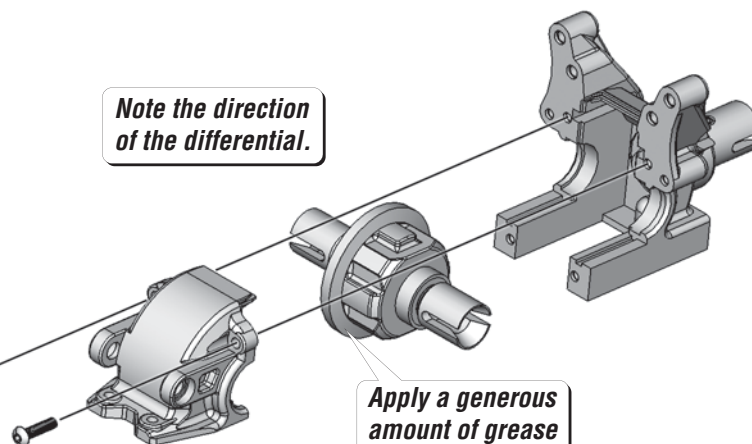
8

x2

Note the direction of the differential.

3x12mm B/H Screws

Apply a generous amount of grease to the diff gear.



9

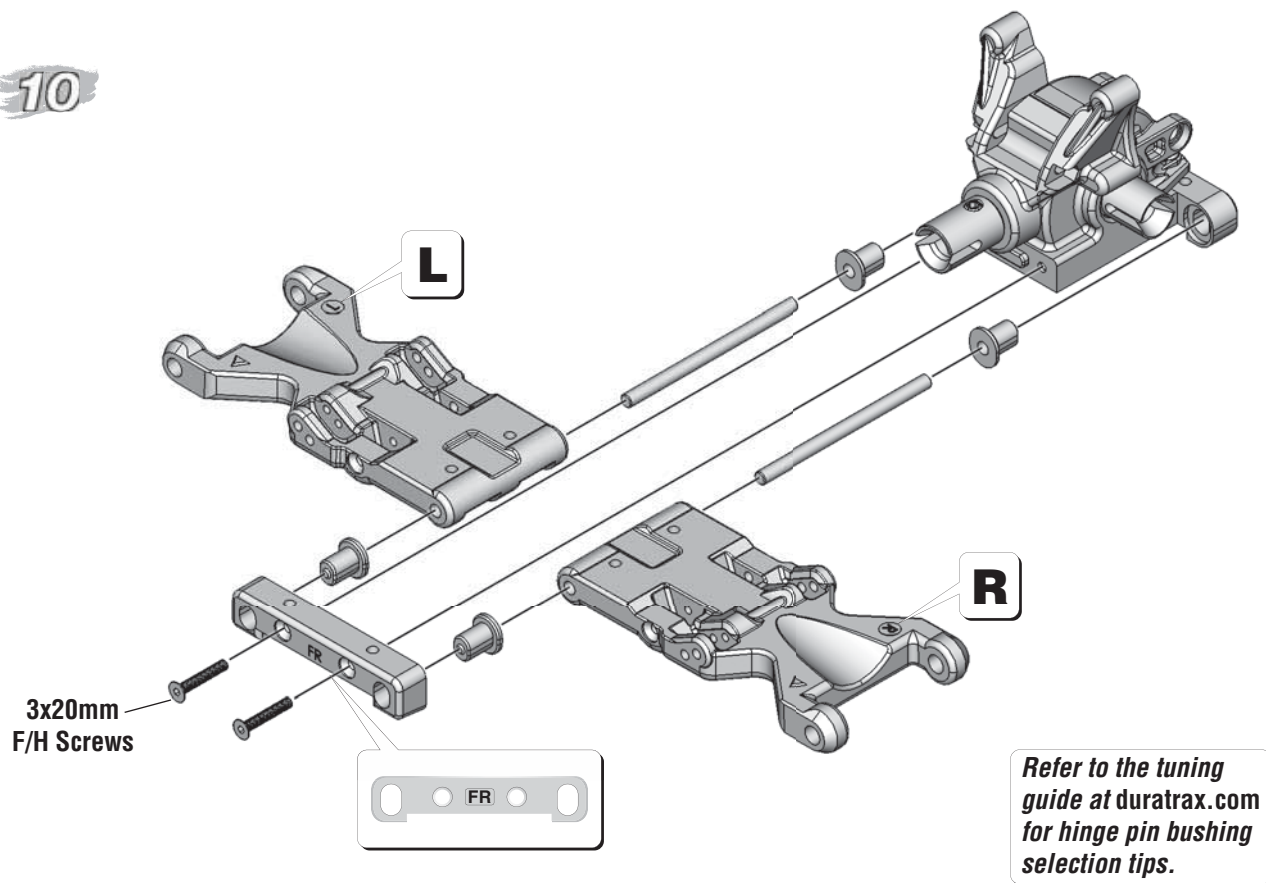
3x12mm B/H Screws

FRONT DIFFERENTIAL

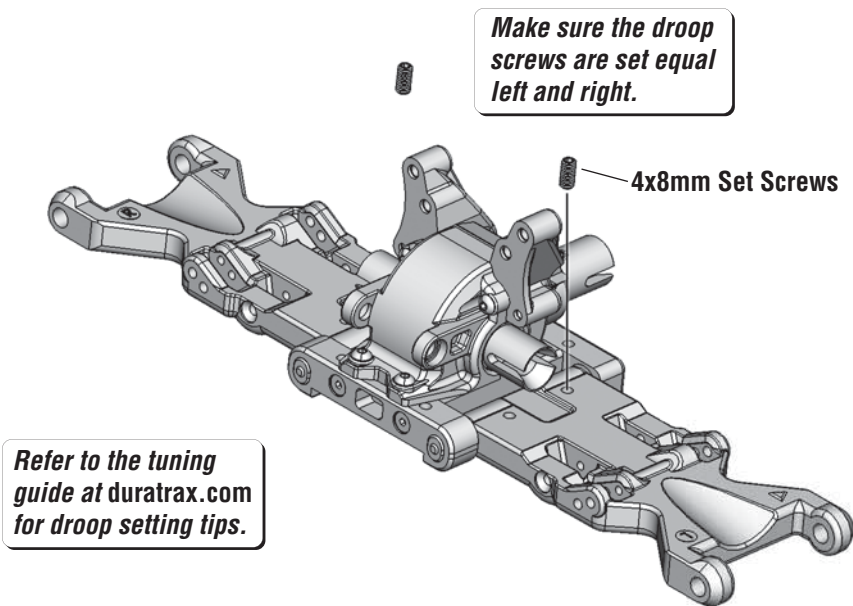
3x12mm F/H Screws



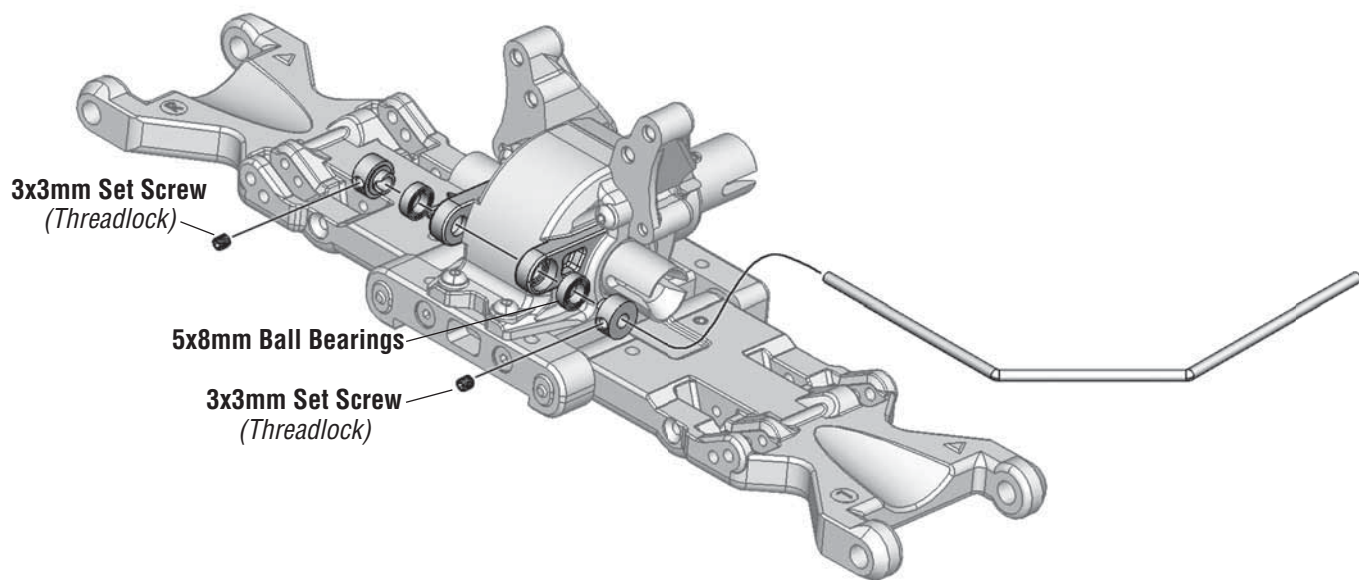
10



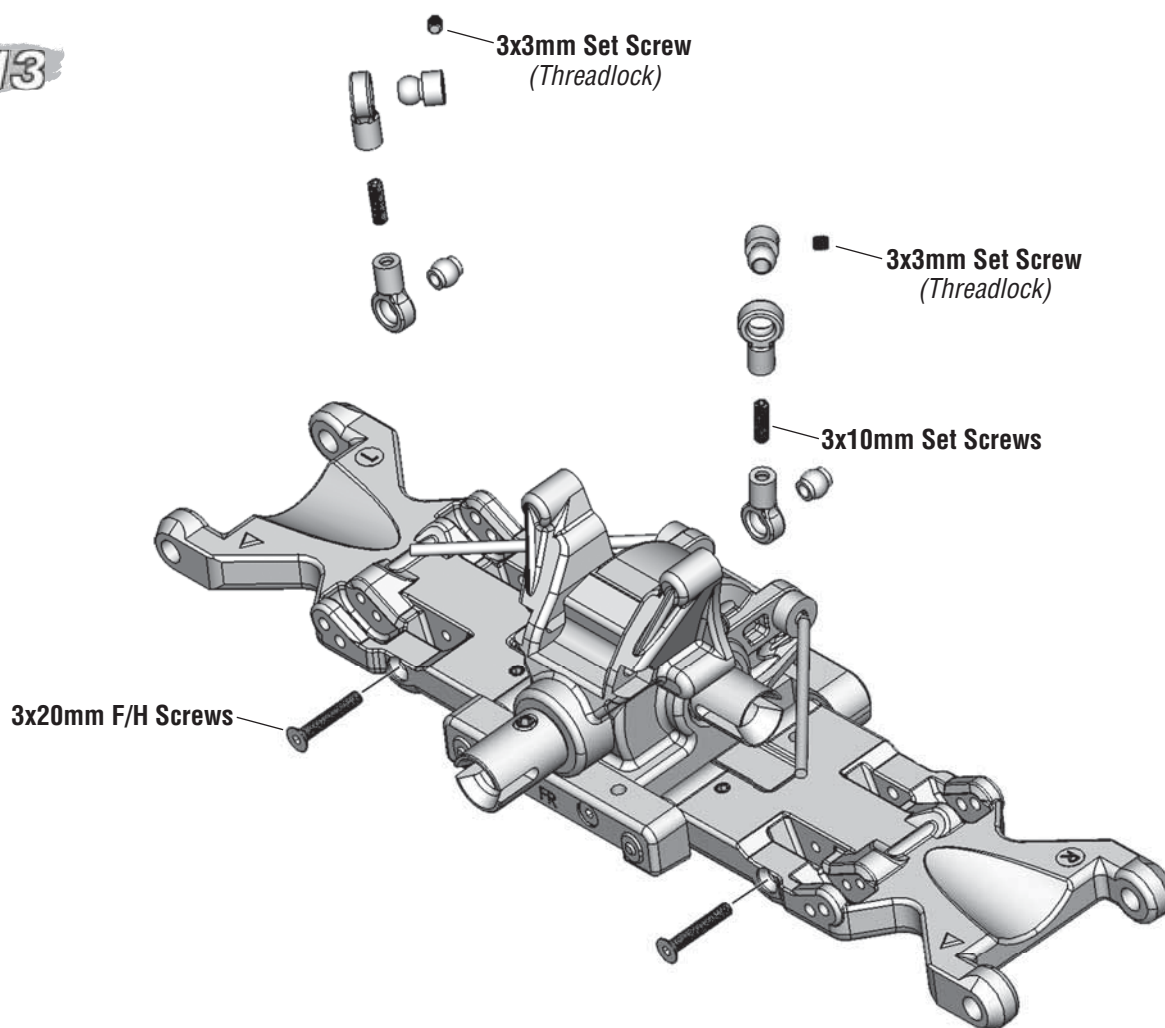
11



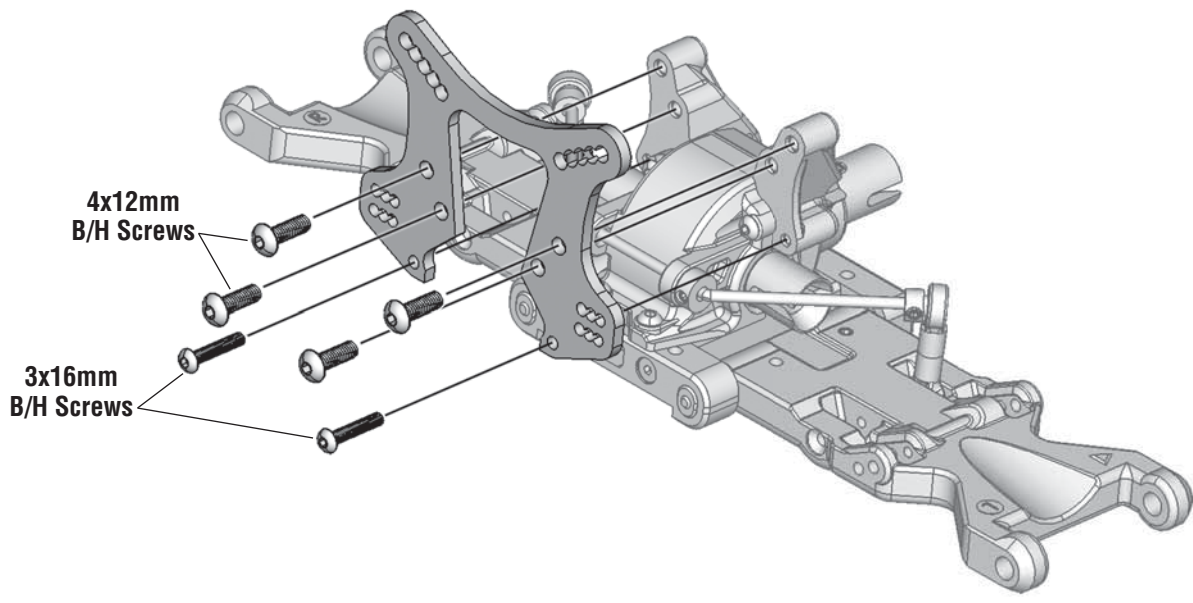
12



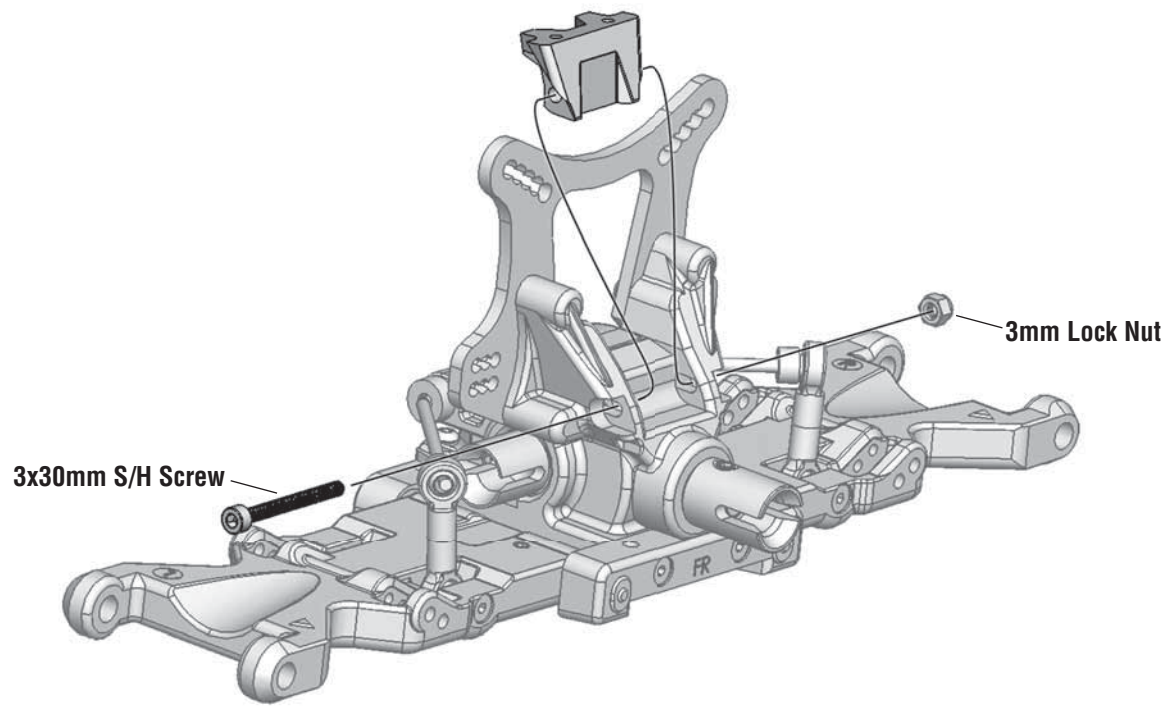
13



14

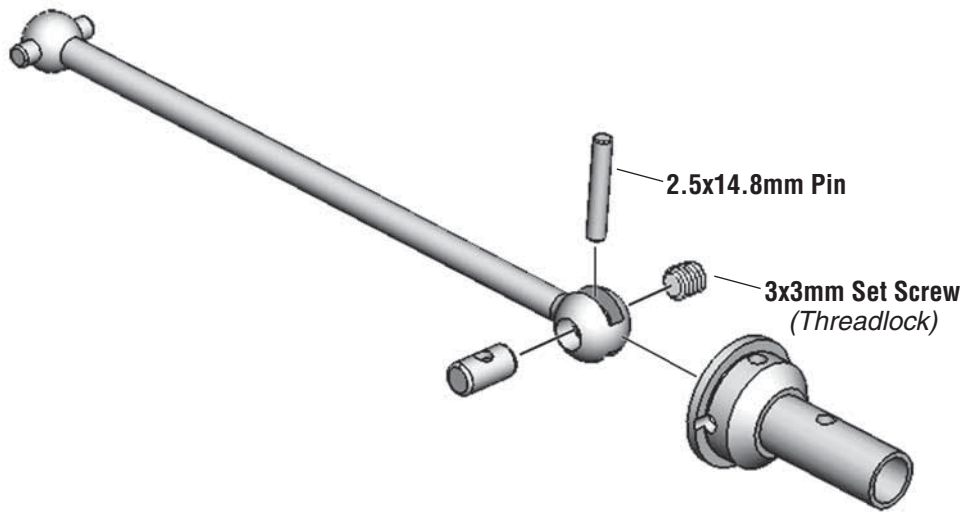


15



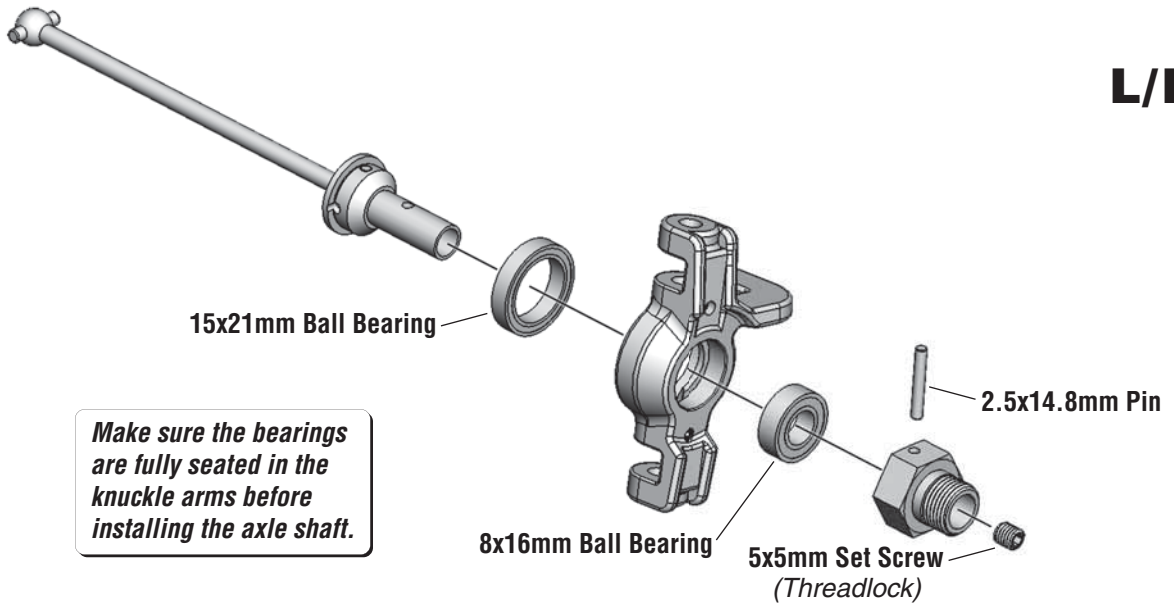
16

x2



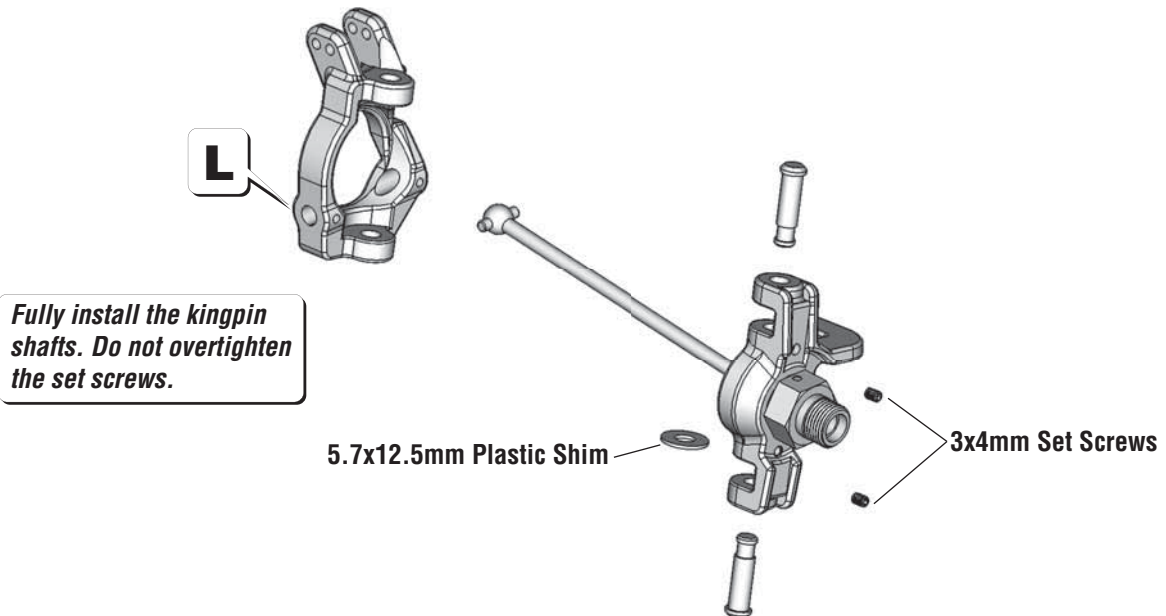
17

L/R

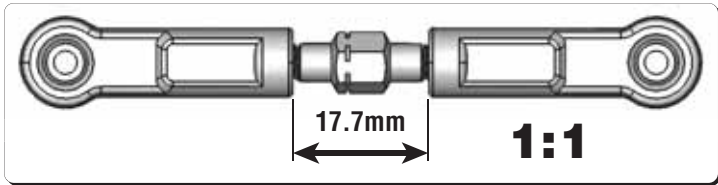


18

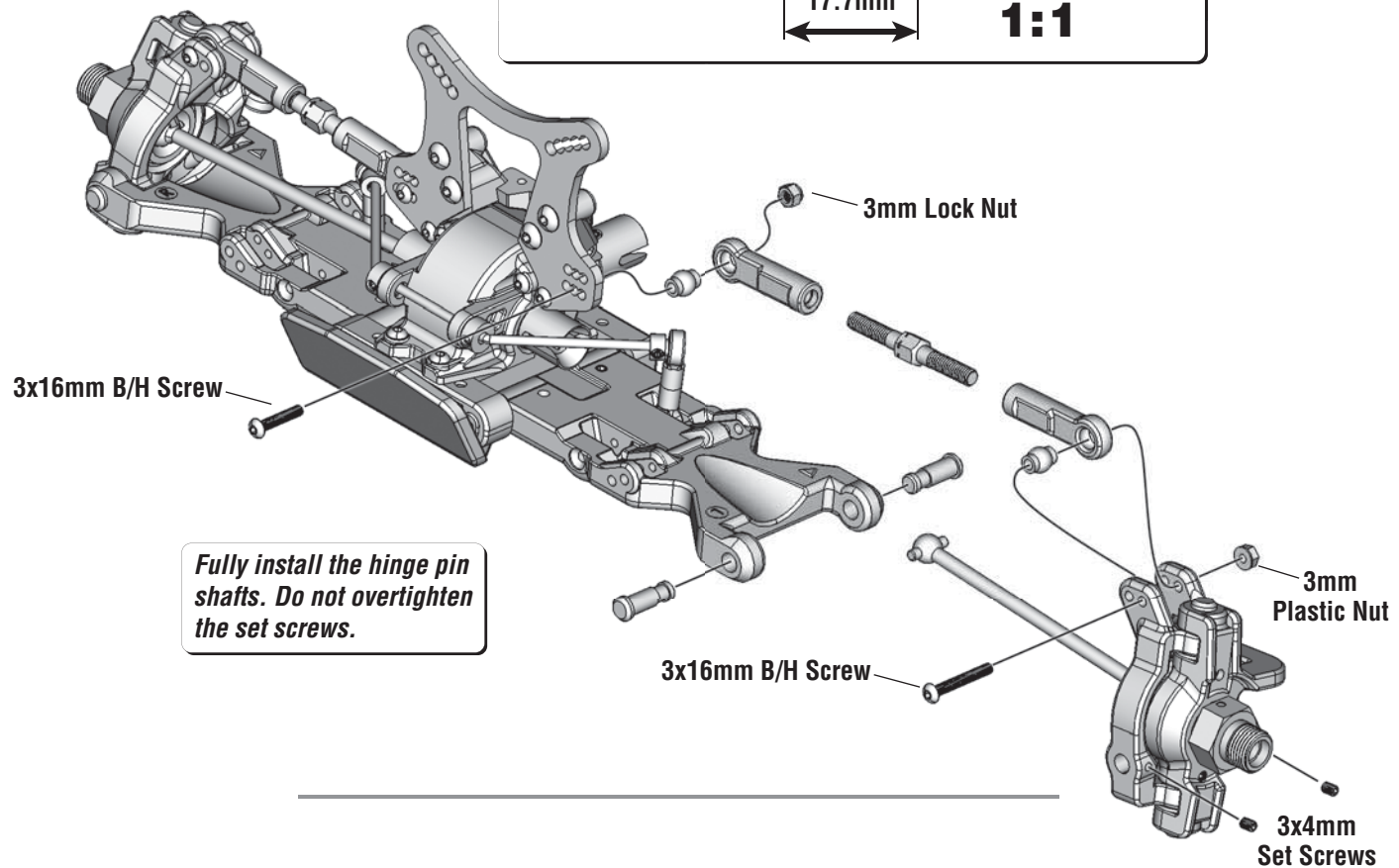
L/R



19

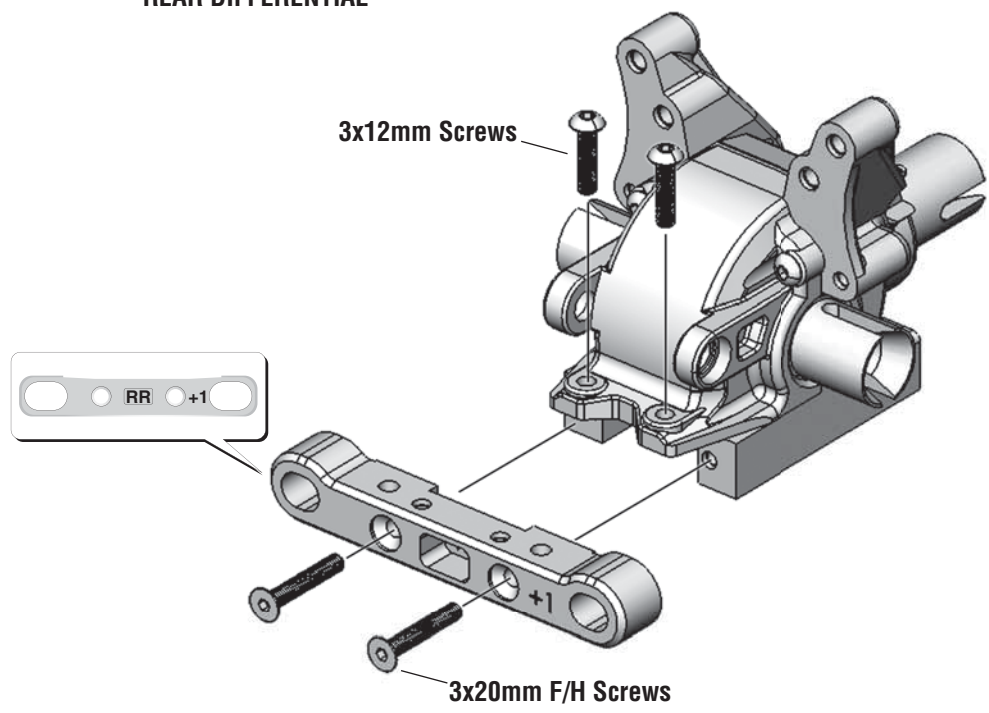


L/R

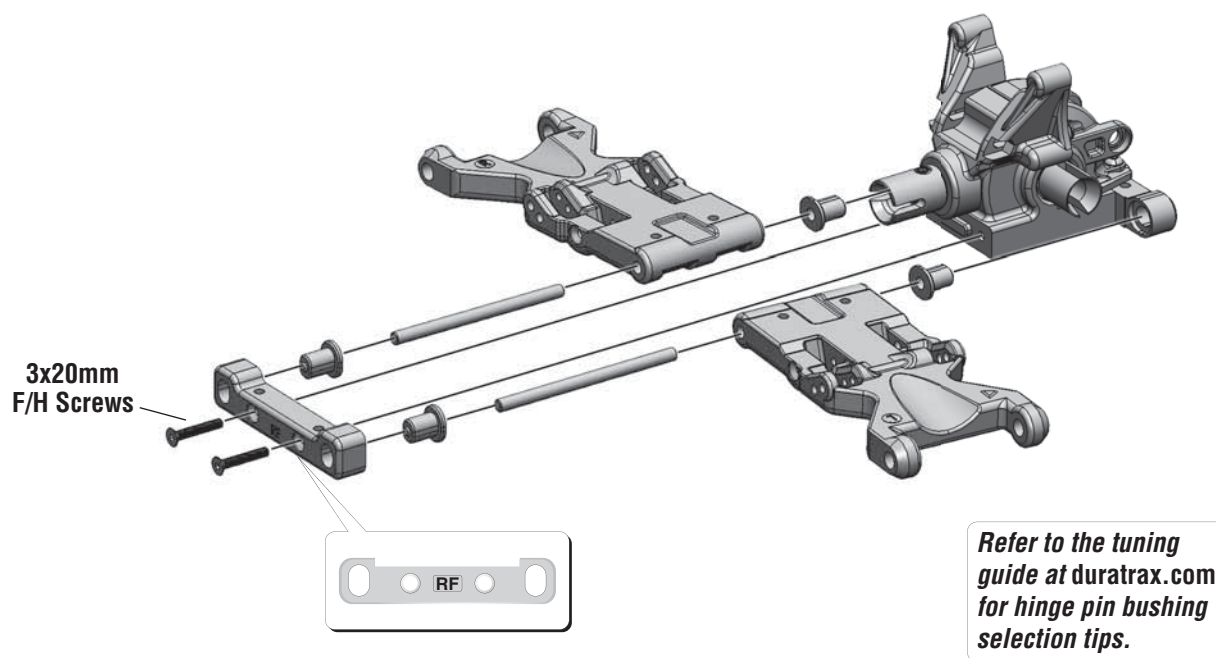


20

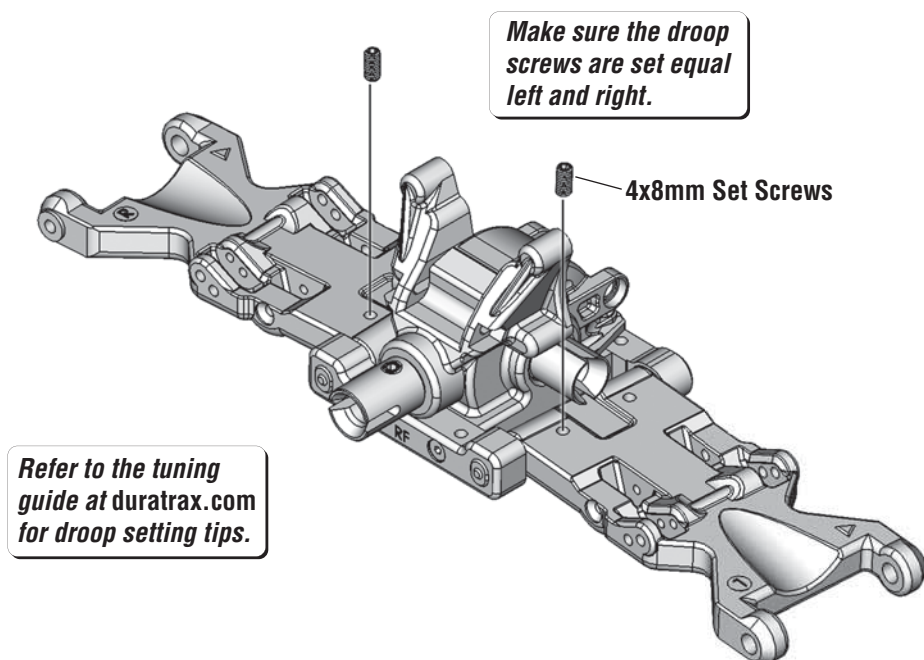
REAR DIFFERENTIAL



21

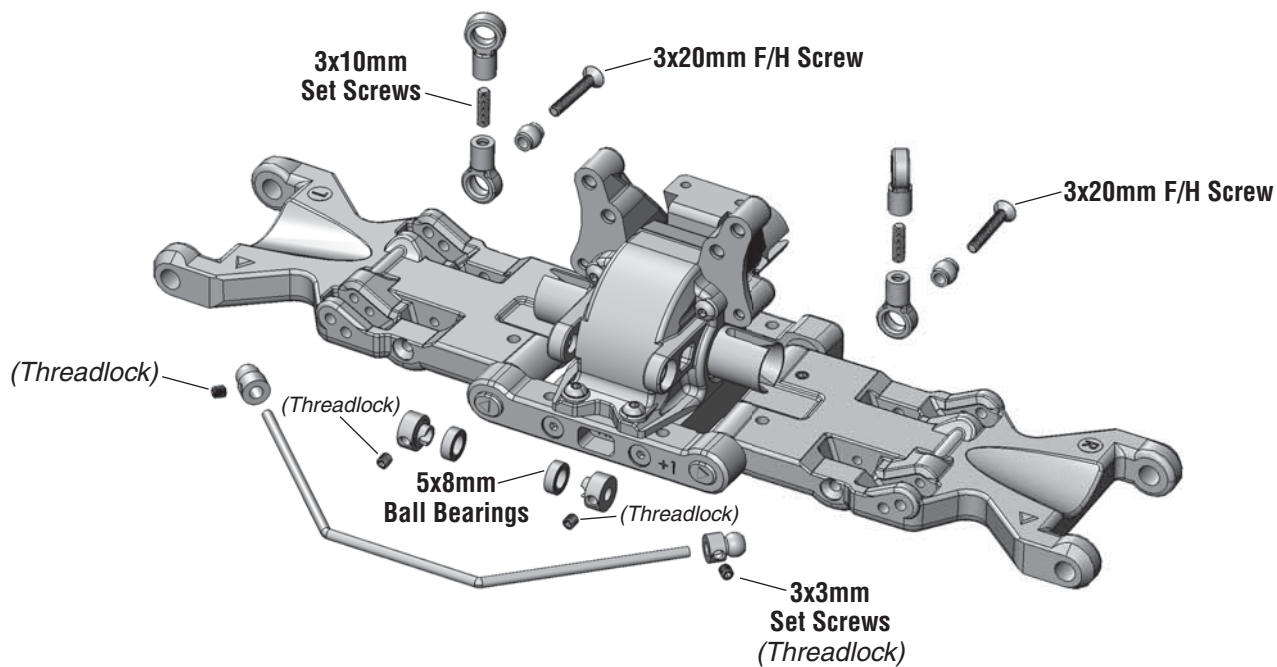


22

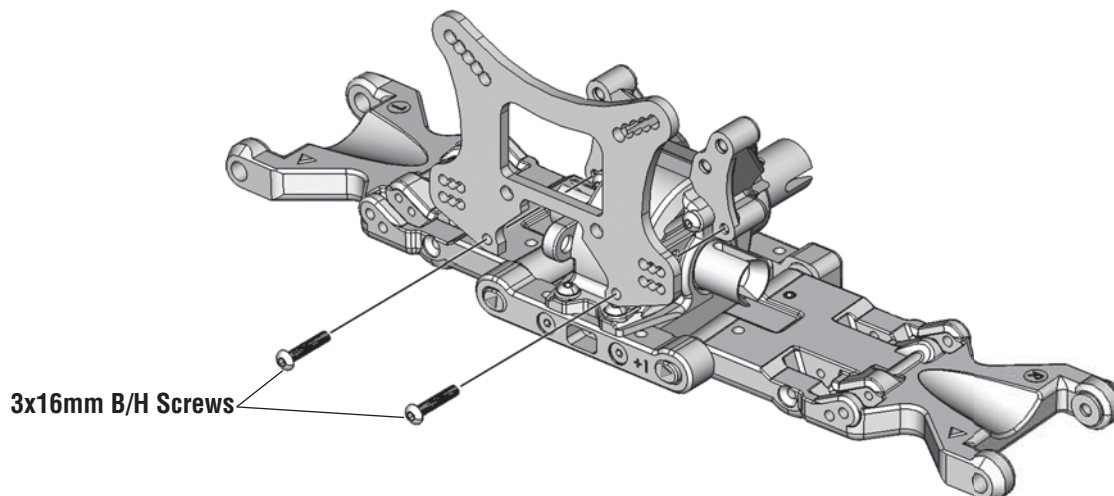


23

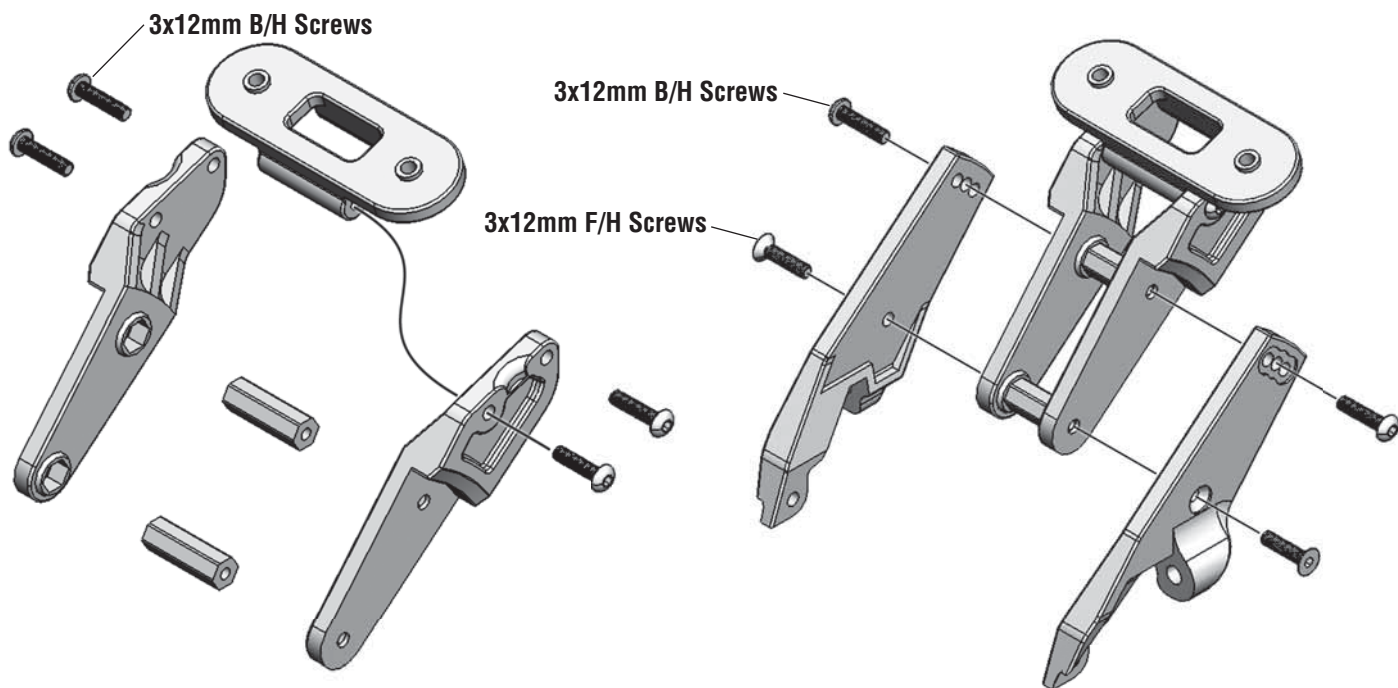
Make sure the swaybar balls are set the same distance from the end of the swaybar left and right.



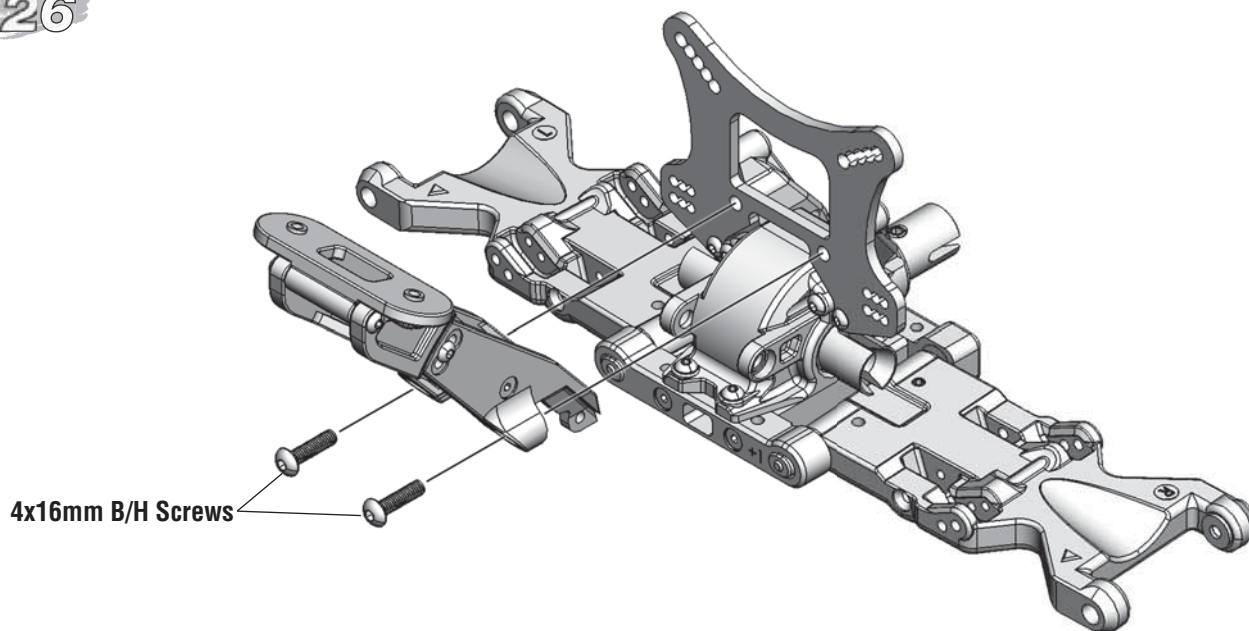
24



25

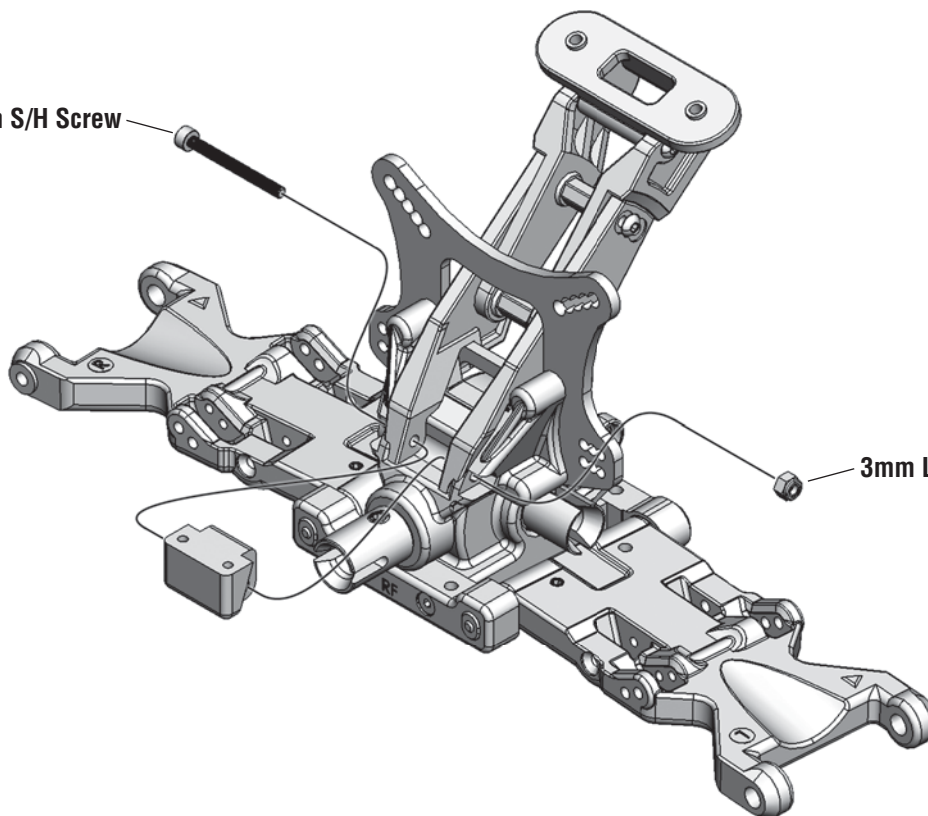


26



27

3x30mm S/H Screw

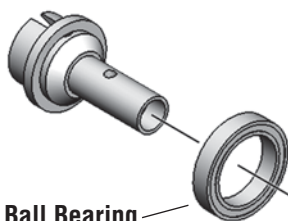


3mm Lock Nut

28

Make sure the bearings are fully seated in the rear hubs before installing the axle shaft.

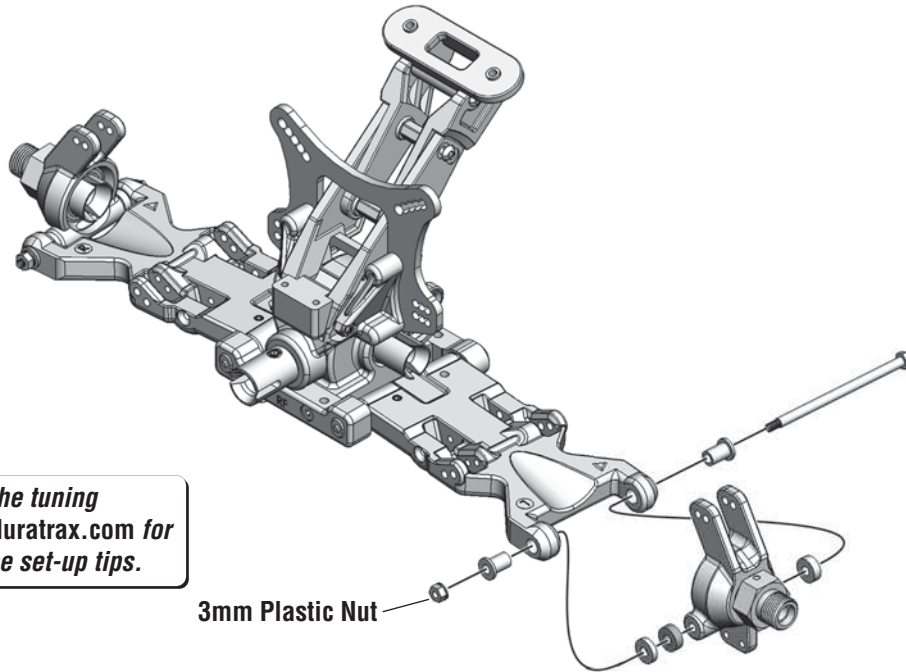
15x21mm Ball Bearing



8x16mm Ball Bearing

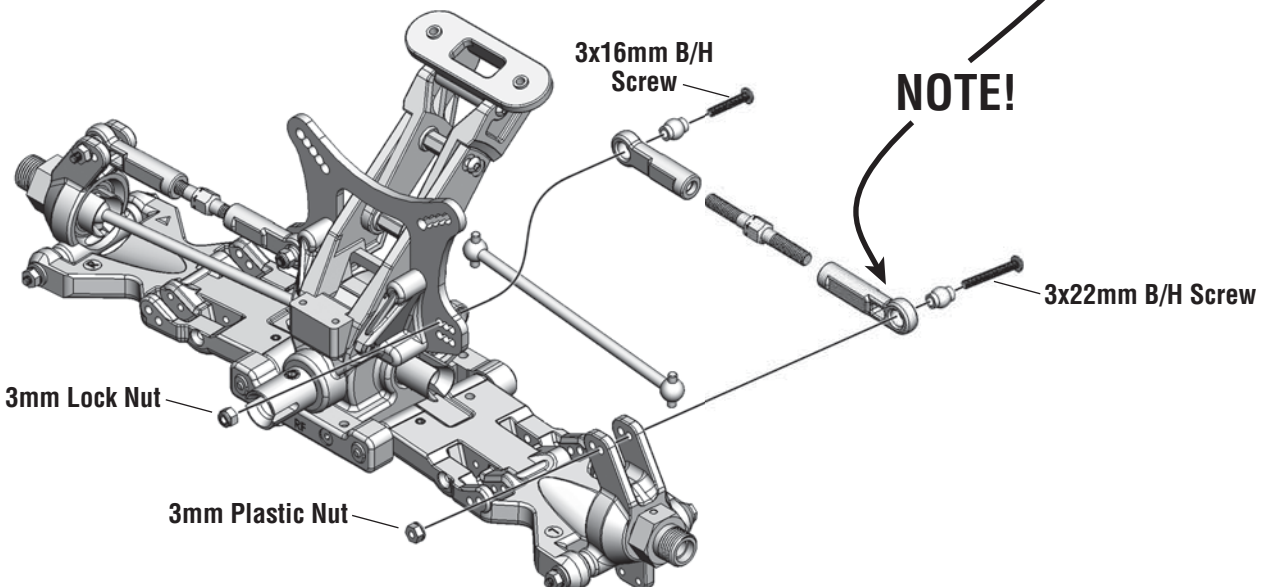
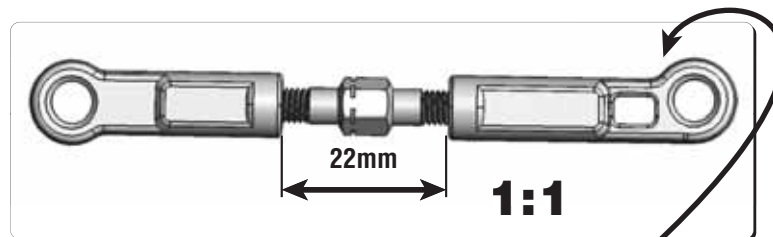
2.5x16.8mm Pin

5x5mm Set Screw
(Threadlock)



3mm Plastic Nut

Make sure the rear hubs are spaced the same on left and right.



3x16mm B/H Screw

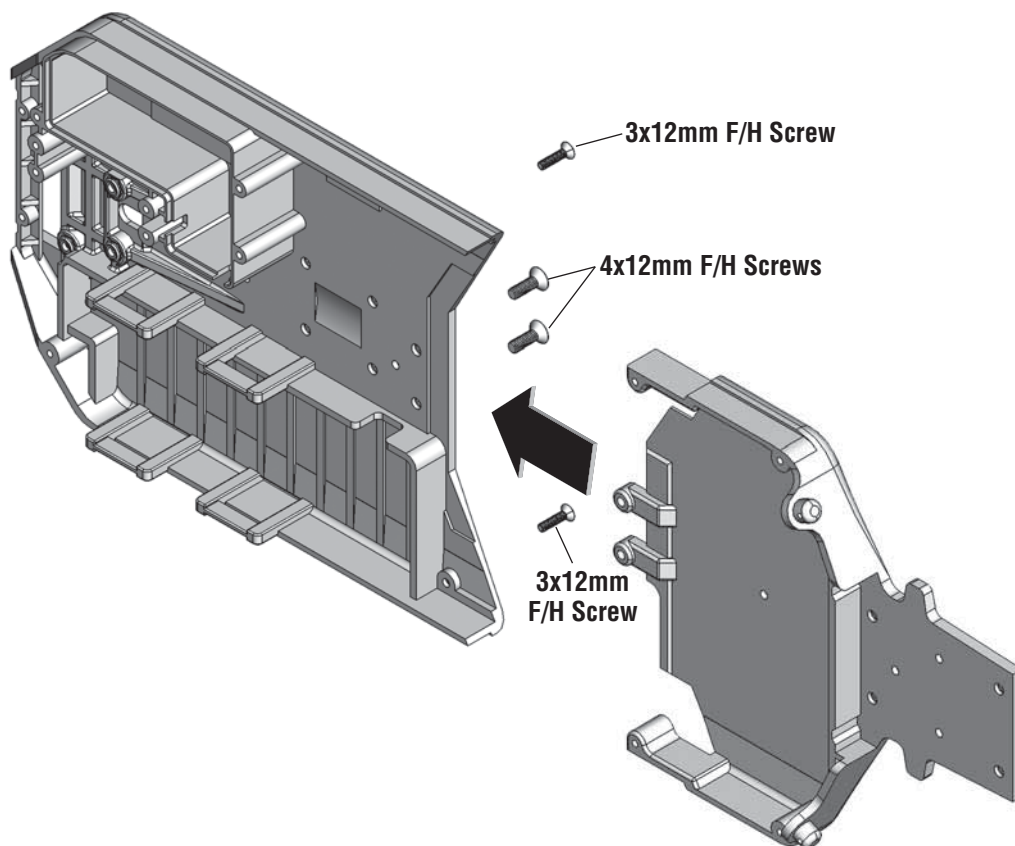
NOTE!

3x22mm B/H Screw

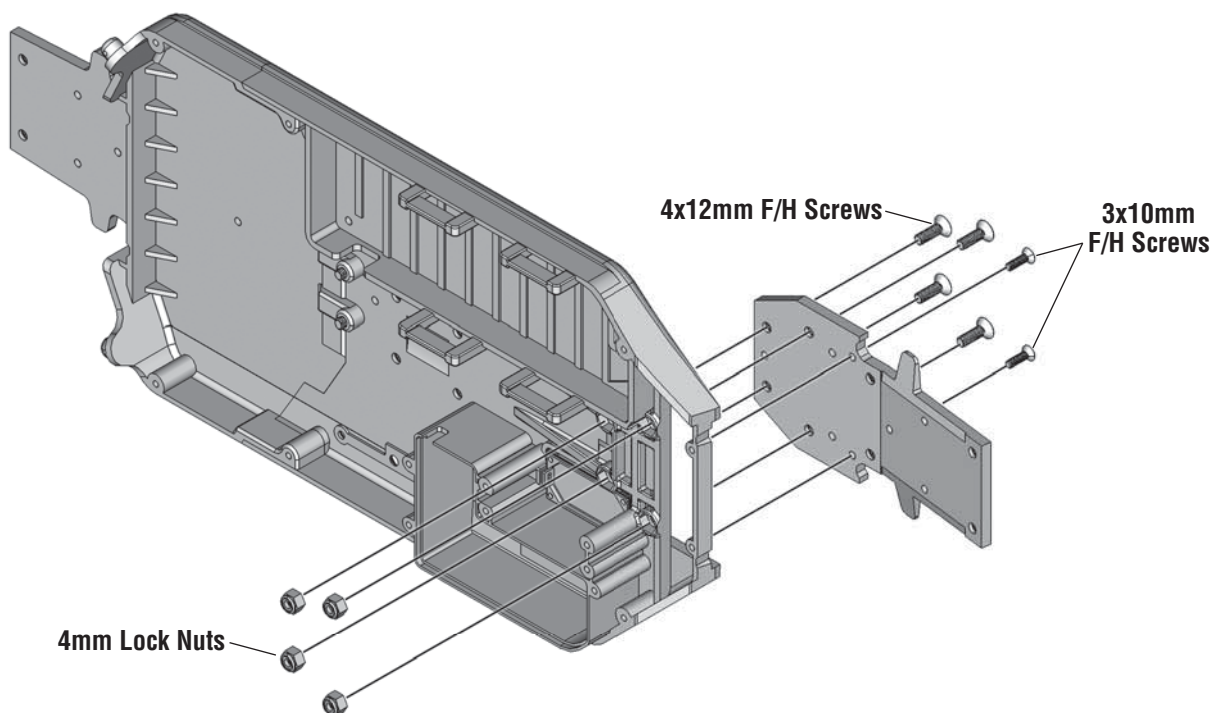
3mm Lock Nut

3mm Plastic Nut

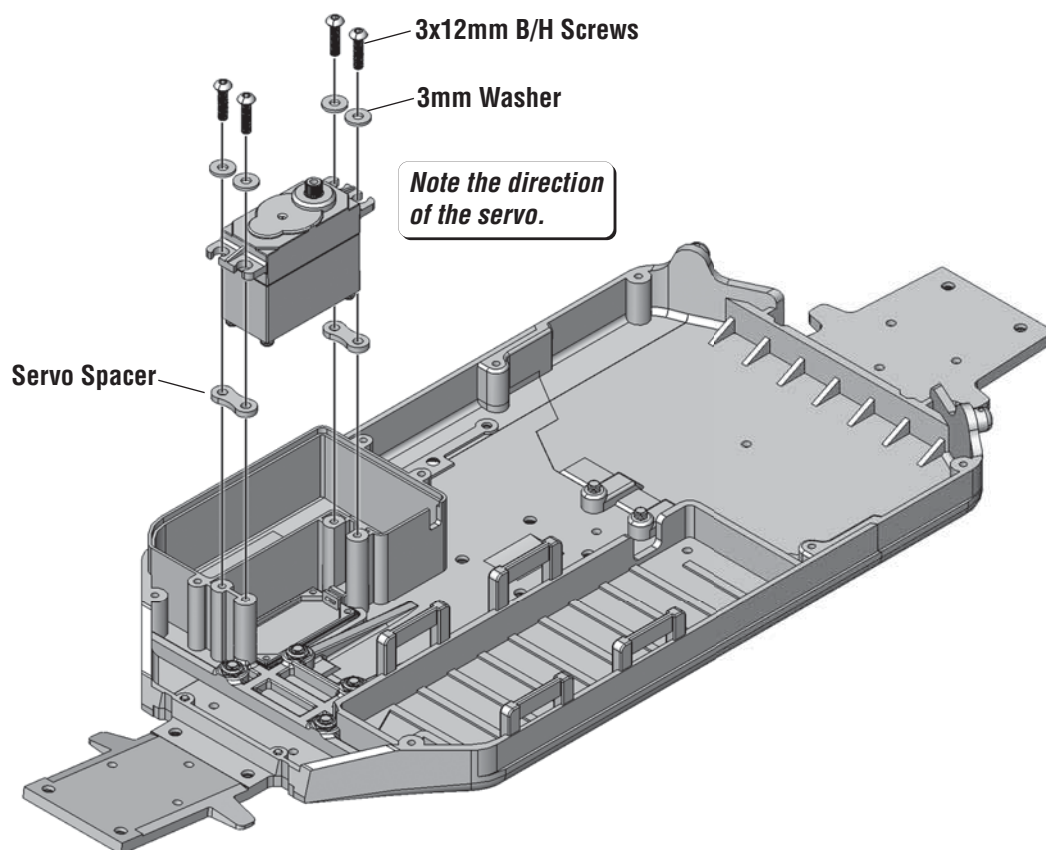
31



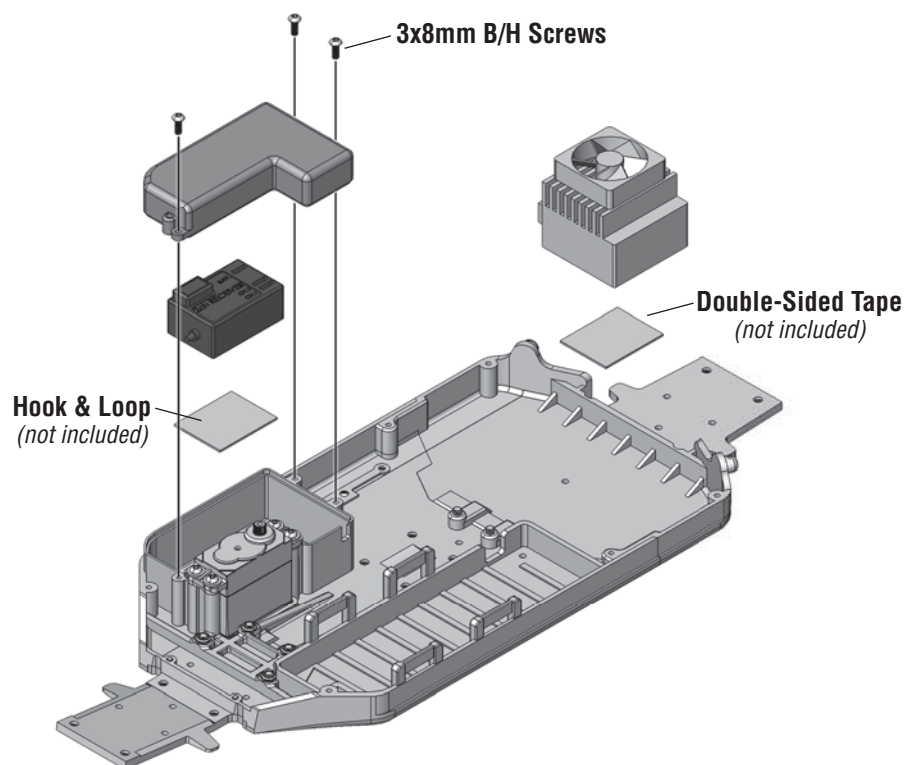
32



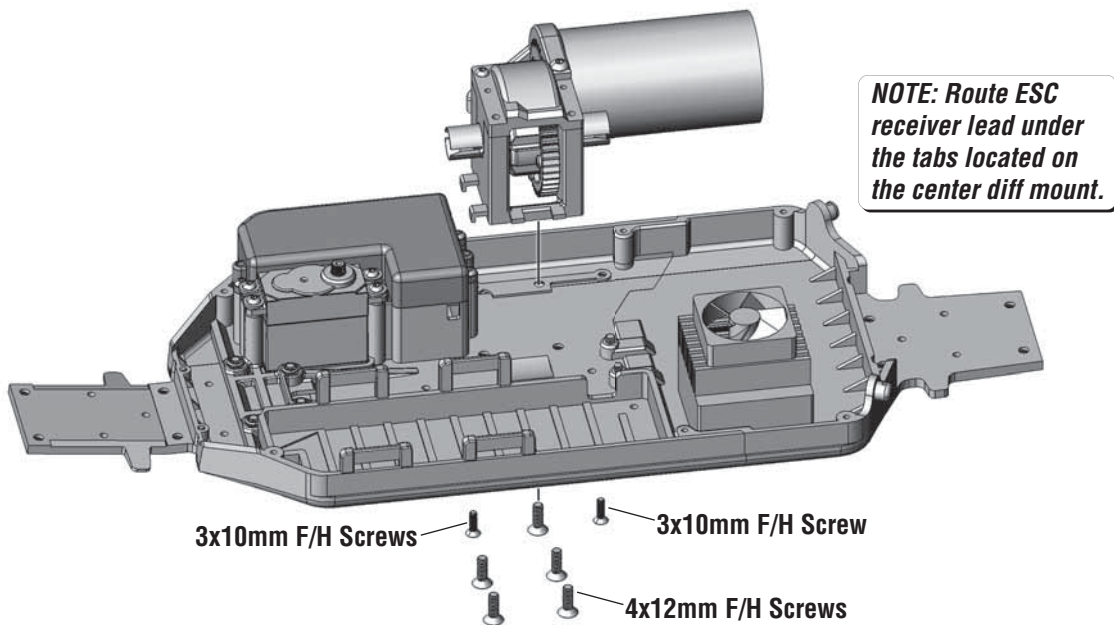
33



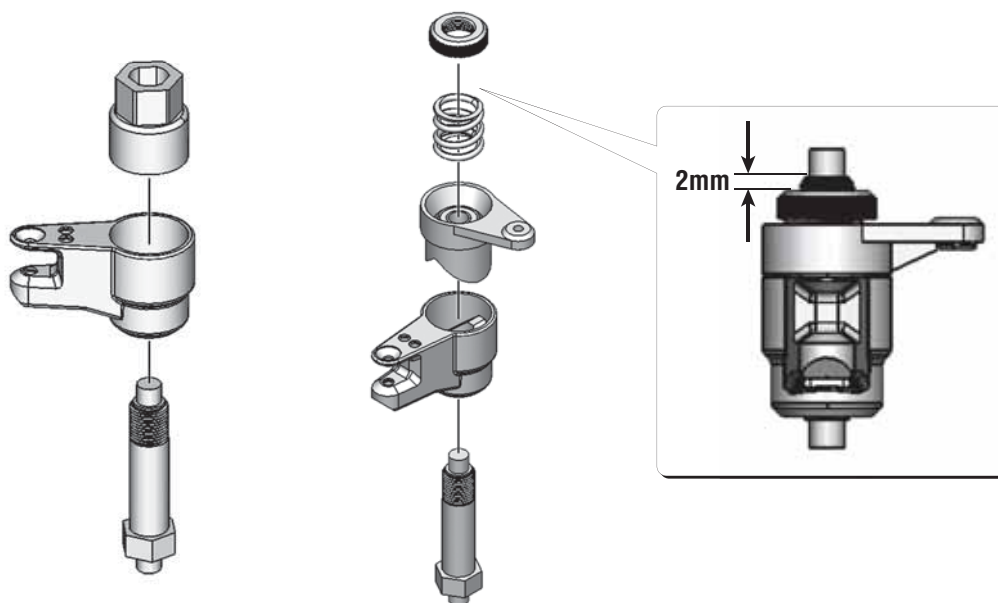
34



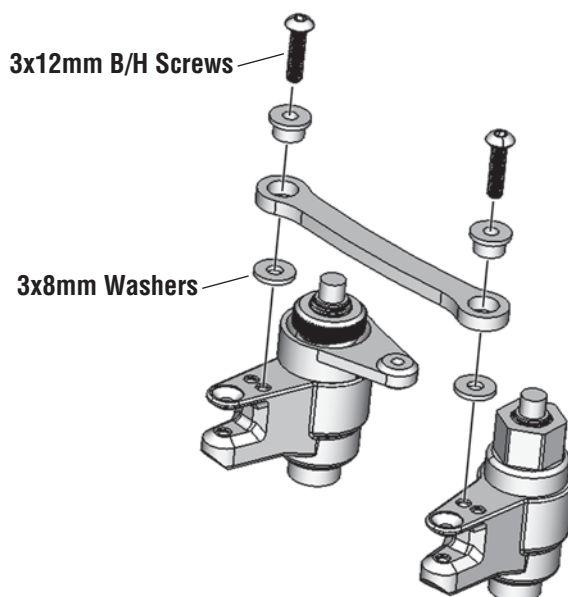
35



36

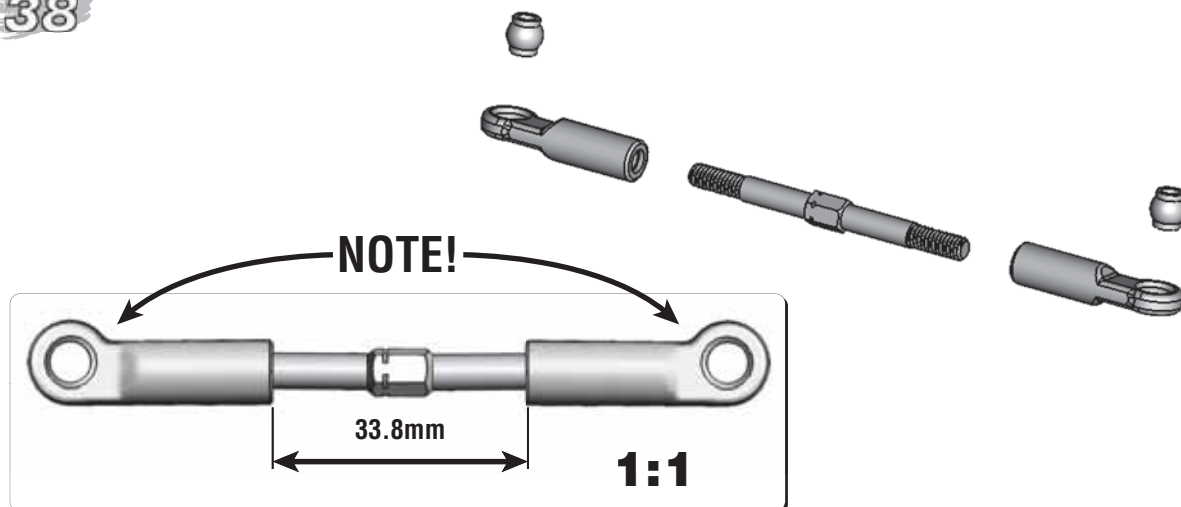


37

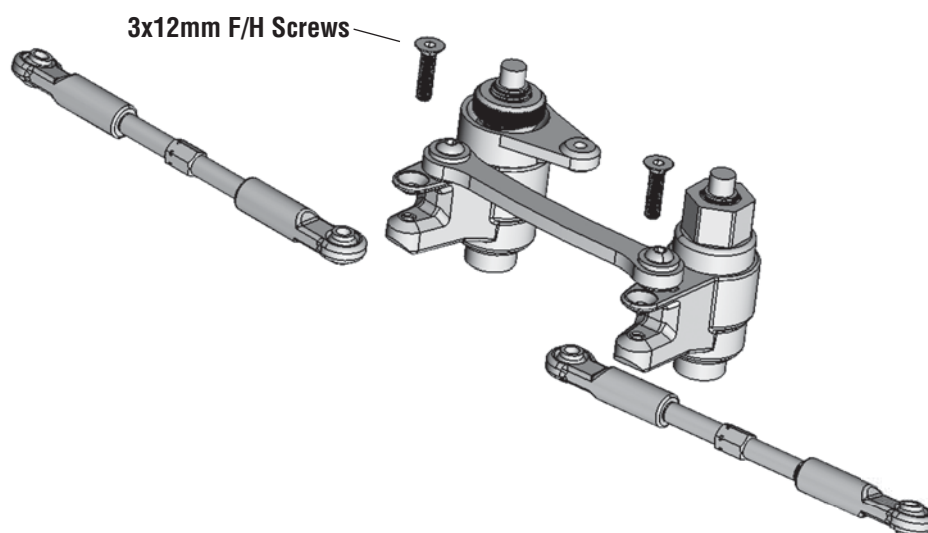


38

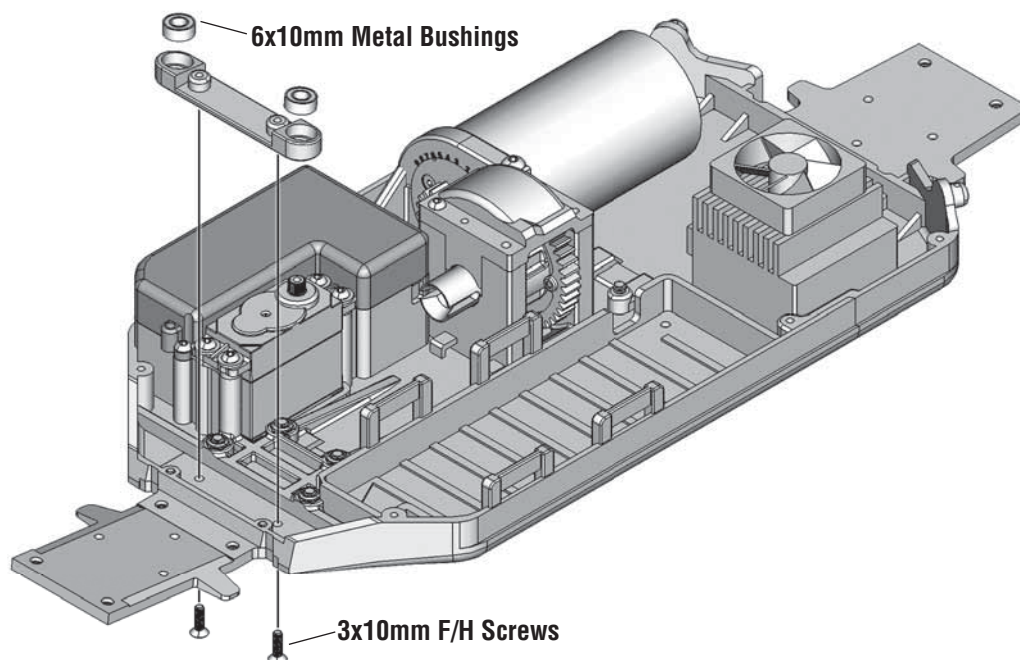
x2



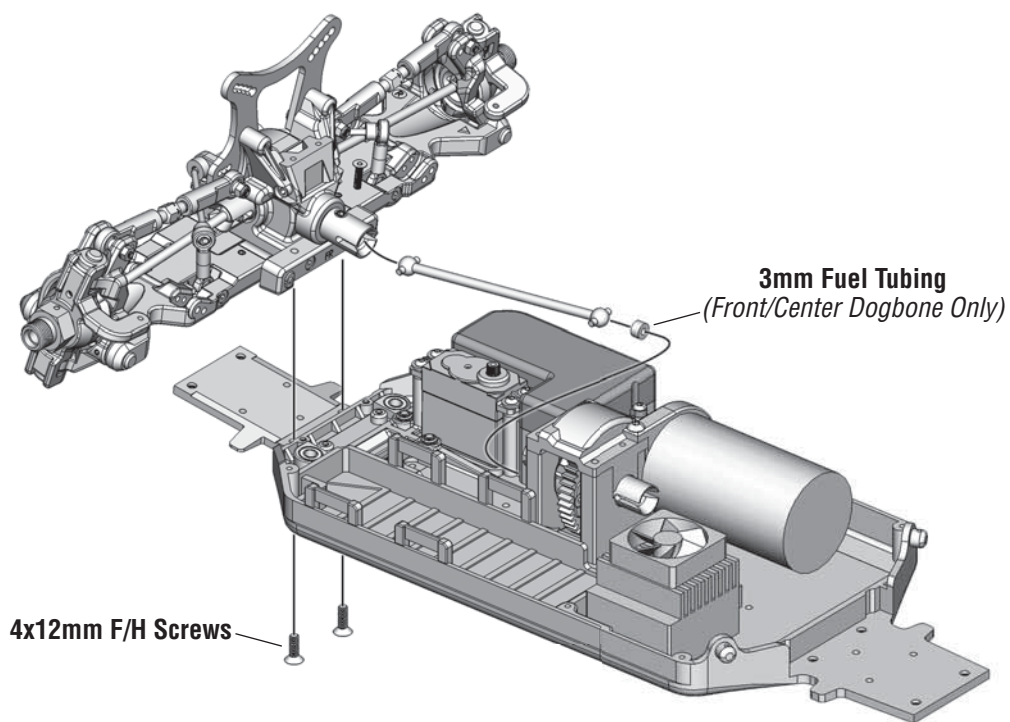
39



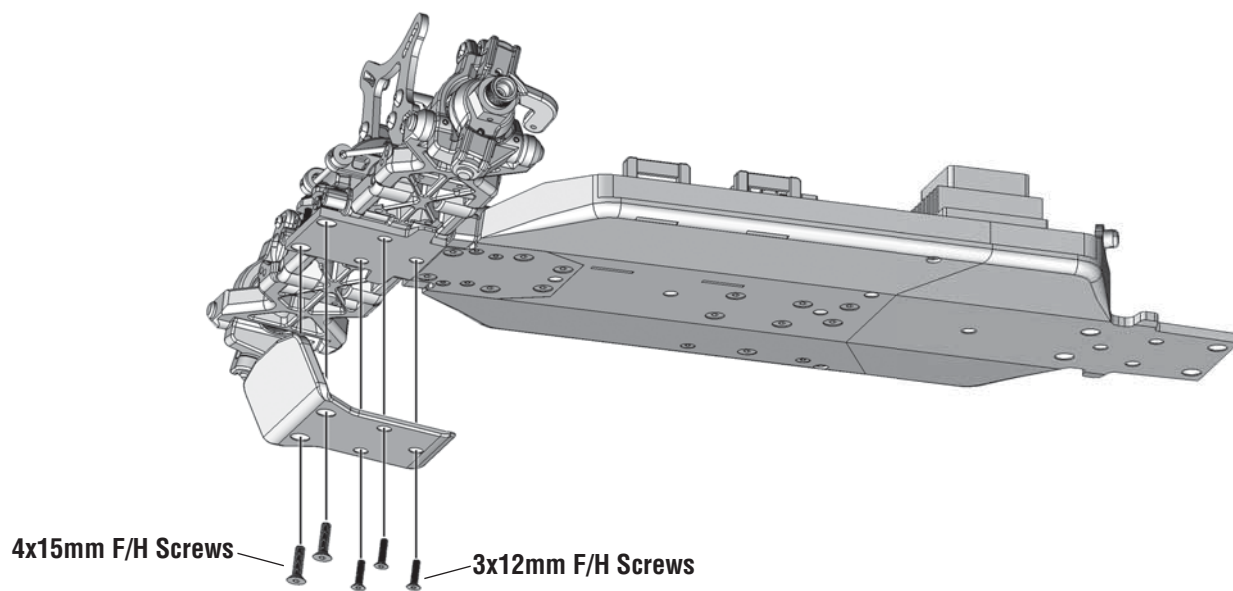
40



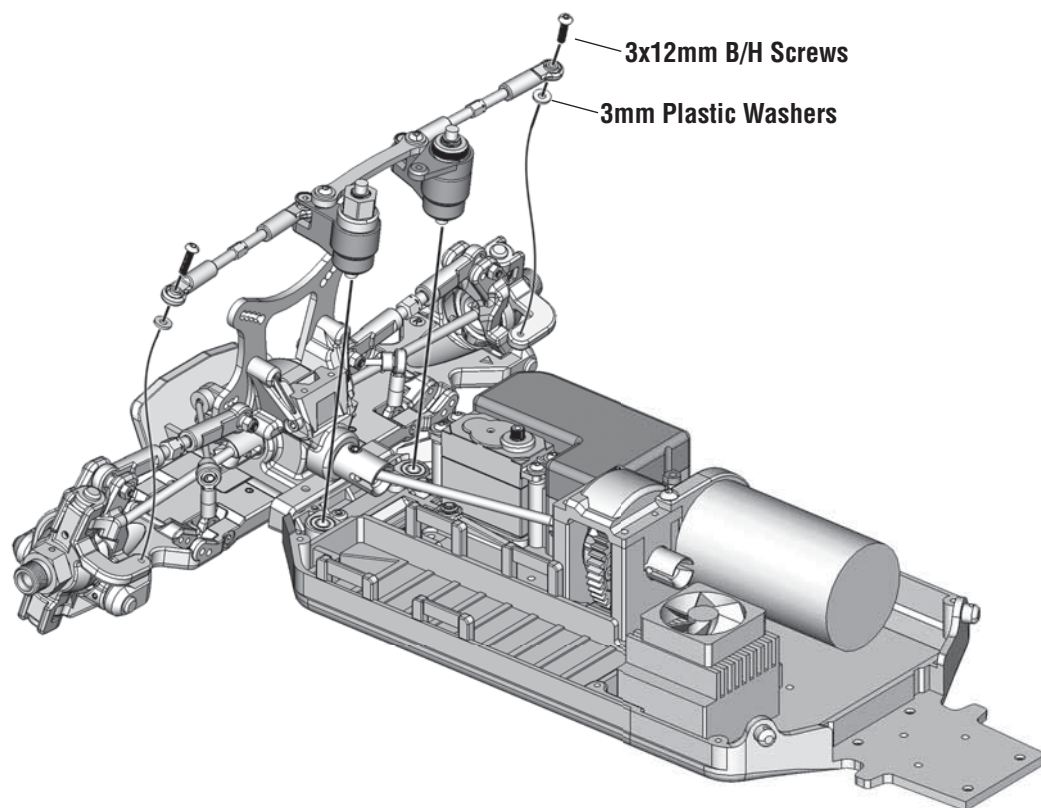
41



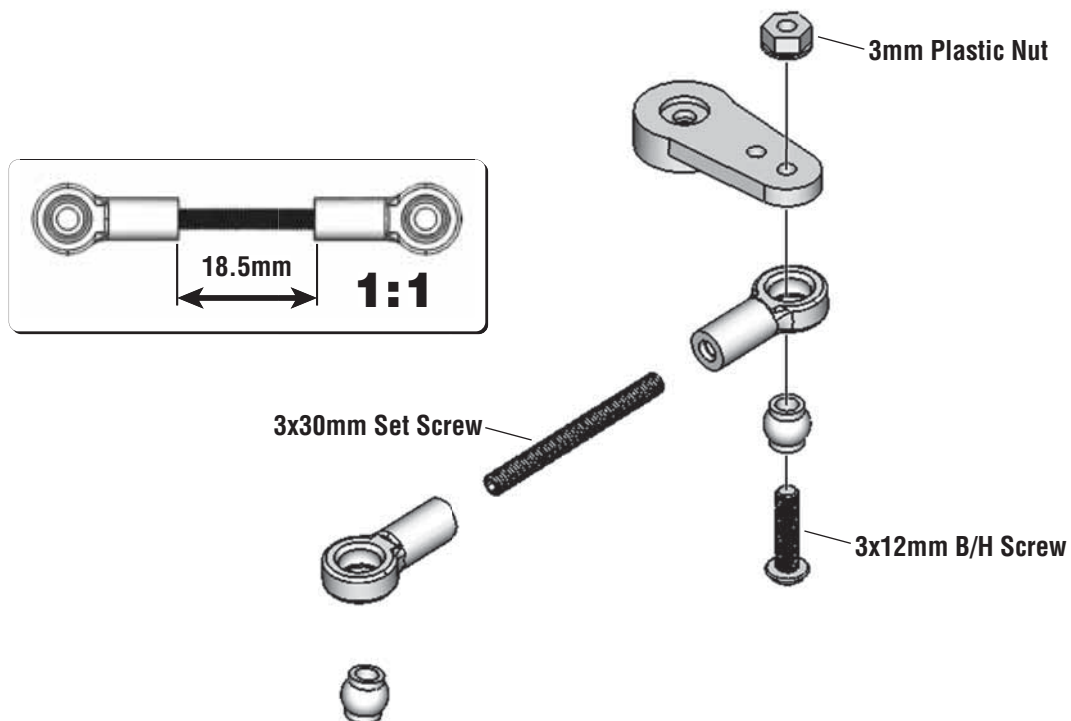
42



43

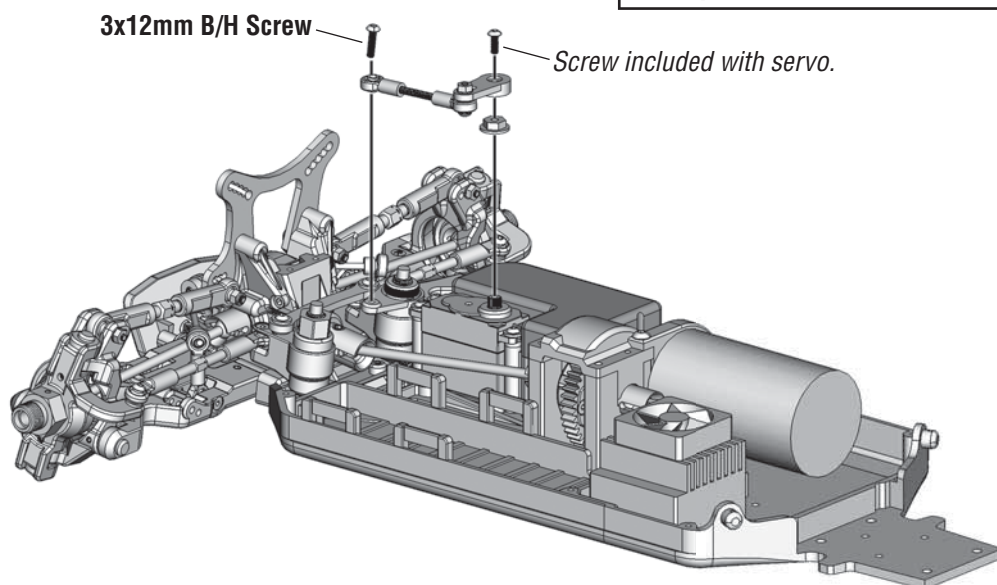


44

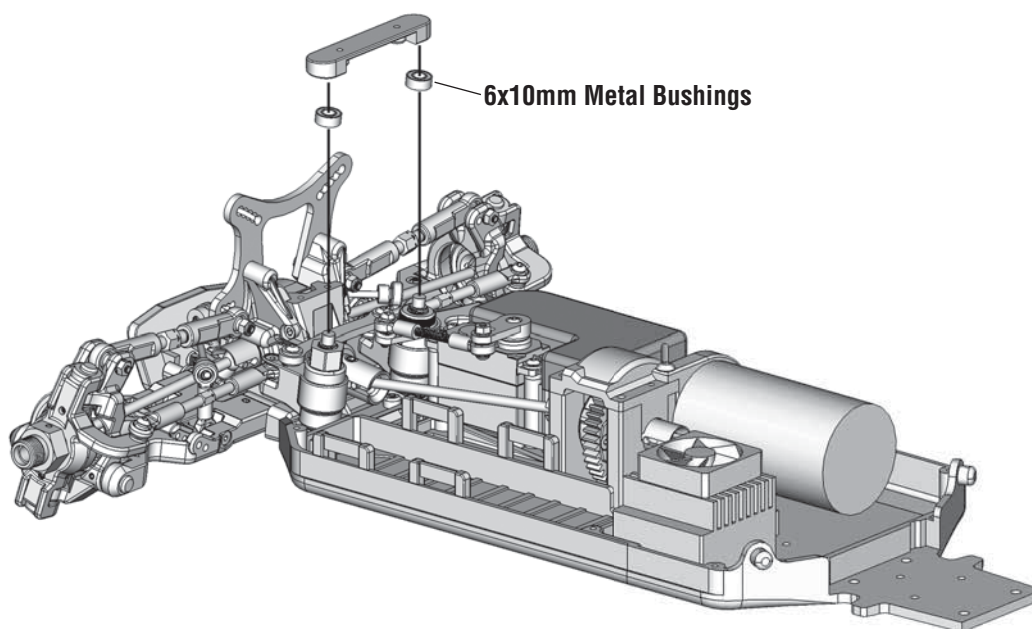


45

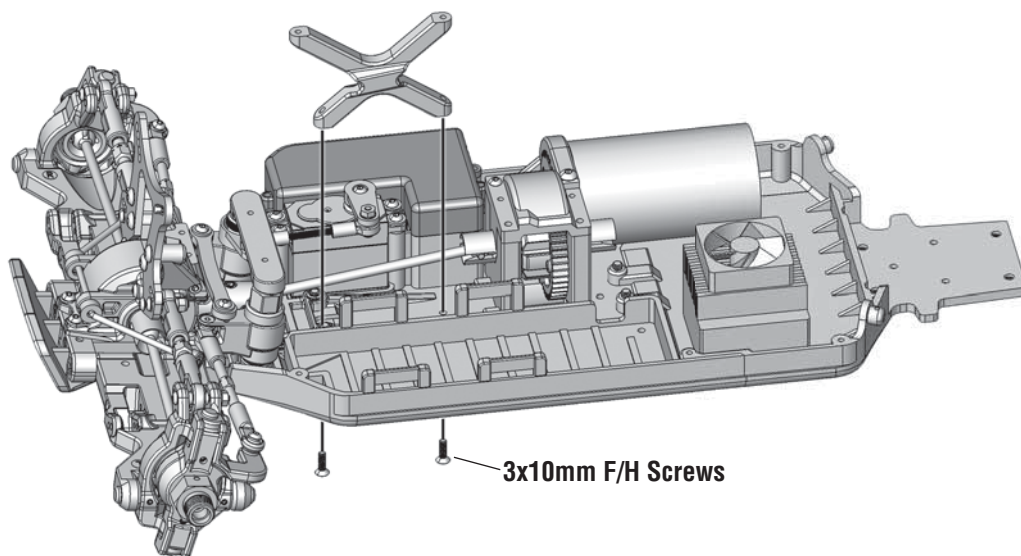
SERVO TYPE	ADAPTER	SPACER
Airtronics/Sanwa	23T	2mm*
Futaba/Duratrax	25T	2mm*
Hitec/Hobbico	24T	0*
KO Propo	23T	1mm*
JR Propo	23T	0*



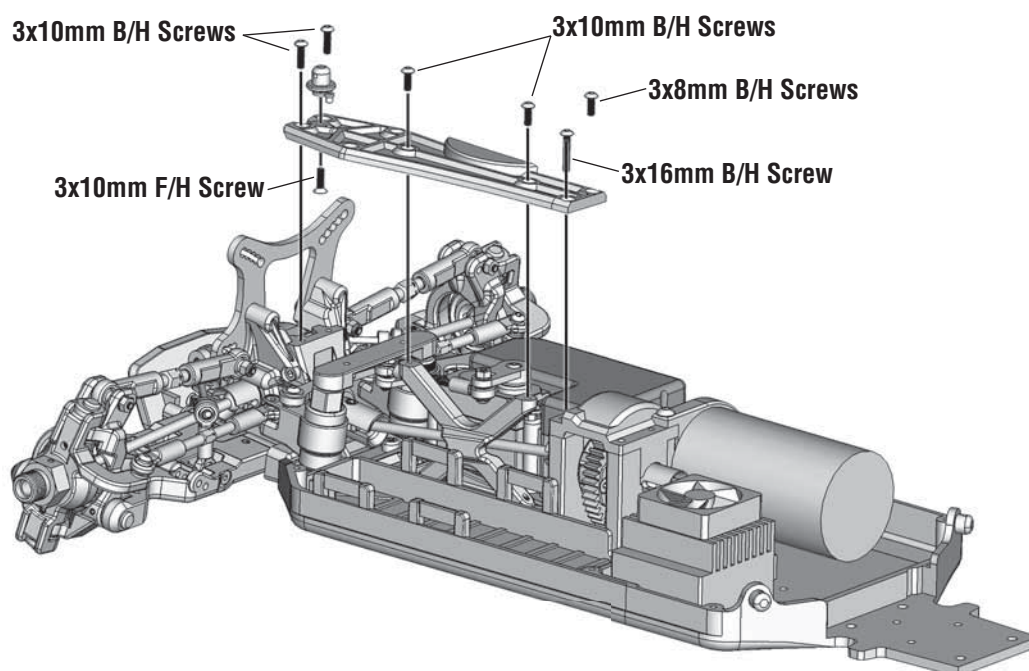
46



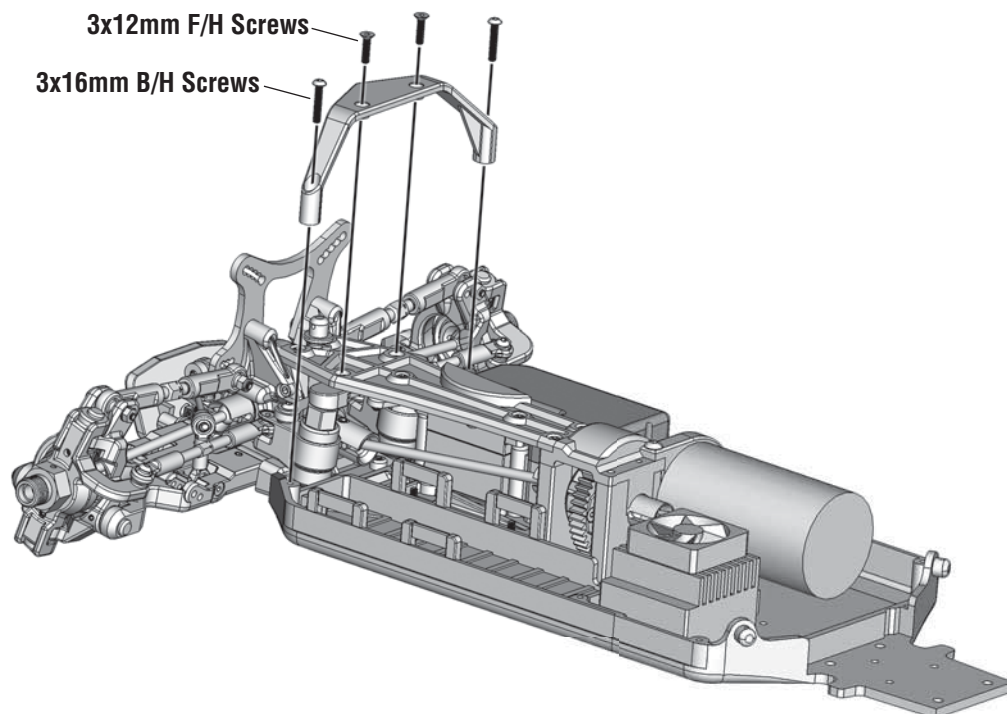
47



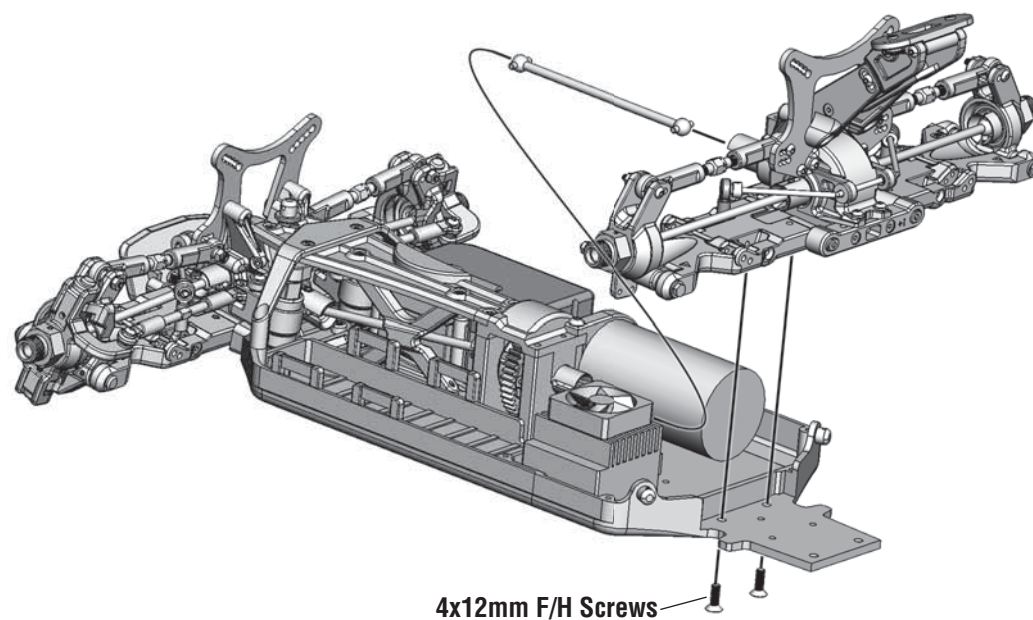
48



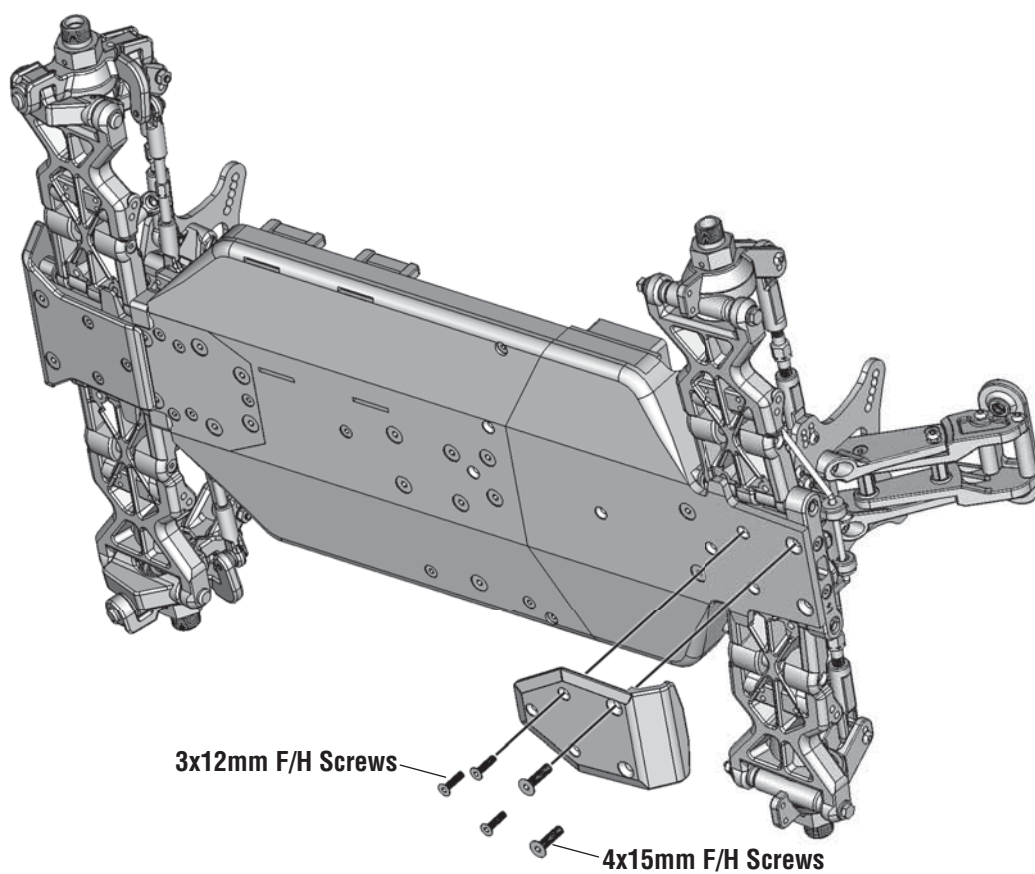
49



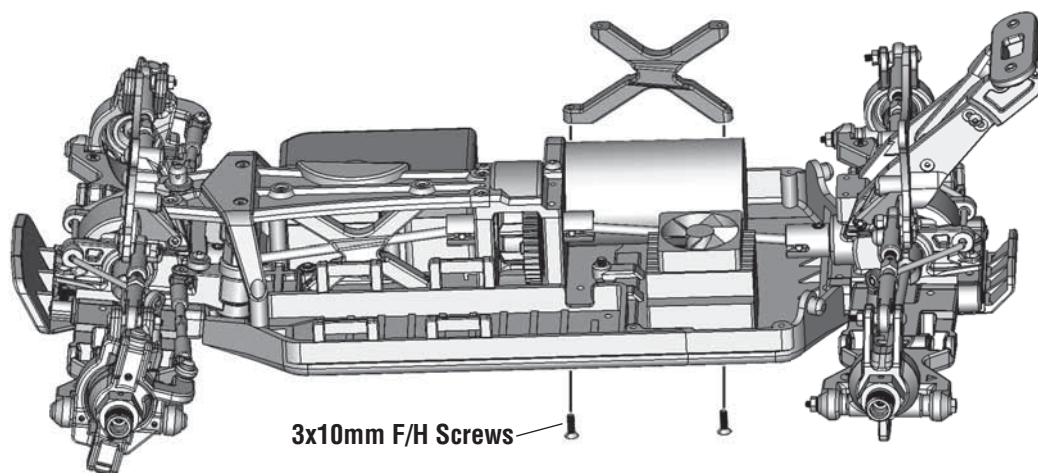
50



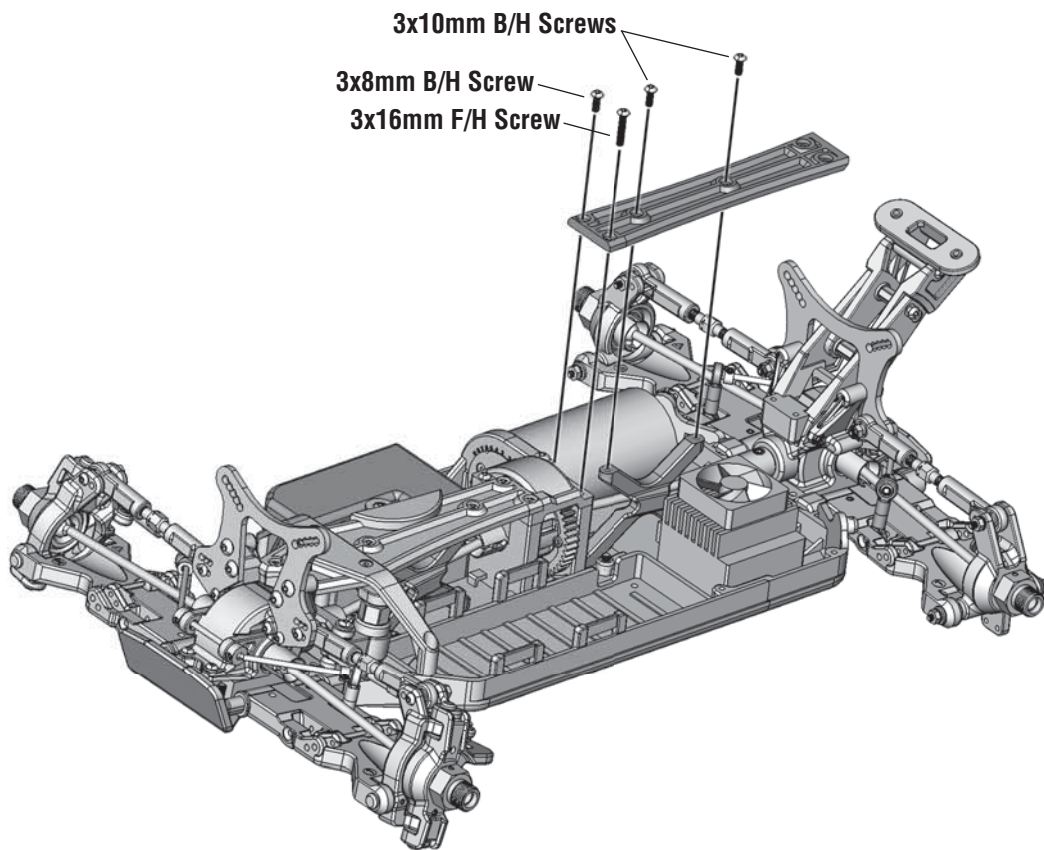
51



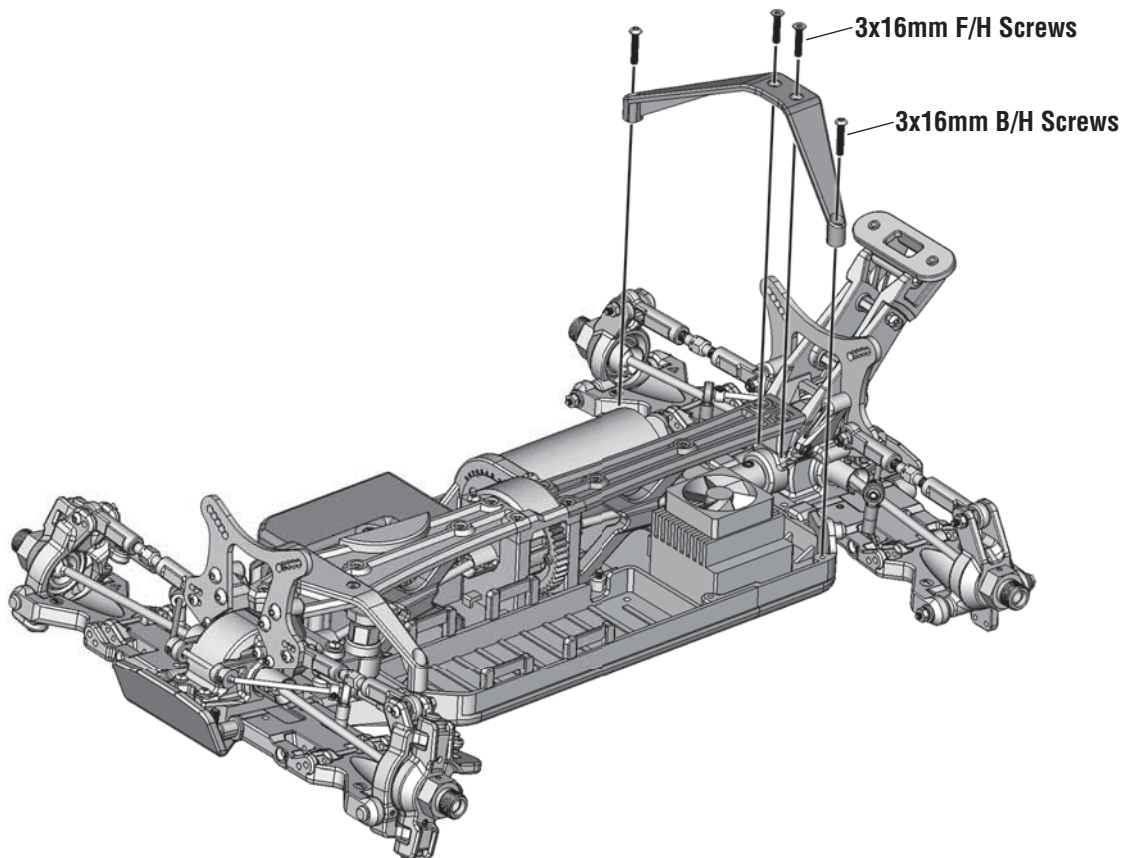
52



53



54

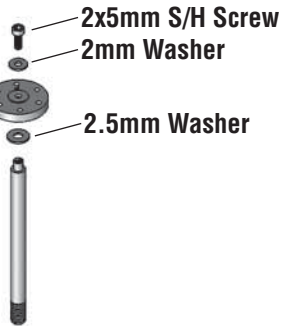


55

Apply a small amount of shock oil to the O-rings before installing.



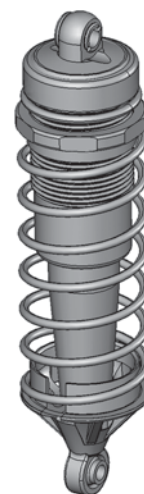
"F" for Front
"R" for Rear



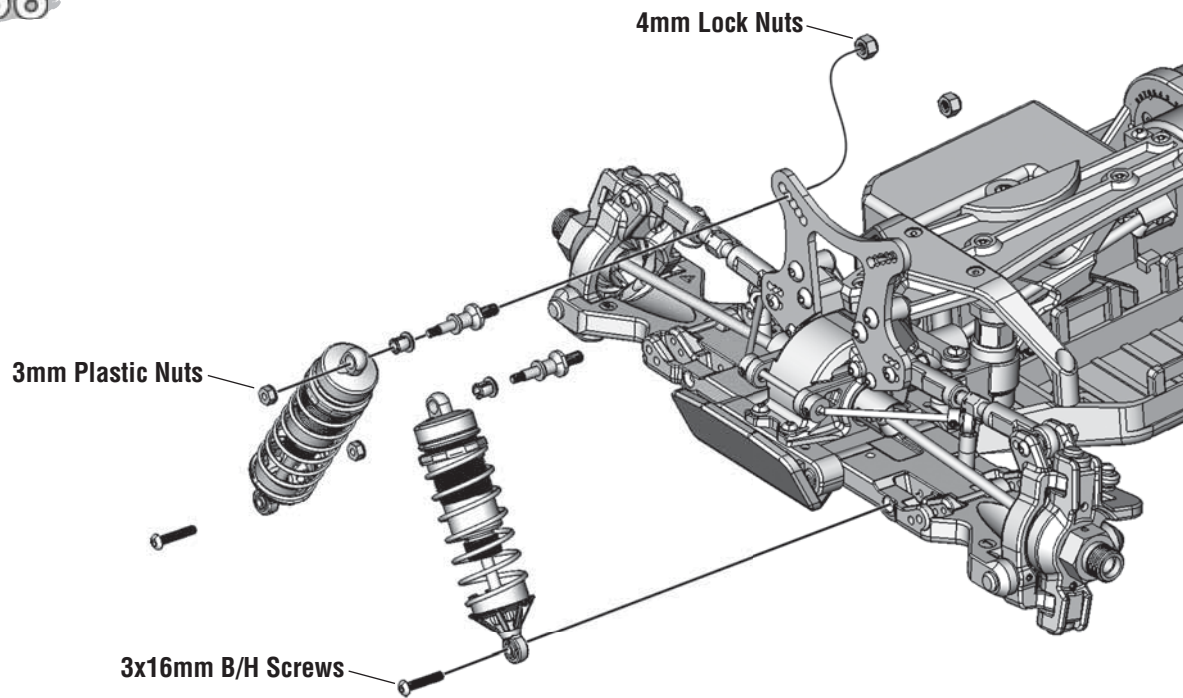
Apply a small amount of shock oil to the shaft before installing.



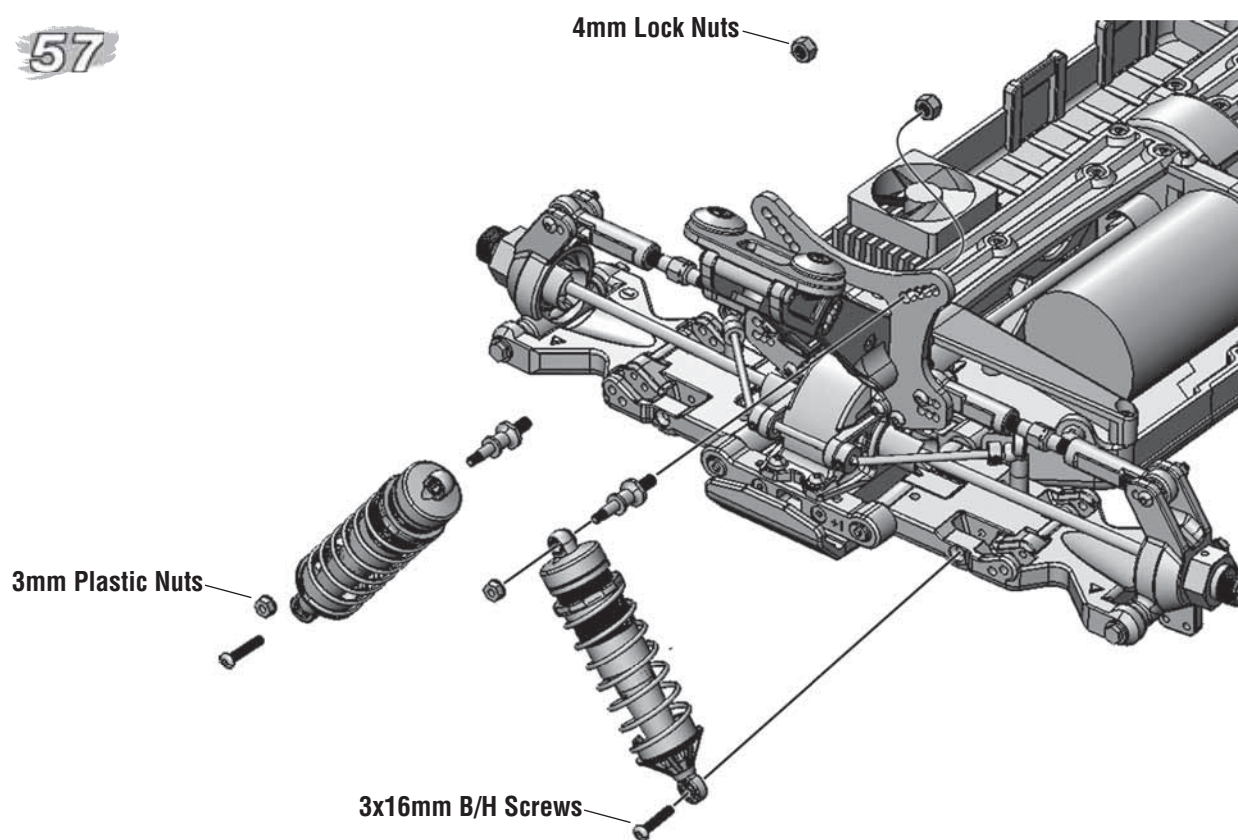
Refer to the tuning guide at duratrax.com for shock oil setup tips.



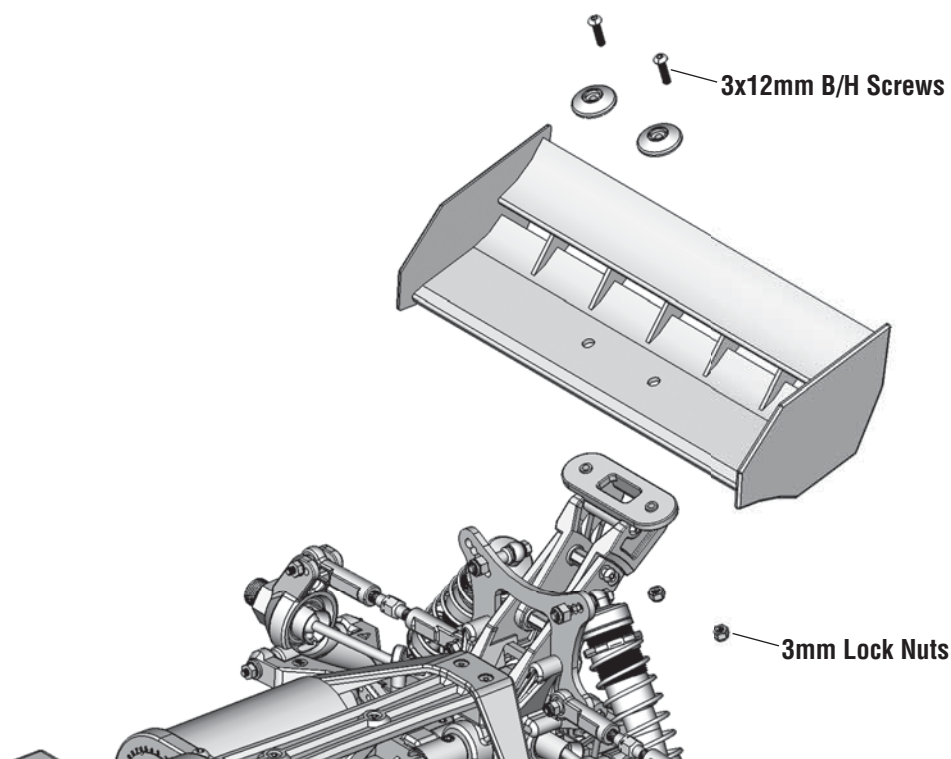
56



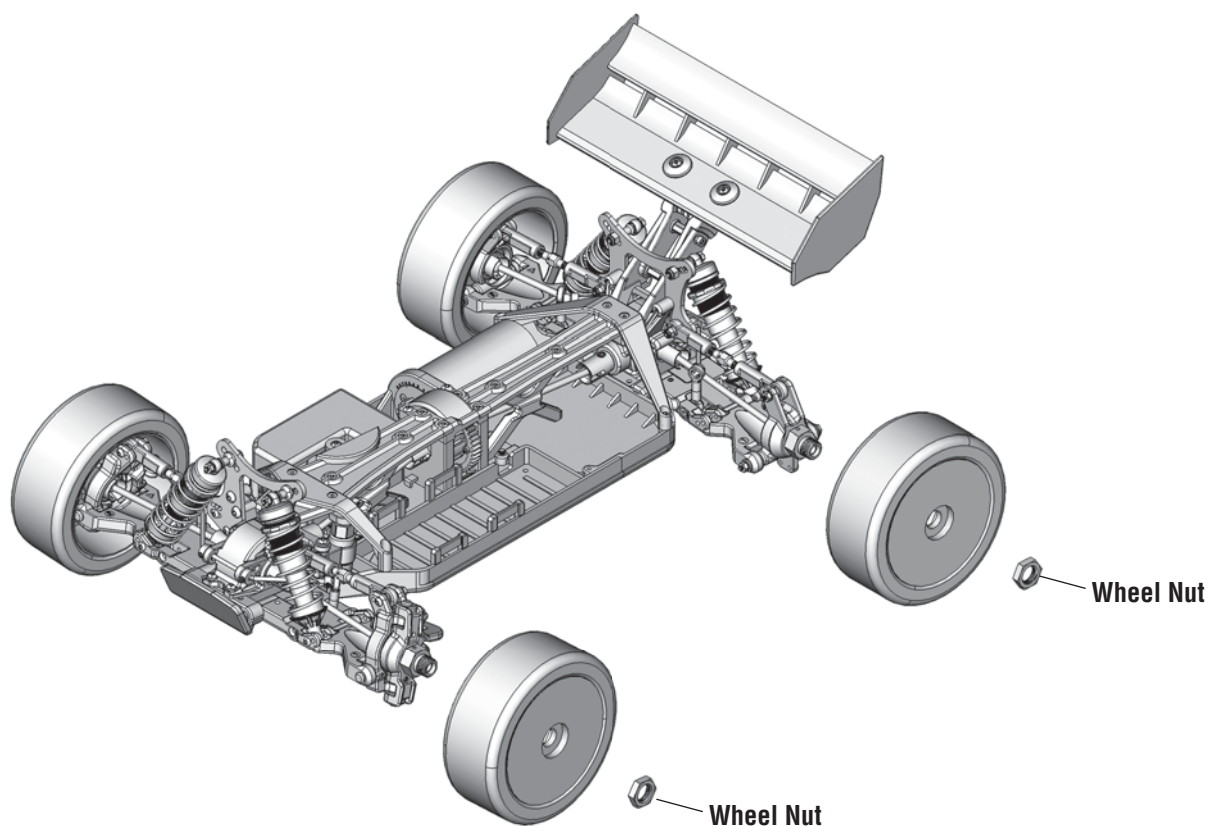
57



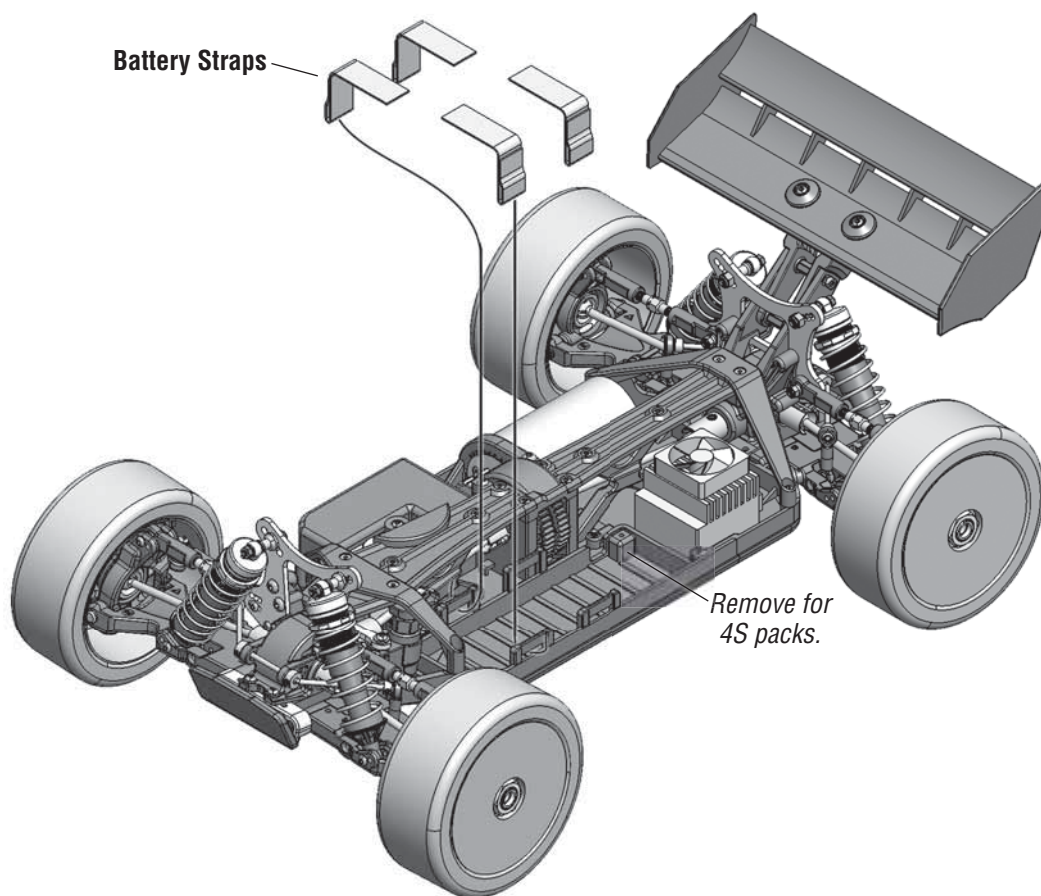
58



59

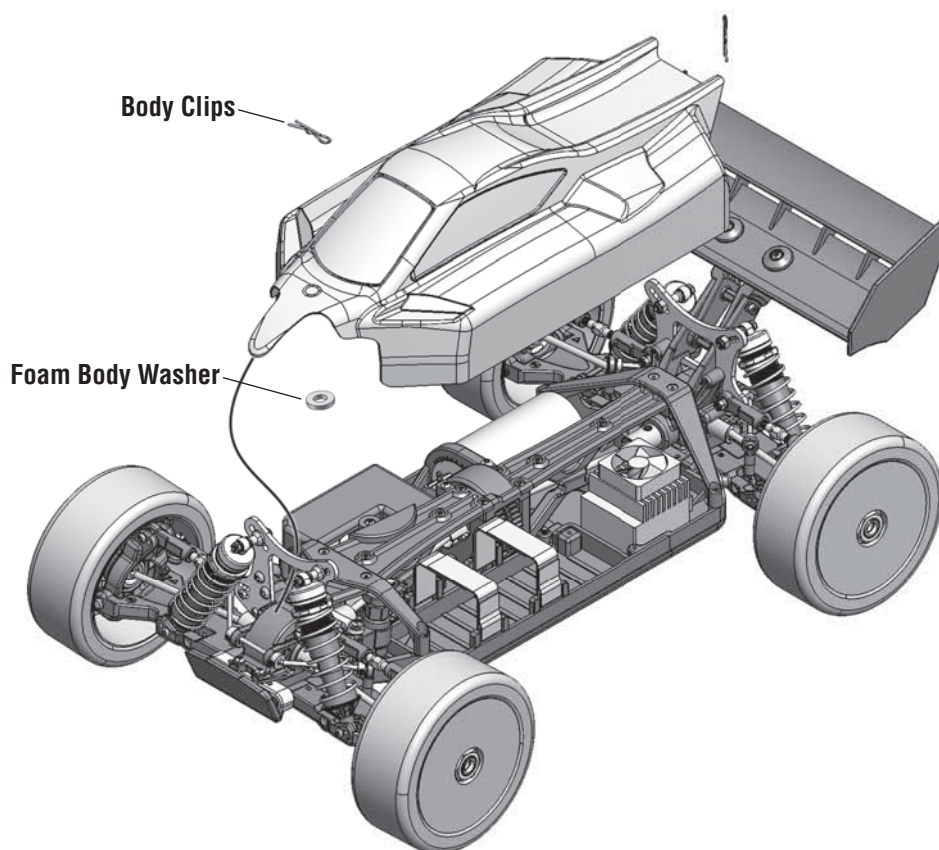


60



8

61



NOTES

DKR8-E

NOTES

DKR8-E

