

AQUACRAFT
Models

ALLIGATOR TOURS™



WARNING:

- Never attempt to swim after a stalled RC boat.
- Never operate your RC boat while standing in the water.
- Never operate your RC boat in the presence of swimmers.
- Always use a Personal Flotation Device (PFD) when boarding and operating your retrieval craft, i.e. Jon boat or duck boat. NOTE: Because of the sharp running hardware included with this RC boat, we do not recommend a rubber blow up raft.
- RC boat running hardware is very sharp. Be very careful when working on and around the metal parts.
- While the motor is running pay close attention to the propeller. Do not come in contact with the propeller at any time the engine is running or serious injury will result.
- AquaCraft products are to be used by ages 14 and over.
- AquaCraft is not liable for personal property

Introduction

Thank you for purchasing the AquaCraft Alligator Tours Airboat! We want the time you spend with your new RC boat to be fun and successful, so please fully read the manual. If for any reason you think this R/C model is not for you, return it to your local hobby dealer immediately. NOTE: Your hobby dealer cannot accept returns on any model after final assembly or after your boat has been operated.

Safety Precautions

- **Never ever attempt to swim after a stalled RC boat. DO NOT get in the water for any reason to retrieve your boat. To aid you in retrieving a stalled RC boat you can use a fishing reel with a tennis ball tied to the end of the line. Or better yet, get yourself a small Jon boat so you can row out and pick up your boat. Remember to use a PFD (personal flotation device) any time you enter your retrieval craft.**
- AquaCraft products are to be used by ages 14 and over.
- Do not touch the propeller anytime the motor is running. Pay equally close attention to items such as loose clothing, shirtsleeves, ties, scarves, long hair or anything that may become entangled in the spinning prop. If your fingers, hands, etc. come in contact with the spinning propeller, you may be severely injured.
- The speed and mass of this boat can inflict property damage and severe personal injury if a collision occurs. Never run this boat in the presence of swimmers or where the possibility of collision with people or property exists.
- Glow engines produce heat. Do not touch any part of your engine until it has cooled.
- This boat is controlled by radio signals, which are susceptible to possible interference from other R/C transmitters, paging systems, or other electrical noise. Before turning your radio transmitter and receiver on, make sure no one else in the area is operating a radio on the same frequency (channel).
- If your Alligator Tours Airboat should happen to stall, water currents will slowly carry it to shore. The bad news is that the boat could be carried to the opposite shore. When surveying areas to run your model, keep variables in mind such as wind direction, size of the lake, etc. It is not advisable to run R/C boats on any free-flowing bodies of water such as creeks or rivers.

Specifications

BOAT SPECIFICATIONS:

Over all Length: 30" (770mm)

Width: 11 ¼" (285mm)

Height: 14" (355mm)

BOAT FEATURES:

Air cooled .34 SuperTigre® Glow Engine

Tough fiberglass hull construction

Twin Air Rudders

Injection molded water resistant radio box

Steel welded propeller cage

9x6 Fiber-filled pusher prop

Easy Fill Fuel Tank

Flotation installed inside the hull

RADIO SYSTEM:

Tactic™ 2 Channel Pistol Grip Transmitter

Tactic 2 Channel RX

Tactic TSX 200 Standard servos (2)

Manual Specifications & Description Changes

All pictures, descriptions, and specifications found in this instruction manual are subject to change without notice. AquaCraft maintains no responsibility for inadvertent errors in this manual.

Warranty Service

AquaCraft will warrant your Alligator Tours Airboat for 90 days after the purchase from defects in materials or workmanship of original manufacture. AquaCraft, at their option, will repair or replace at no charge the incorrectly made part. This warranty does not cover damage caused by crash, abuse, misuse, alteration or accident. To return your boat for repairs you need to provide proof of purchase. Your store receipt or product invoice will suffice. IN NO EVENT SHALL THE PURCHASER BE ENTITLED TO ANY INCIDENTAL, SPECIAL, INDIRECT OR CONSEQUENTIAL DAMAGES, WHETHER RESULTING FROM THE USE, MISUSE OR INABILITY TO USE THE PRODUCT OR FROM DEFECTS IN THE PRODUCT. This warranty gives you specific legal rights and you may also have other rights, which vary from state to state.

Outside USA and Canada, contact local importer for warranty information.

Hobby Services
3002 N. Apollo Drive, Suite 1
Champaign, Illinois 61822
Attn: Service Department

Phone: (217) 398-0007 9:00 am - 5:00 pm CST M-F

E-mail: hobbyservices@hobbico.com

Standard Repair Service

After the 90-day warranty has run out you can still have your Alligator Tours Airboat repaired for a service fee by the experts at AquaCraft™. To speed up the repair process, please follow these four simple steps:

IMPORTANT NOTE:

For standard repair service you must specify whether you wish the charges to be billed COD or if you wish to be notified of the charges so you can send a check.

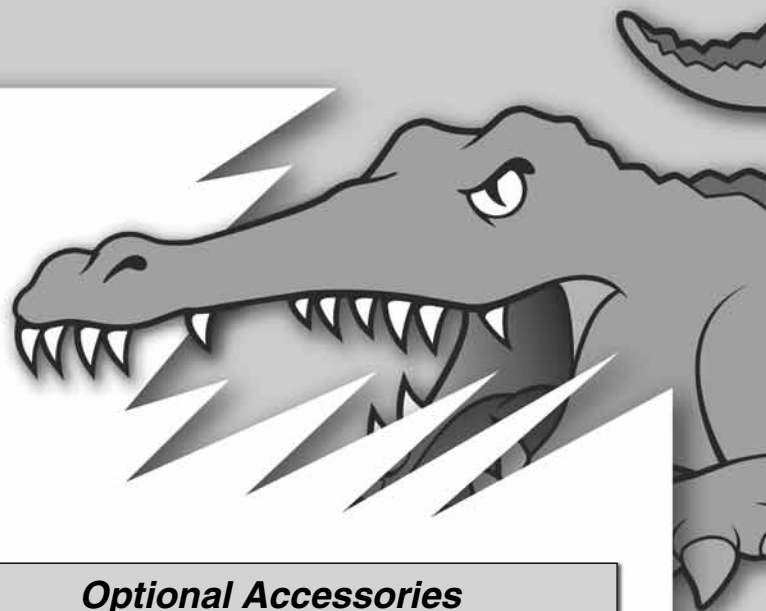
1. It is best (recommended) to return the ENTIRE system, boat and radio.
2. Make sure batteries are removed from the transmitter and radio box of the boat.
3. Send written instructions which include a list of all items returned, and a THOROUGH explanation of the problem or problems requiring service. Be sure to include your return address and daytime phone number. If you have access to e-mail, please provide us with your e-mail address to help speed communication.
4. Send to Hobby Services at the address above.

Required Accessories

Small personal retrieval system: This might be as simple as a tennis ball tied to the end of a fishing reel, or a fully equipped AquaCraft Hammer™ EP RTR (AQUB10**) towing an empty pop bottle behind a 10 foot line. Better yet, a small Jon boat and personal flotation device (PFD) are “preferred” so you can row out and properly retrieve your boat.

YOU WILL ALSO NEED:

- 12 AA batteries
- 10 to 15% nitro aircraft glow fuel (Do not use “boat fuel” in this product)
- Hobbico® TorqMaster™ 12V Starter (HCAP3200)
- Hobbico TorqMaster 12V Battery (HCAP0800)
- Hobbico HotShot™ 2 Glow Igniter (HCAP2520)
- DuraTrax® Kwik Pit™ 500cc Fuel Bottle (DTXP0150)
- Hobbico® After Run Engine Oil (HCAP3000)



Optional Accessories

As with any hobby, it is a good idea to assemble a useful collection of tools and accessories to bring along when you head to the pond. Here are some items you will want to keep handy:

- Extra “AA” Batteries
- Extra Glow Plugs
- Glow Plug Wrench
- Extra prop
- Small standard screwdriver
- Pliers (HCAR0625)
- Hobby Knife (HCAR0109)
- Metric Hex L-Wrench Set (HCAR0521)
- DuraTrax 6V NiMH Receiver Battery (DTXM2011)
- DuraTrax A/C NiMH Charger (DTXP4085)
- Hobbico Switch Harness (HCAM2400)

OTHER USEFUL ITEMS TO HAVE ON HAND:

- Waders or rubber boots
- Paper Towels
- Spray-On Cleaner
- Sunglasses
- Sun block
- Folding table
- Lawn chair
- First-Aid kit
- Cooler with plenty of ice and soda
- Canopy or shelter

Boat Terminology

- BOW:** The front of the boat.
- STERN:** The back of the boat.
- PORT:** This is the left side of the boat when aboard and facing the front (bow). An easy way to remember this is that port and left both contain four letters.
- STARBOARD:** This is the right side of the boat when aboard and facing the front (bow).
- HULL:** The body of the boat.
- DECK:** The top of the boat.
- TRANSOM:** The back of the boat.
- KEEL:** The center of the bottom of the boat.
- RUDDER:** The hinged vertical plate/s mounted at the transom that controls steering

Assembly

HAND HELD TRANSMITTER



❑ 1. After removing the transmitter and transmitter antenna from the box, line up the antenna to the hole in the top of the transmitter. Slip the antenna in and lightly screw the antenna into the transmitter. Do not over tighten. Give the antenna a light tug to make sure it is properly installed.



❑ 2. Slide off the battery door from the bottom of the transmitter.



❑ 3. Install 8 "AA" batteries into the transmitter in the configuration molded into the battery floor.



❑ 4. Reinstall the battery door onto the bottom of the transmitter.



❑ 5. Turn the transmitter "ON" using the switch on the transmitter's left side. The battery level indicator light (LED) should glow green. If the light is flashing the batteries are low and need to be replaced.

RECEIVER BATTERIES



❑ 1. Using a #1 Phillips screwdriver (small), remove the two (2) Phillips head screws from the top of the radio box. One is located under the front seat of the boat and the other behind the back seat.



❑ 2. Remove the seat assembly as well as the top of the radio box and lay them to the side.



❑ 3. Install 4 "AA" batteries into the battery holder following the diagram in molded in the bottom of the holder.



❑ 4. Slide the battery box back in the radio box, carefully tucking the wires in the box.

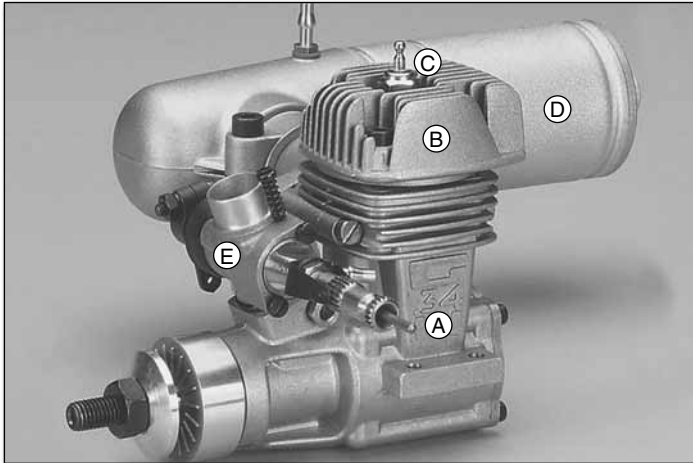


❑ 5. Place the radio box cover as well as the seat assembly in place and reinstall the screws. Be careful to not overtighten.



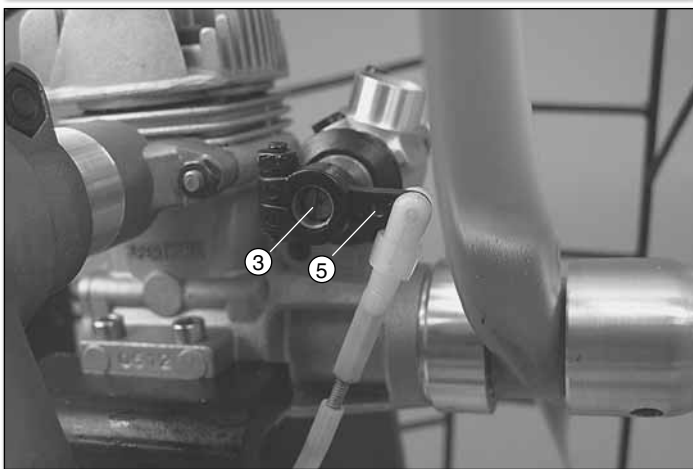
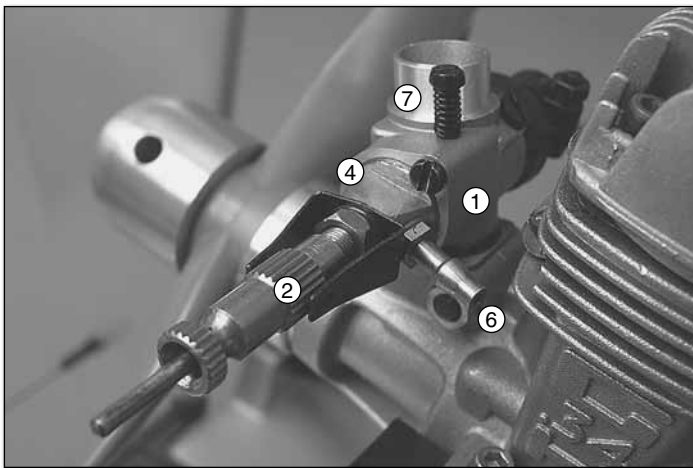
At this time you can install the decals on the boat. You can use the pictures on the box to help you place the decals. Your Alligator Tours Airboat is now ready for operation.

The SuperTigre .34



Parts of the engine:

- | | |
|------------------|---------------|
| A. Crankcase | D. Muffler |
| B. Cylinder Head | E. Carburetor |
| C. Glow Plug | |



Parts of the carburetor:

- | | |
|----------------------|--------------------------------|
| 1. Body | 5. Throttle arm |
| 2. HSN (Needle) | 6. Fuel Nipple |
| 3. LSN (Idle Needle) | 7. Idle speed adjustment screw |
| 4. Spray bar | |

Your carburetor has been set from the factory but differences in altitude, temperature and type of fuel can have an effect on the factory setting. The factory carburetor settings for your SuperTigre .34 are:

- HSN (#2): 1-1/2 Turns out
- LSN (#3): 5 Turns out
- Spray bar (#4): Fuel nipple aligned with lowest cooling fin on the engine (20° counterclockwise)

The above setting should get you going but should be considered a starting point and might not be the over all best setting for your motor. If you are having troubles starting your motor you might want to revert back to the factory settings and start over.

UNDERSTANDING & ADJUSTING YOUR CARBURETOR:

The SuperTigre carburetor has two main adjustments and one sub adjustment. The two main adjustments are the HSN (High Speed Needle) and the LSN (Low Speed Needle). The sub-adjustment is the Spray Bar.

Turning or what we call "tuning" your HSN adjusts the amount of fuel entering the motor during high speed operation (the mixture). The LSN adjusts the fuel mixture during idle and the spray bar adjusts the mixture during the transition from idle to full speed operation. The more you turn in (lean out) either the HSN or the LSN, the less fuel there is entering the engine. This in turn makes the most power but can cause a condition called "a lean run". A lean run can damage your engine so always adjust your engine on the rich side. When properly adjusted, the Spay Bar allow the engine to accelerate with very little hesitation.

The idle speed adjustment screw is located on the top of the carburetor body. Turning this clockwise allows a faster idle setting; turning it counter clockwise lowers the idle speed.

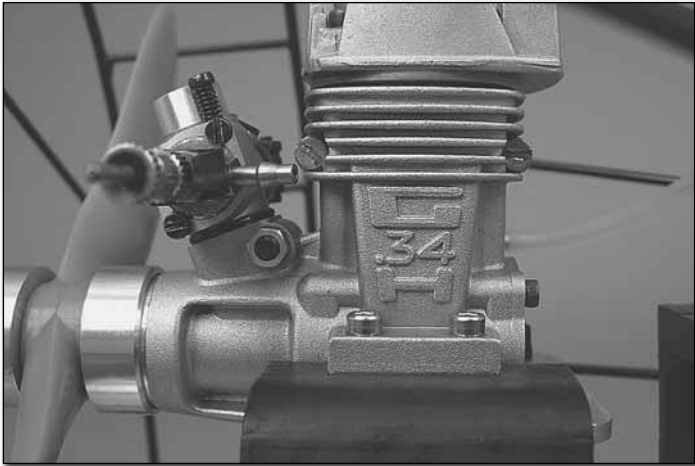
LISTEN TO YOUR MOTOR:

As you adjust your engine you are going to want to listen for what we call the 4-cycle/2-cycle break. The 4-cycle/2-cycle break is a point when your engine goes from a slower speed crackling sound to a smooth running, high pitch sound. It's not hard to hear this and you will know when you have found it: your motor will start making a lot of power.

OPTIMUM ENGINE SETTINGS:

HSN: Your engine will last the longest and make the best power if you tune and operate your engine to just over the point of the 4-cycle/2-cycle break. You need to make sure you have it rich enough so you do not have a lean run and risk damaging the motor. If you're in doubt as you start your new engine, err on the rich side.

LSN: You want your LSN set so that when the motor is idling it will run for a few minutes without quitting. One way to determine this is to pinch the fuel line with fingers about 1" [25mm] from the carburetor as the engine is running at idle. If the motor stops instantly as you pinch the line, your LSN is set too lean. Turn the needle out 1/2-turn and try again. If your engine slowly picks up speed and after 10 seconds or so quits, you are likely just a tad rich. It's a good idea to let the engine run for a minute or two between pinch tests. This way you can be certain the new setting has taken effect.



Spray Bar: Adjusting the spray can only be done after the engine is fully broken in. What you want to achieve is a smooth transition from idle to full throttle. Loosening the two screws located on the side of the carburetor that hold the spray bar will allow you to rotate the spray bar to optimize the mid range. Moving the spray bar even a tiny amount (a few degrees) can have a large effect on the way the engine runs. It will not only affect the midrange but the top end and the idle as well, so only move it a small amount at a time. Turning the spray bar clockwise will richen the mixture and counter clockwise will lean it, but only to a point. When the spray bar is turned clockwise further than 20° it will start to go lean again. Too far counterclockwise (a full 40°) and the engine just will not run well at all.



Operating your Alligator Tours Airboat

POWER UP AND POWER DOWN SEQUENCE

It is important to follow the below sequence each time you operate your boat.

Power up before a run:

1. Fill the fuel tank.
2. Turn on the transmitter.
3. Turn on the Receiver (switch located on the top of the boat's radio box)
4. Attach the glow igniter to the top of the glow plug.
5. Start the engine using an electric starter.
6. Remove the glow igniter and let the motor warm up.

Power down after a run:

1. Retrieve the boat. **Do not touch the engine or muffler!**
2. Turn the receiver switch off.
3. Turn off the transmitter.

BREAKING IN YOUR ENGINE

Your SuperTigre .34 engine uses ABC construction. ABC stands for:

Aluminum piston operating in a
Brass material,
Chrome plated sleeve.

You don't want to run the motor too rich during break in (running in). Operating the motor too rich will not allow the internal parts to warm up correctly. In doing so the piston and liner might not get properly seated. Lean it until it is running just on the edge of what is known as the 4 cycle - 2 cycle break, and then gradually work leaner with each run (just a click or two). You should also use a fuel that contains castor oil in the lubrication mix. Castor oil helps the engine run better and is a better overall lubricant for our ABC engines. Full-synthetic fuels have been known to cause difficulties in the operation of ABC model engines. Once properly broken in, your ABC-type engine will serve you well and deliver reliable performance for years to come.

We recommend "running in" the engine at full speed for at least 6-8 full tanks of fuel before you adjust it for top performance.

LAUNCHING & DRIVING YOUR AIRBOAT

After starting the engine use extreme care handling the boat. Make sure you grab the boat by the handle at the front of the prop cage. Carefully walk to the water line and place the boat in the water. Here is the part where we usually say launch the boat in water that is free of weeds and small debris. However, this time we are not going to say that. As a matter of fact, we recommend just the opposite...

Enjoy Driving your Alligator Tours Airboat!

(Typical run times are in the 10 to 12-minute range.)

If Your Airboat Flips

If you should happen to flip your Alligator Tours Airboat you are going to need to remove any water that might have entered the motor. We recommend removing the glow plug, hold the boat upside down and turn the motor over a few times by hand to remove the water. After most of the water has been removed leave the glow plug out and turn the motor over with the electric starter expelling the rest of the water. Make sure you hold a rag over the glow plug hole to avoid spraying water all over the place. NOTE: Be careful to keep that rag and fingers away from the spinning prop. Re-install the glow plug and start the engine. It is best to start the engine after you have flipped the boat to make sure **ALL THE WATER IS OUT OF THE ENGINE**. It is also a good idea to open the radio box to make sure no water entered the radio compartment.

Maintenance

After you're done boating for the day you are going to want to add some after run oil to the engine to protect the internal parts. We recommend removing the glow plug, opening the carburetor all the way to full throttle and placing 10 to 12 drops of after run oil down the barrel of the carburetor. Place a rag over the glow plug hole and turn the engine over with the electric starter. Repeat this step a least one more time to make sure the inside of the engine is fully coated. Replace the plug and wipe the boat down with cleaner. It is also a good idea to open the radio box and unplug the AA battery holder from the switch harness. Leave the lid off the radio box over night to make sure any water that might have entered can evaporate.

Ordering Replacement Parts

To order replacement parts for the AquaCraft Alligator Tours Airboat, use the order numbers in the replacement parts list that follows. Replacement parts can be purchased from your local hobby shop or by mail order. If you need assistance locating a dealer to purchase parts, visit www.aquacraftmodels.com and click on "Where to buy". If you are missing parts, contact Hobbico Product Support at:

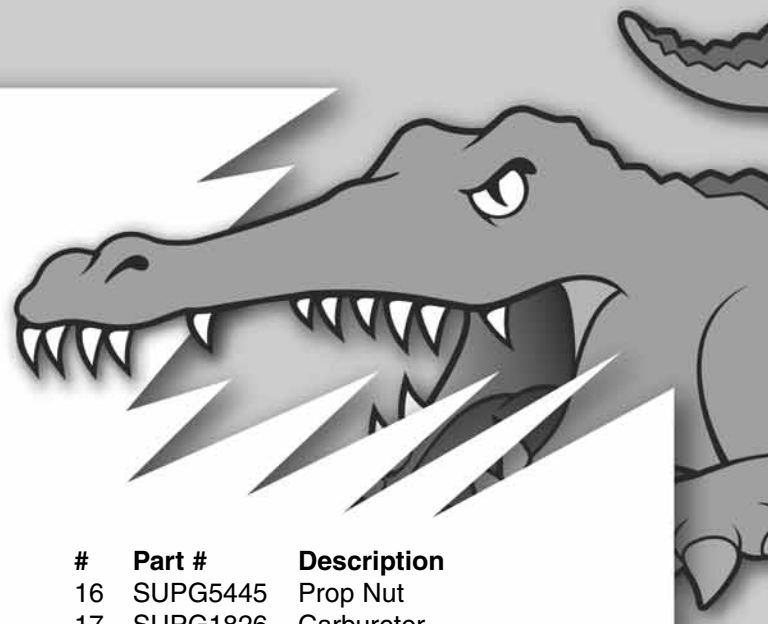
Phone: 217.398.8970

Fax: 217.398.7721

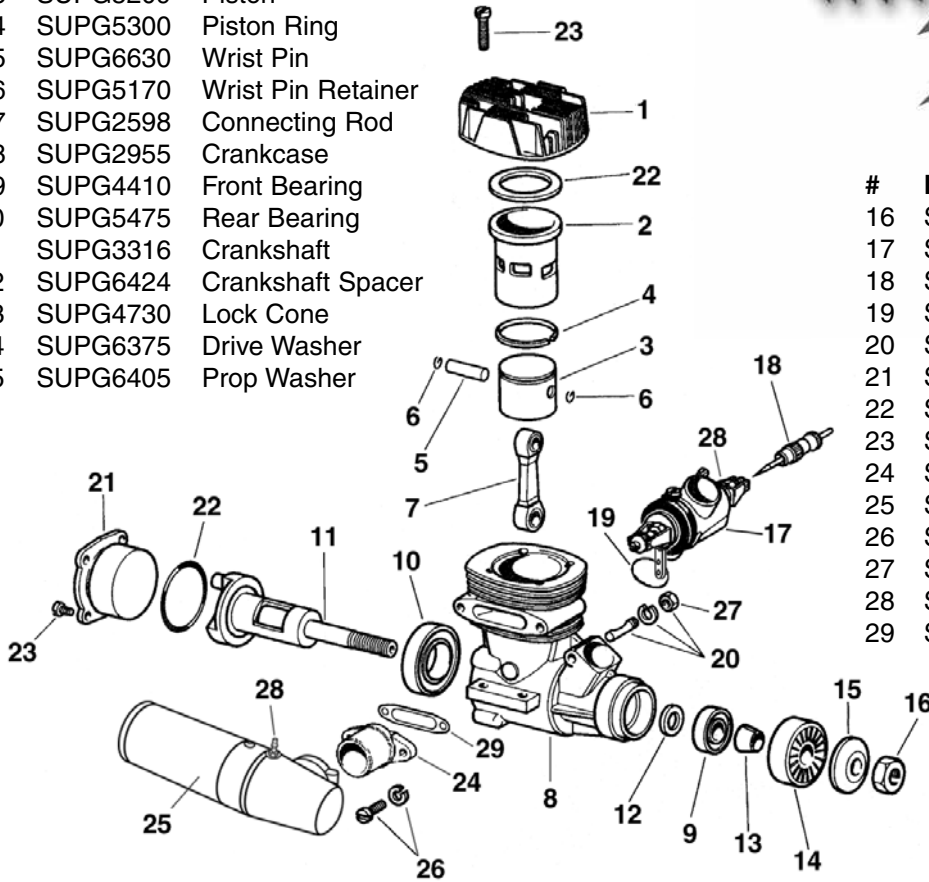
E-mail: boatsupport@greatplanes.com

Part Number	Description
AQUB8727	Rudders (2)
AQUB8728	Rudder Brackets
AQUB6275	Airboat Prop Cage
AQUB7751	Prop Hub G34
AQUB7804	Linkage Set
AQUB6909	Fuel Tank Mount
AQUB6276	Airboat Seats
AQUB6301	Decal Sheet
AQUB8607	Radio Box w/Lid
AQUB6500	Engine Mounts with Screws
AQUB9508	Flip Top Fuel Tank
SUPG0105	SuperTiger G34
AQUG6002	Exhaust Extension
APCQ0096	APC 9x6 Pusher Prop

SuperTigre G34 Engine



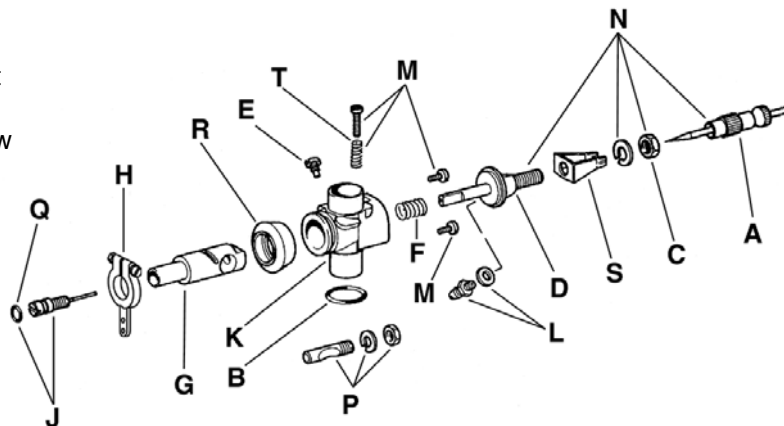
#	Part #	Description
1	SUPG3741	Cylinder Head
2	SUPG4196	Cylinder Liner
3	SUPG5209	Piston
4	SUPG5300	Piston Ring
5	SUPG6630	Wrist Pin
6	SUPG5170	Wrist Pin Retainer
7	SUPG2598	Connecting Rod
8	SUPG2955	Crankcase
9	SUPG4410	Front Bearing
10	SUPG5475	Rear Bearing
11	SUPG3316	Crankshaft
12	SUPG6424	Crankshaft Spacer
13	SUPG4730	Lock Cone
14	SUPG6375	Drive Washer
15	SUPG6405	Prop Washer



#	Part #	Description
16	SUPG5445	Prop Nut
17	SUPG1826	Carburetor
18	SUPG4866	High Speed Needle
19	SUPG5080	Carburetor Body O-Ring
20	SUPG2375	Carburetor Retainer
21	SUPG2085	Backplate
22	SUPG4485	Engine Gasket Set
23	SUPG5685	Engine Set Screw Set
24	SUPG1574	Exhaust Stack
25	SUPG1560	Silent Muffler/Stack
26	SUPG5806	Muffler Screw Set
27	SUPG2355	Carburetor Retainer Nut
28	SUPG4475	Fuel Nipple/Pressure Fitting
29	SUPG4660	Exhaust Stack Gasket (5)

Carburetor Parts List

#	Part#	Description
A	SUPG4866	Needle
B	SUPG5080	Carburetor Body O-Ring
C	SUPG2356	Needle Ratchet Spring Nut
D	SUPG5975	Spray Bar
E	SUPG2200	Throttle Barrel Guide Screw
F	SUPG2445	Throttle Barrel Spring
G	SUPG4203	Throttle Barrel
H	SUPG6060	Throttle Arm
J	SUPG4880	Idle Needle
K	SUPG6206	Carburetor Body
L	SUPG4475	Fuel Nipple
M	SUPG5695	Screw Set
N	SUPG4885	Needle Valve Assembly
P	SUPG2375	Carb Retainer
Q	SUPG5093	Idle Needle O-Ring
R	SUPG2025	Throttle Barrel Dust Shield
S	SUPG2456	Ratchet Spring
T	SUPG4717	Throttle Barrel Stop Screw Spring



Receiver NiCd Upgrade

These three items will be needed to upgrade your receiver battery to rechargeable NiCd's.



DuraTrax® 6V 1400mAh NiMH Receiver Hump Pack

DuraTrax technology makes this pack a great value for nitro boat modelers. The high discharge cells meet the increased power demands of today's digital servos — and 1400mAh of capacity means more run-time and less charging. Each pack includes a universal connector. **DTXM2011**



DuraTrax® AC Wall Charger

Designed for easy, convenient battery charging from a 120V household wall outlet, this compact unit offers 7.2V, 600mAh output and includes a female Futaba J plug. **DTXP4085**



Hobbico® Switch Harness with Charge Plug

For use with Futaba radios that have J-style connectors, this switch harness connects your receiver battery to the receiver through an on/off switch. It also enables you to charge the receiver battery without removing it from your model. Included are one switch harness with J connectors and a charge cord. **HCAM2400**

Accessories to Get You Running



Hobbico® TorqMaster™ LC 12V/7Ah Battery

Compare it to other field batteries on capacity, convenience or cost, and the TorqMaster LC looks like a clear winner. It comes out of the box ready for use and recharges overnight with an inexpensive AC Charger (HCAP0200). Sealed and maintenance-free, it never needs electrolyte and can be mounted at almost any angle. At just 5.9" x 3.75" x 2.5" (150 x 91 x 64 mm), it's an easy fit for almost any field box — and with a full 7Ah of current capacity, it's the ideal choice for supplying power to starters, chargers, fuel pumps, power panels and more. Weight: 5.25 lb (2.38 kg) **HCAP0800**



Hobbico® TorqMaster™ 90 Deluxe 12V Starter

The TorqMaster 90 Deluxe 12V starts engines up to .90 cu. in. and includes an aluminum starter cone with grooved silicone insert; soldered copper contacts; thick carbon brushes; easy press switch; 5' DC input cord; and factory-soldered battery clips. **HCAP3200**



Hobbico Super Hot-Shot™ 2 Glo-Starter

The Super Hot-Shot 2 combines a locking glow plug clip for standard or 4-stroke plugs with a high-capacity Sanyo® rechargeable NiCd. It delivers 4000mA -- enough for an entire day of modeling. Features include a Twist-and-Lock Connector and heavy-duty wall outlet adapter with LED indicator for recharging. **HCAP2520**



Hobbico After Run Engine Oil

After each time you run your engine, just take a few seconds to put After-Run Engine Oil into its carburetor -- that's a quick, easy way to prevent varnish or gum build-up, and to protect bearings and internal parts from rust and corrosion. After-Run Engine Oil works wonders to keep 2- and 4-stroke engines performing in peak condition. Available in a handy, 2-ounce bottle. **HCAP3000**

DuraTrax® Kwik-Pit™ 500cc Fuel Bottle

The 5" long, angled, anodized aluminum neck of the Kwik-Pit Fuel Bottle reaches easily into your tank to prevent fuel spills. The clear plastic body — marked with capacity measuring lines in 10 cc increments — keeps you aware of fuel levels. At 500 cc (17.6 oz.) capacity, it holds more than enough glow fuel to top off your tank. A black rubber tip cap prevents spills during transport. **DTXP0150**



AquaCraft™ Hammer EP RTR

Sure, there are several clever methods for retrieving stalled boats. But the Hammer EP turns the task into another way to enjoy R/C water fun...driving the hottest little electric deep vee ever to cut through the current! Batteries are all you need to buy and install. Everything else is already covered: assembly, finishing, a display stand and more. On-board gear for the AquaCraft 2-channel radio is in place, as is a water-cooled 550 motor and ESC with reverse. This 24" long (610mm) model is a blast for all skill levels and available in six exciting colors. Requires a 6- or 7-cell battery, charger and 8 "AA" cells. **AQUB10****



www.aquacraftmodels.com